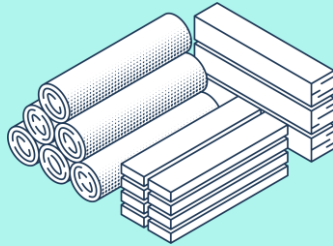


Growing a sustainable future

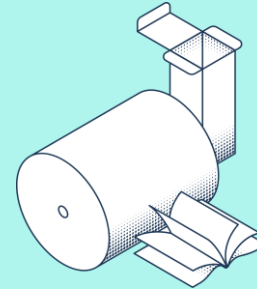




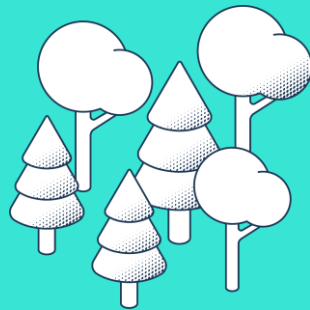
Wood products
1.5 Mm³



Packaging,
books & magazines
1.5 Mton



Harvest in own forests
2.8 Mm³



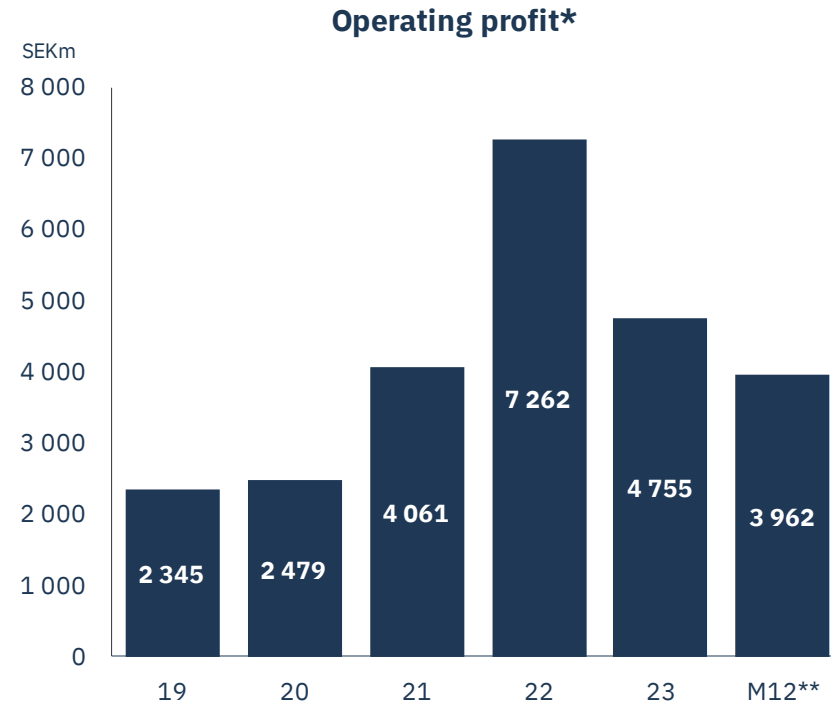
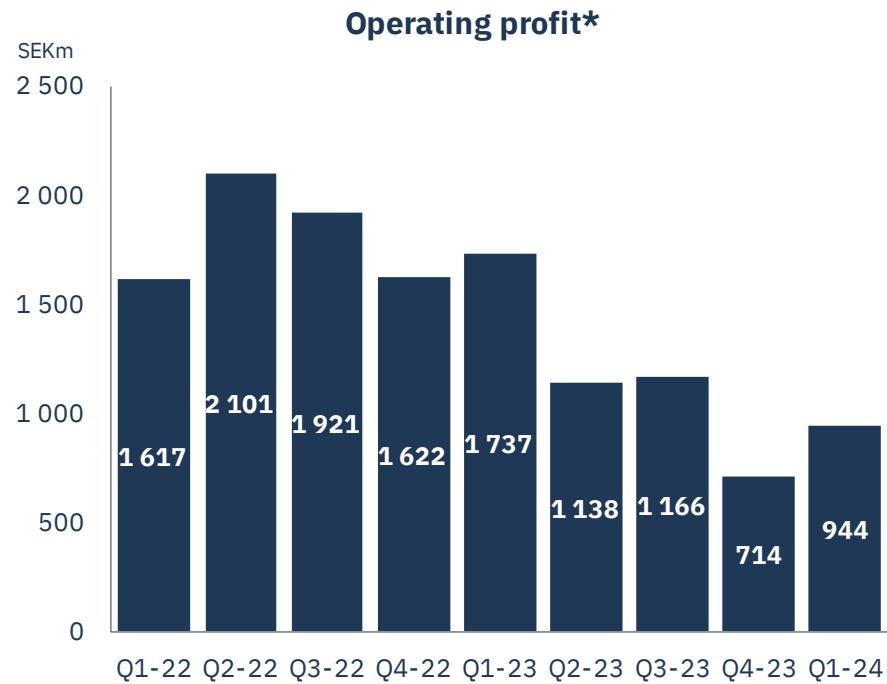
Hydro and wind power
1.8 TWh



1.3 million ha total land area

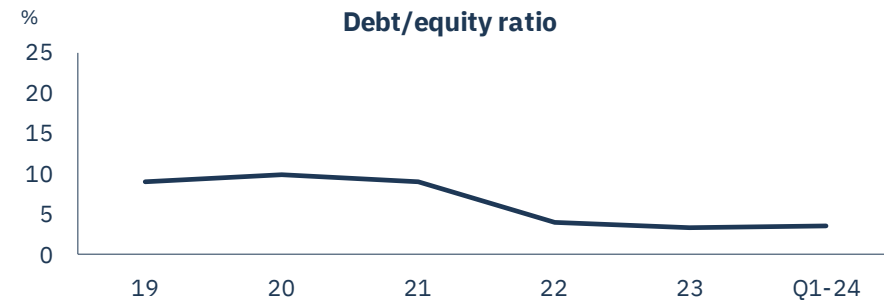
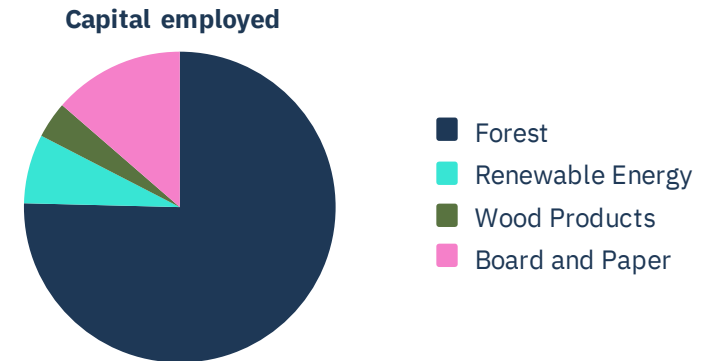
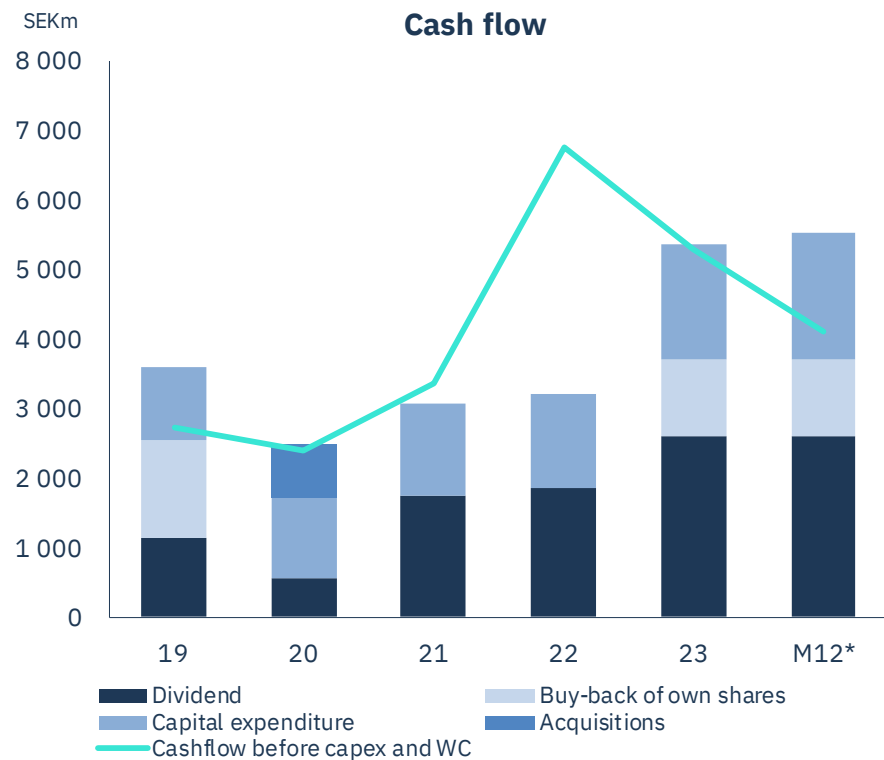
Solid earnings despite slow cycle

Good contribution from forest, hydro power & paper

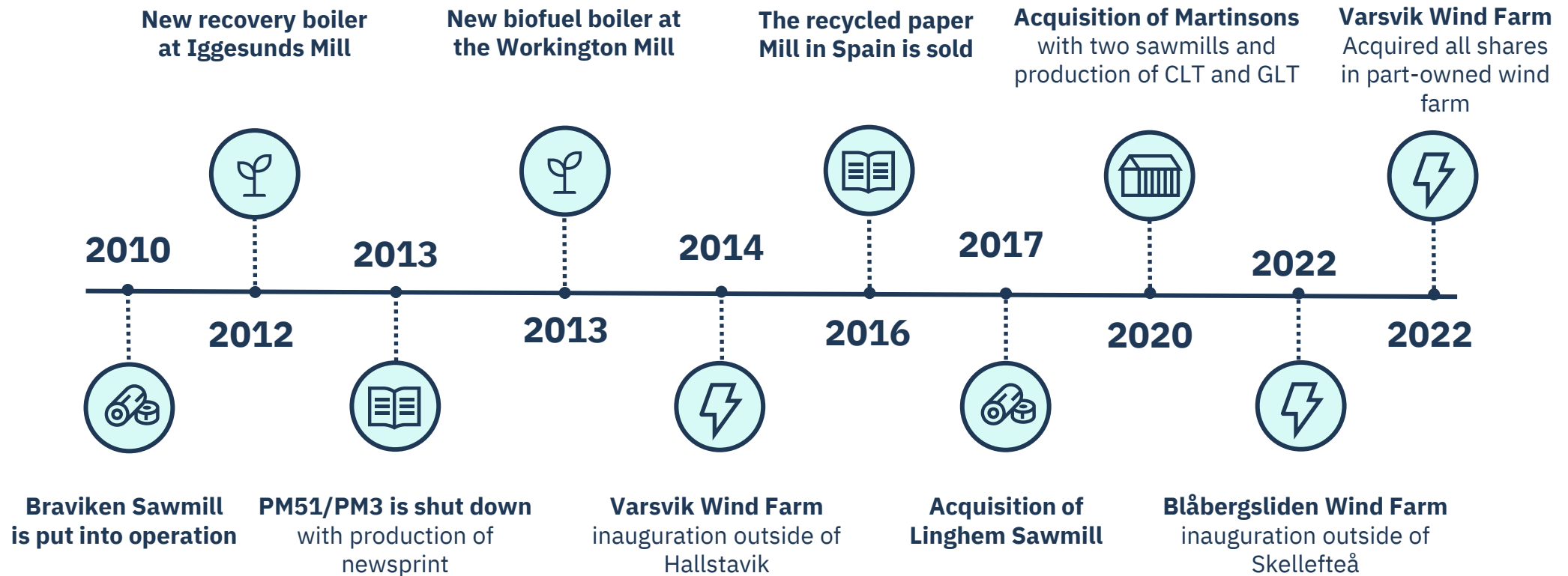


Net debt at SEK 2 bn vs Equity of SEK 57 bn

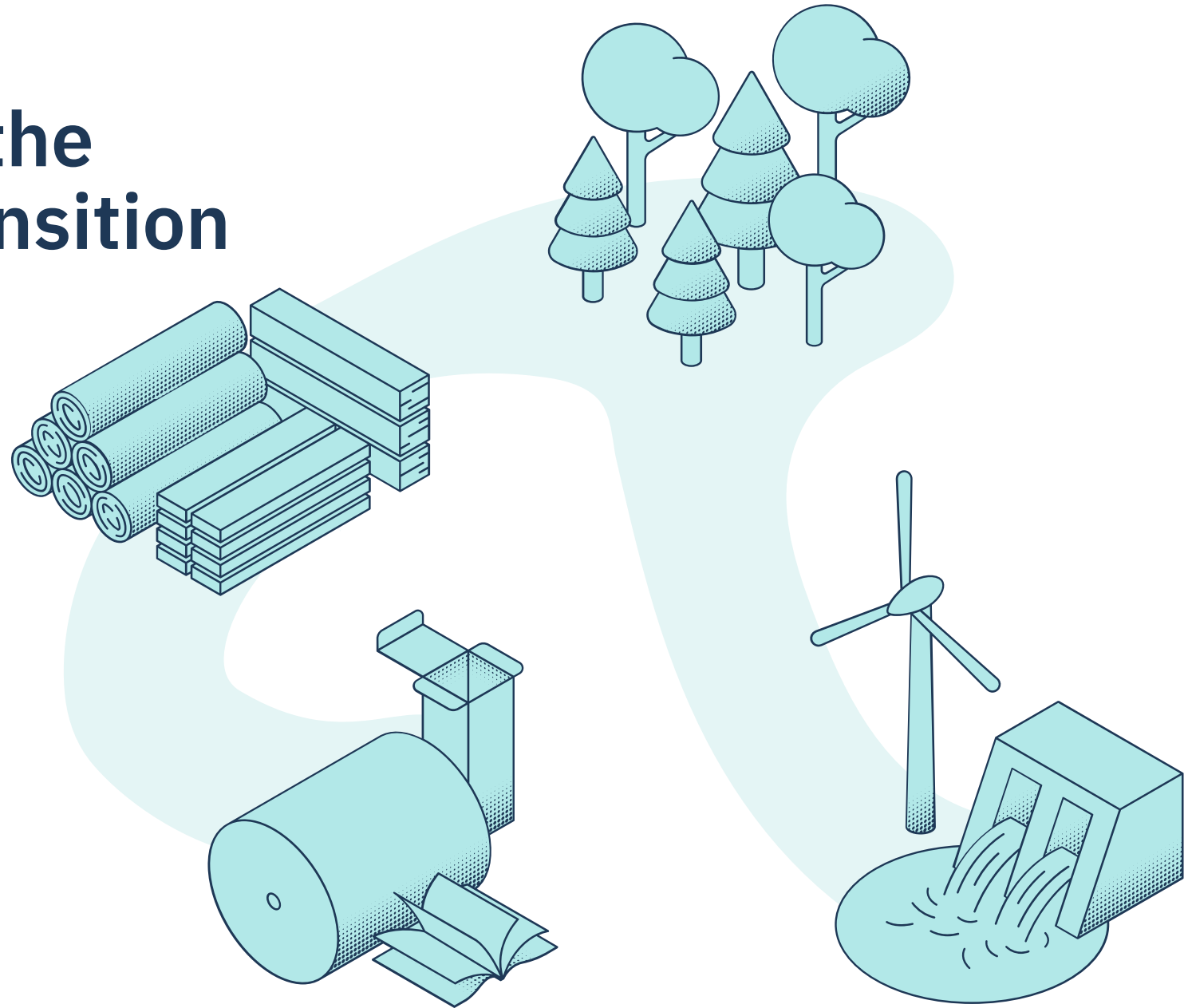
Excess cash flow returned to shareholders over time



Expanding wood products and wind power

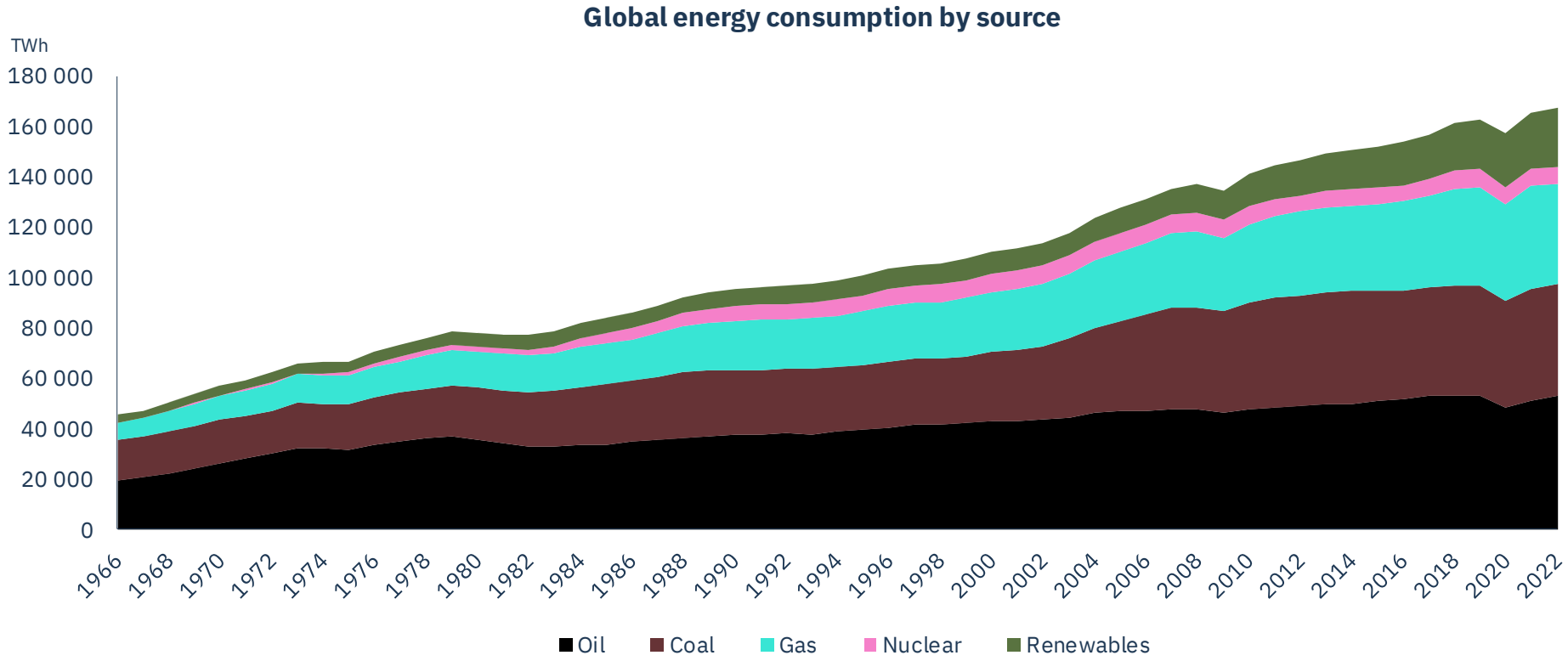


A bet on the green transition



The world is still a fossil junkie

Fossil energy has quadrupled last 50 years



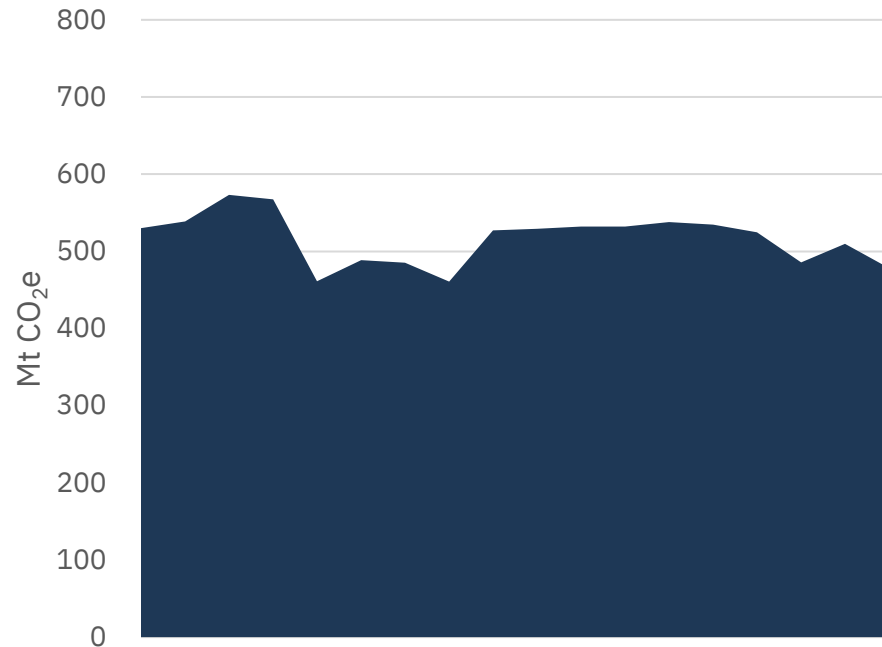
EU has high ambitions for climate & ecosystems



European industry has not decarbonised

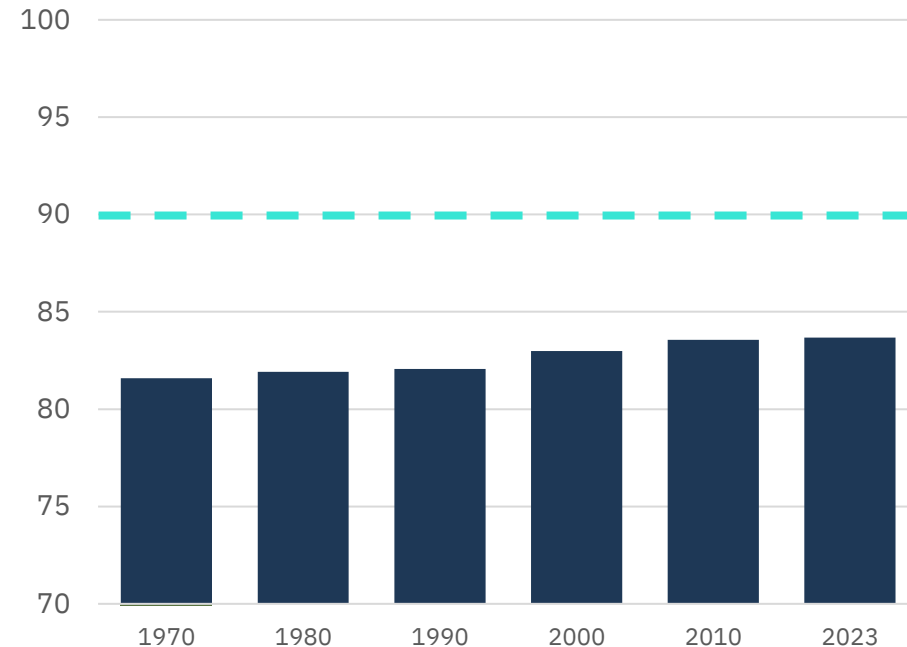
Biodiversity is under pressure

European industrial emissions
(excl. combustion) 2005–2022



Source: European Environment Agency

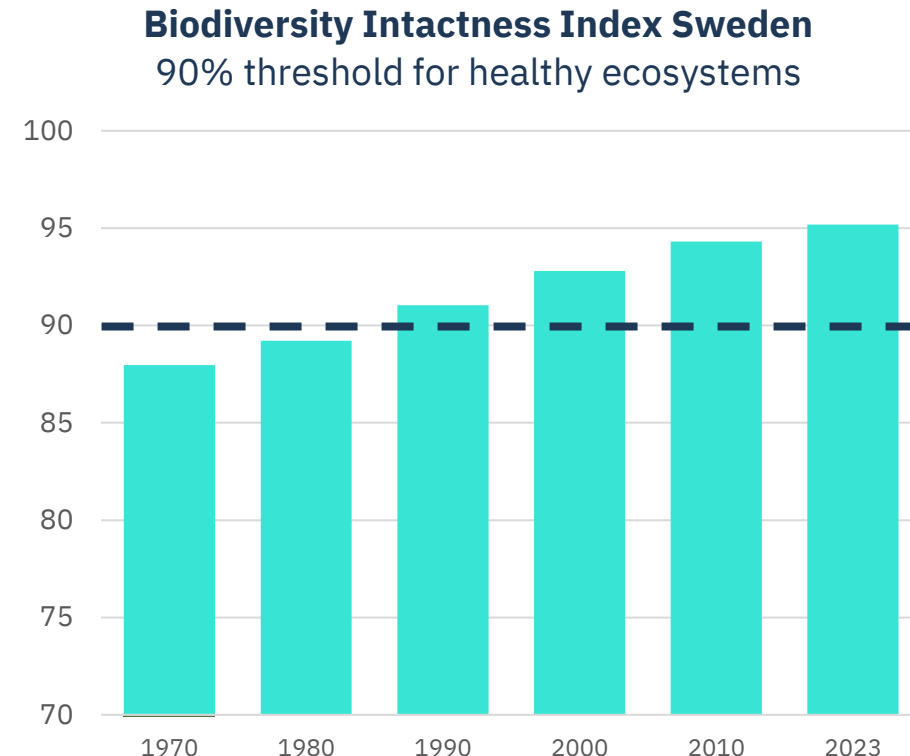
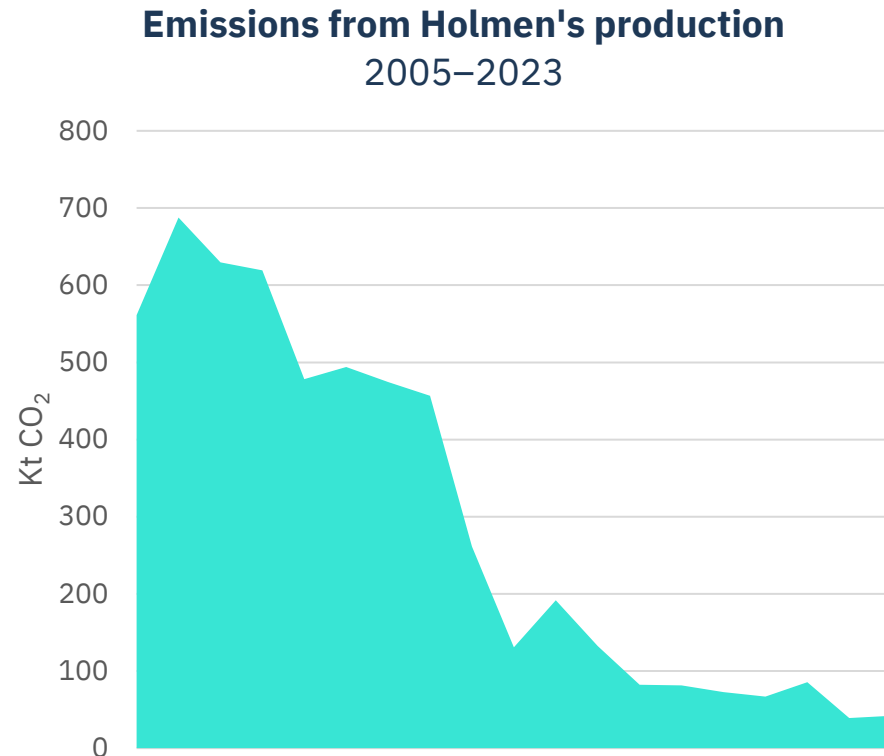
Biodiversity Intactness Index Europe
90% threshold for healthy ecosystems



Source: [Natural History Museum](#)

We have lowered our fossil emissions by 90%

Swedish ecosystems are in balance

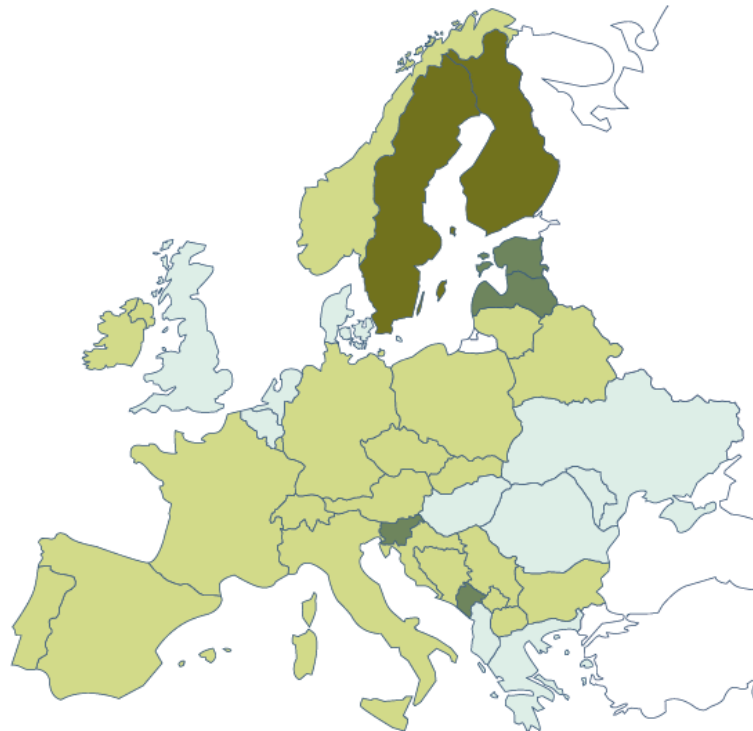


Source: [Natural History Museum](#)

Access to wood & fossil-free energy

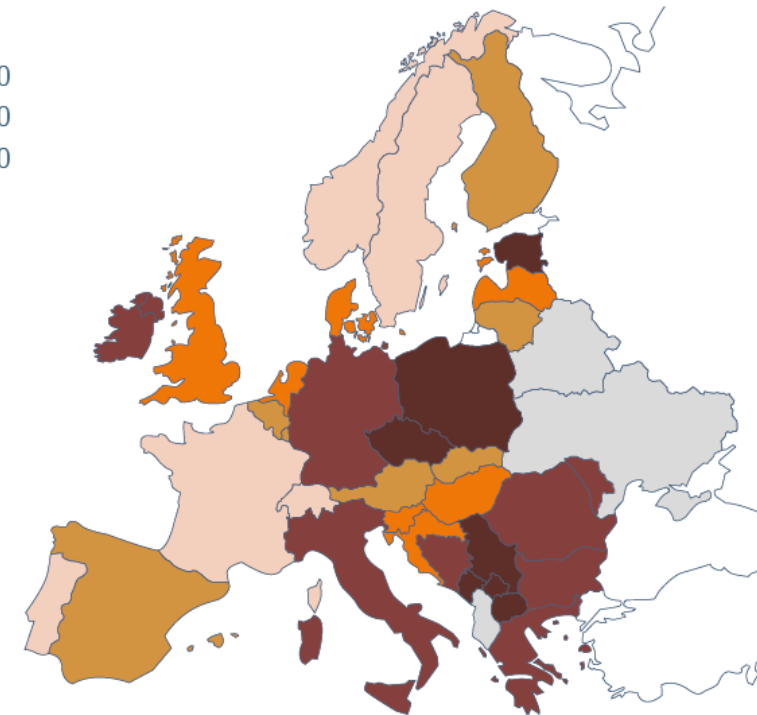
Forrest assets*

- >65
- 51-65
- 31-50
- 11-30



Carbon intensity from electricity production**

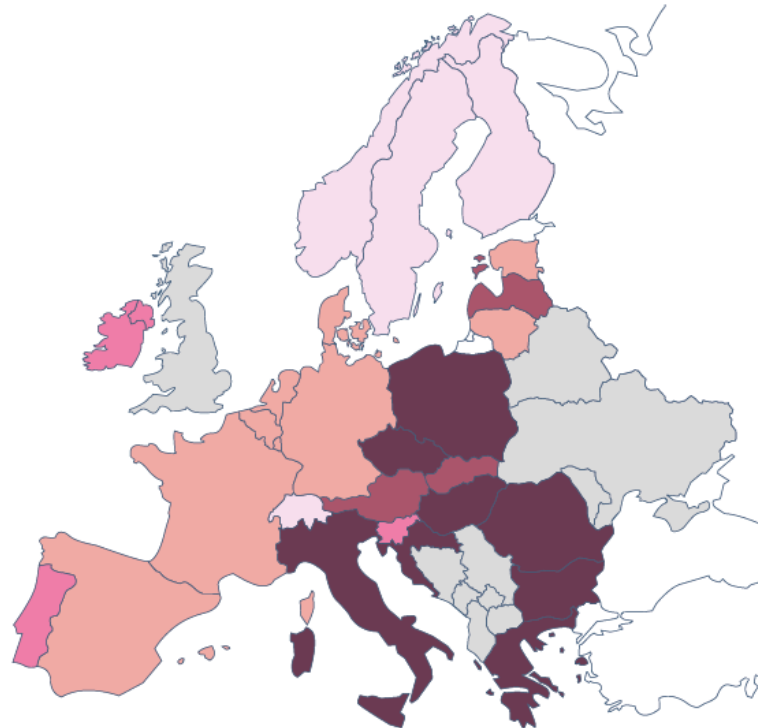
- <100
- 101-200
- 201-300
- 301-500
- >500
- No data



Clean air and plenty of water in the Nordics

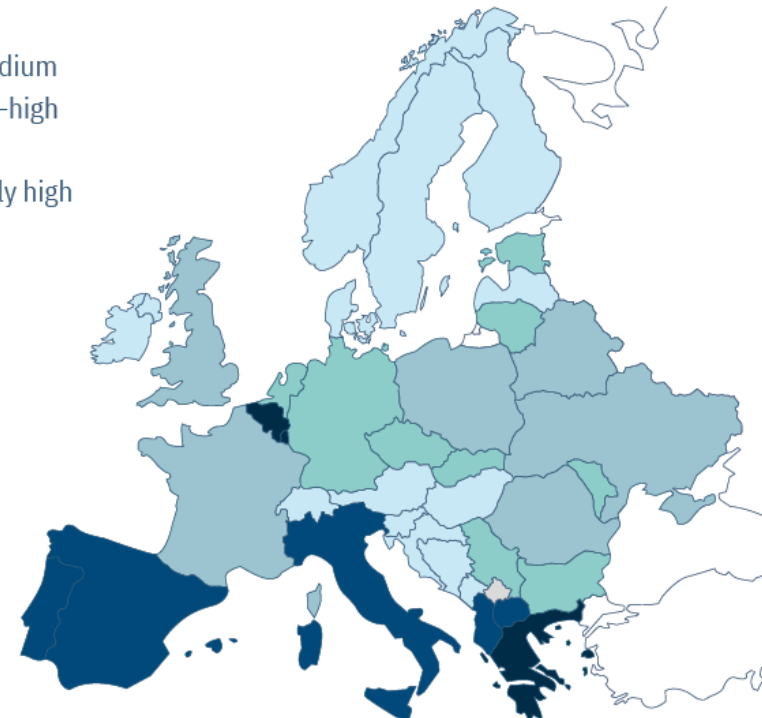
Air pollution*

- <8
- 8–9
- 10–11
- 12–14
- >14
- No data

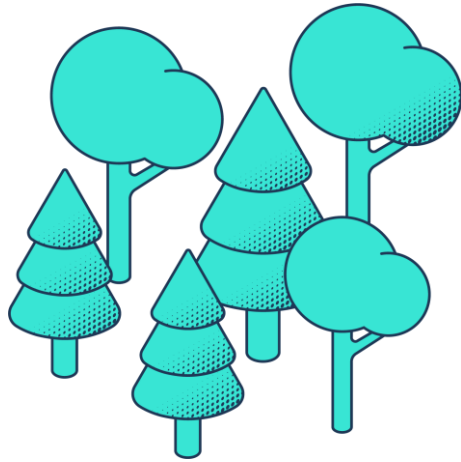


Water stress**

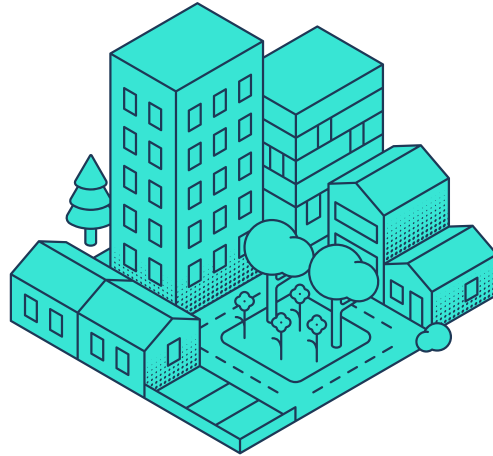
- Low
- Low–medium
- Medium–high
- High
- Extremely high
- No data



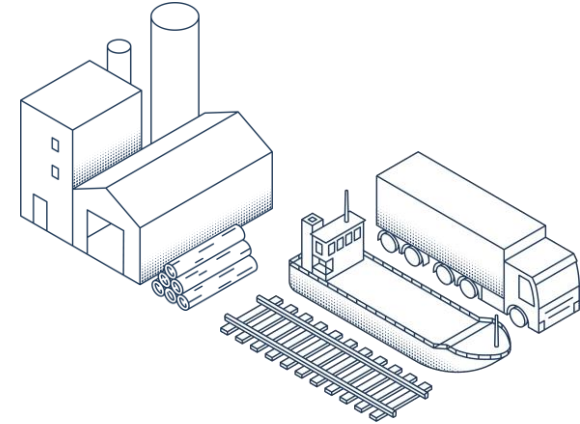
We're beyond net zero



1.6 Mt CO₂
Net increase in growing forest



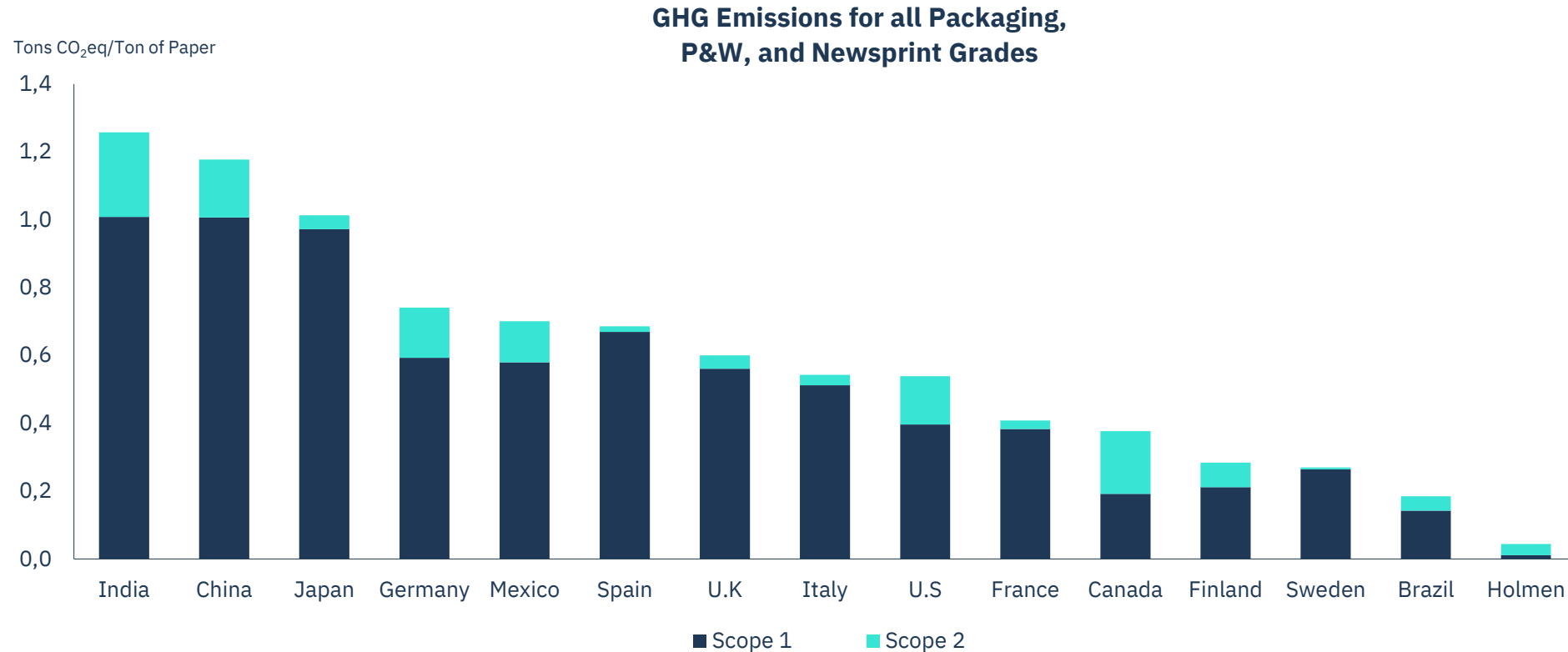
0.5 Mt CO₂
Net storage in buildings



-0.1 Mt CO₂e Scope 1+2
-0.6 Mt CO₂e Scope 3

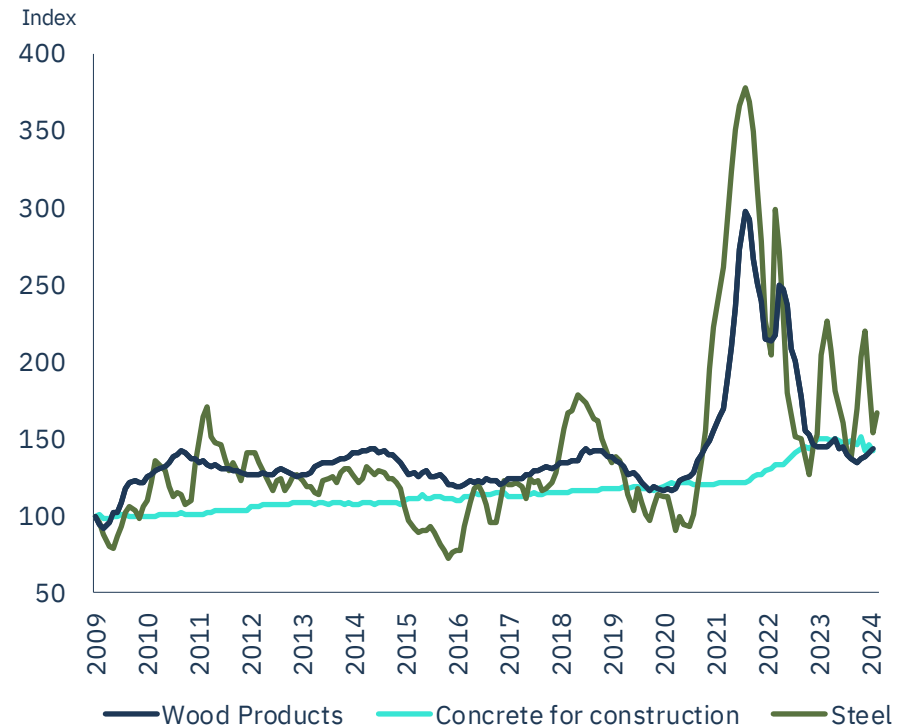
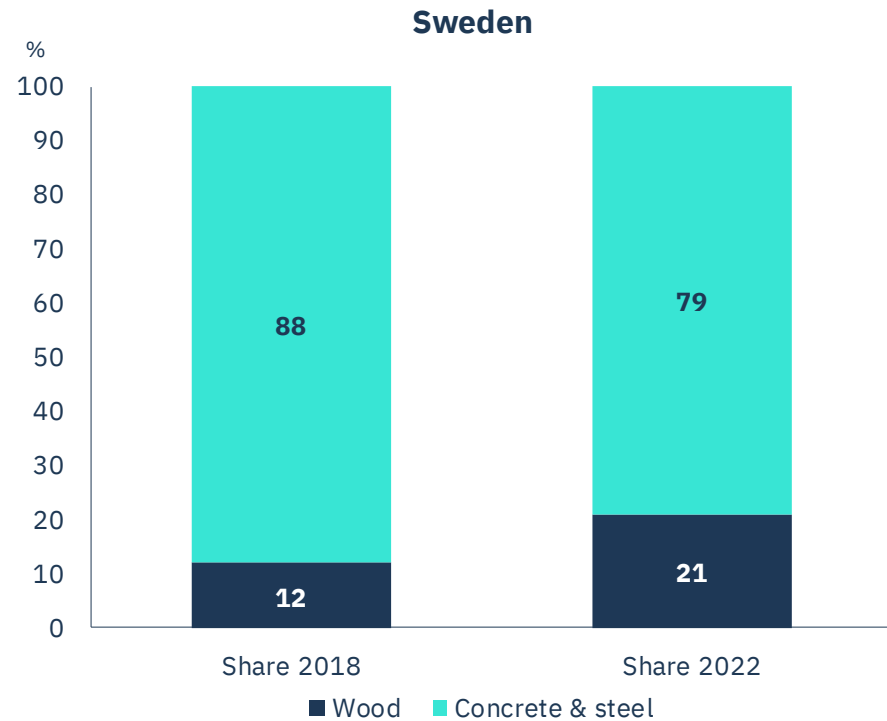
Helping our customers with their CO2 footprint

Consumer board, transport packaging, books & magazines



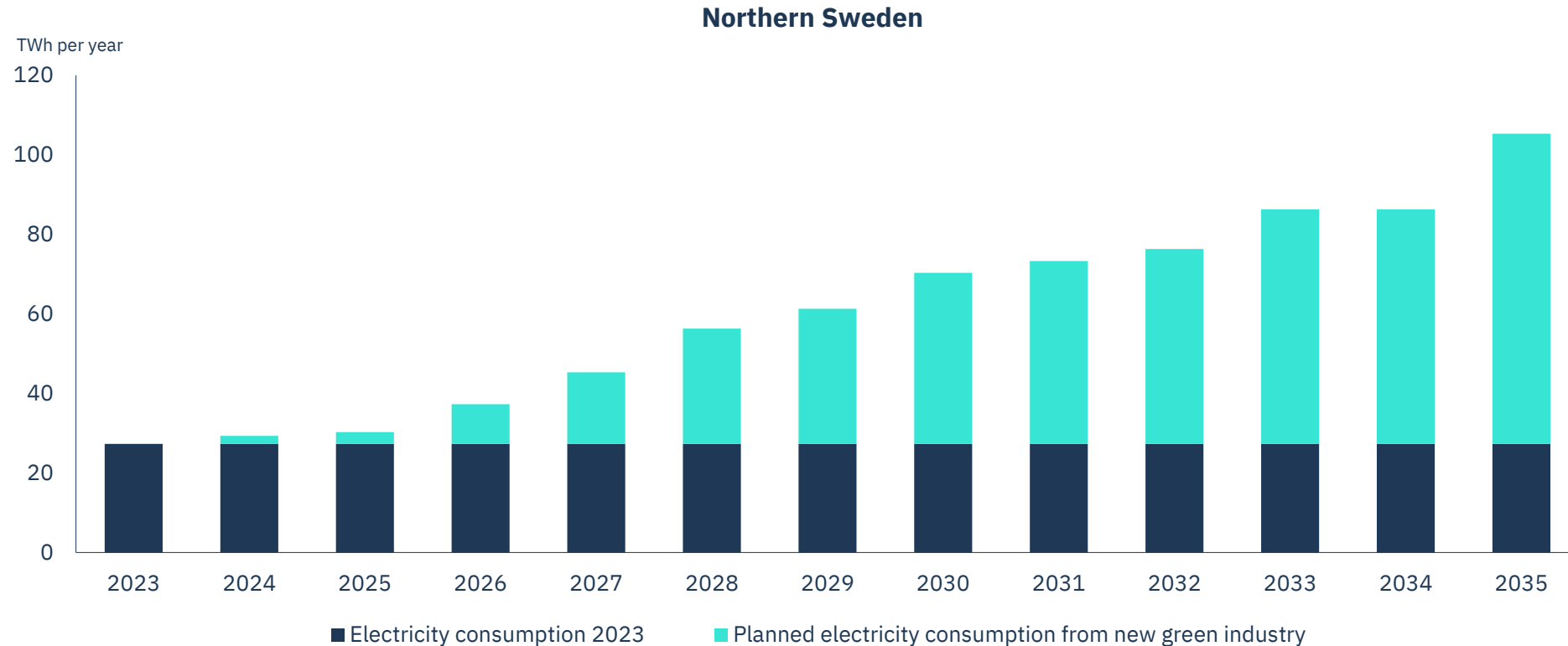
Offer a green alternative to concrete & steel

CBAM will push up the cost for building materials



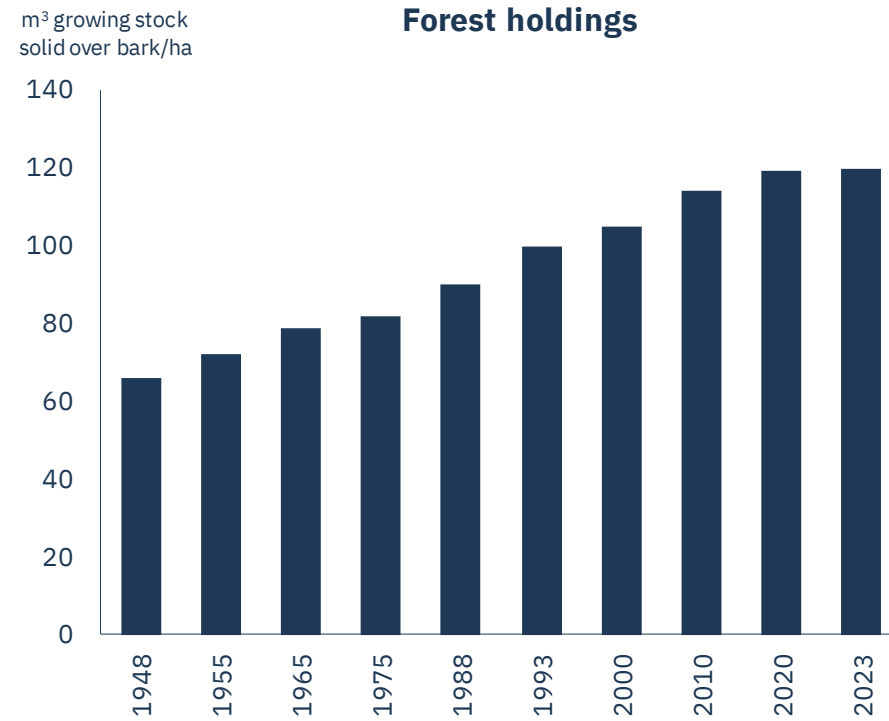
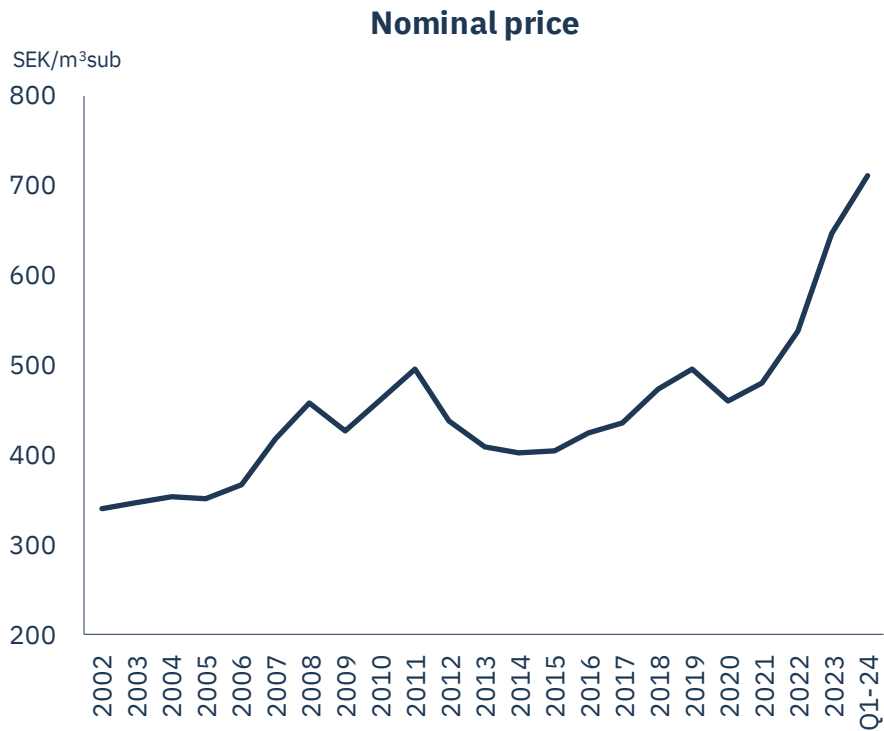
Supporting the emerging green industry

Blisterliden will grow our renewable production another 20%



Forests becoming more of a scarce resource

Supporting value and industrial operations



HOLMEN

holmen.com