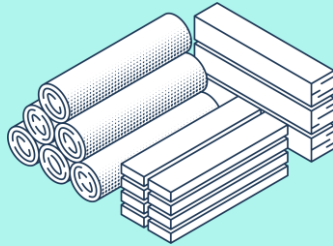


Growing a sustainable future

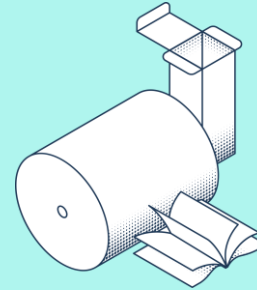




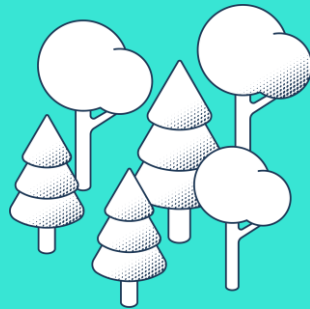
Wood products
1.5 Mm³



Packaging,
books & magazines
1.5 Mton



Harvest in own forests
2.8 Mm³

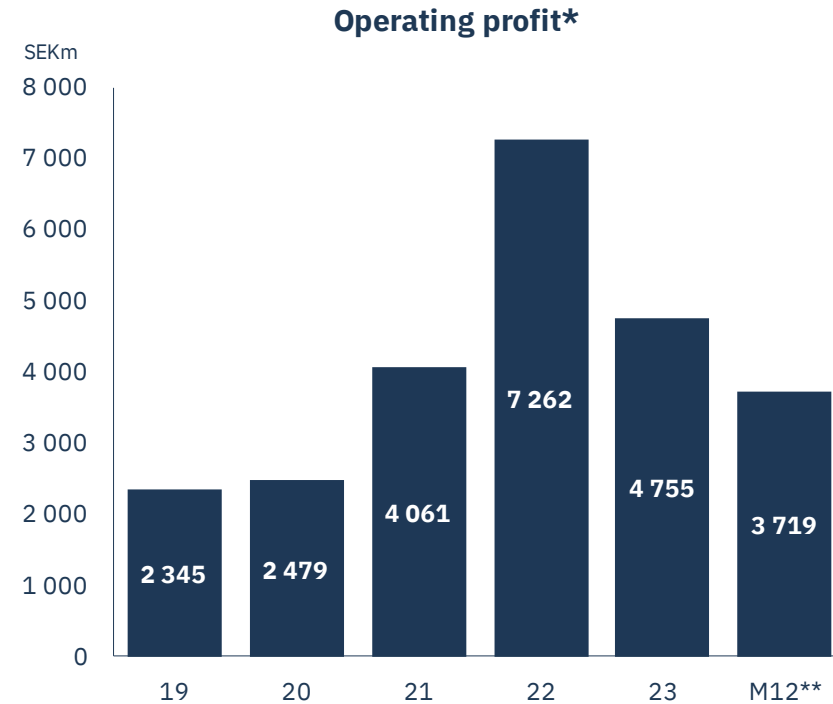
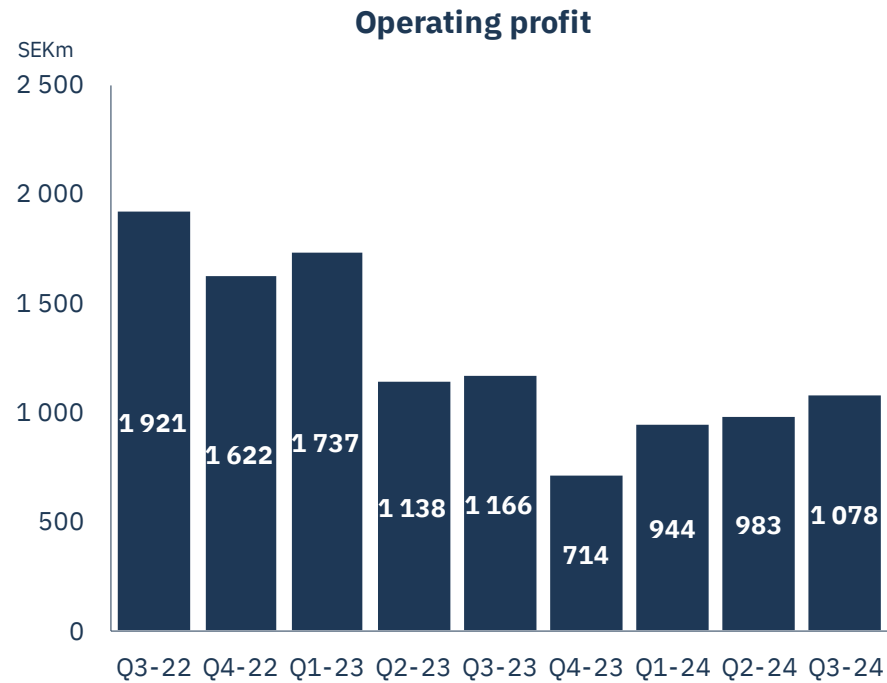


Hydro and wind power
1.8 TWh



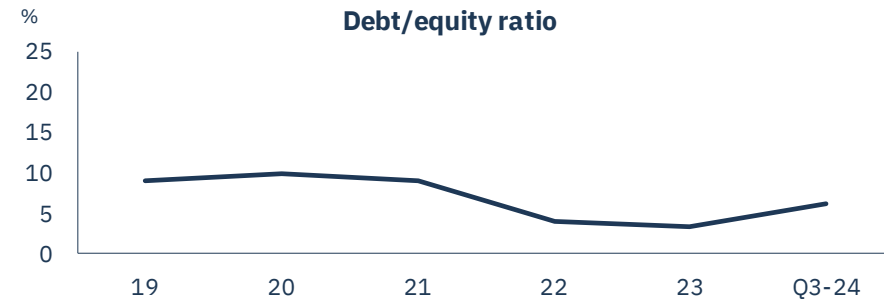
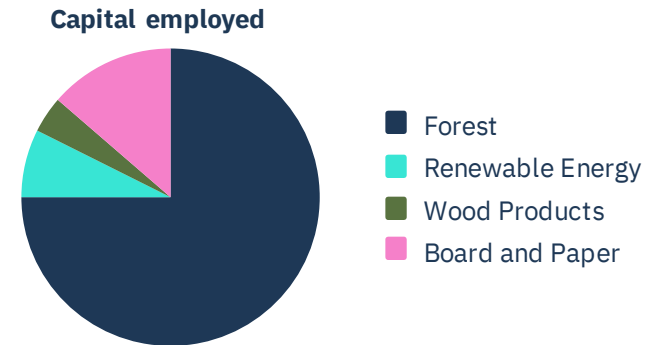
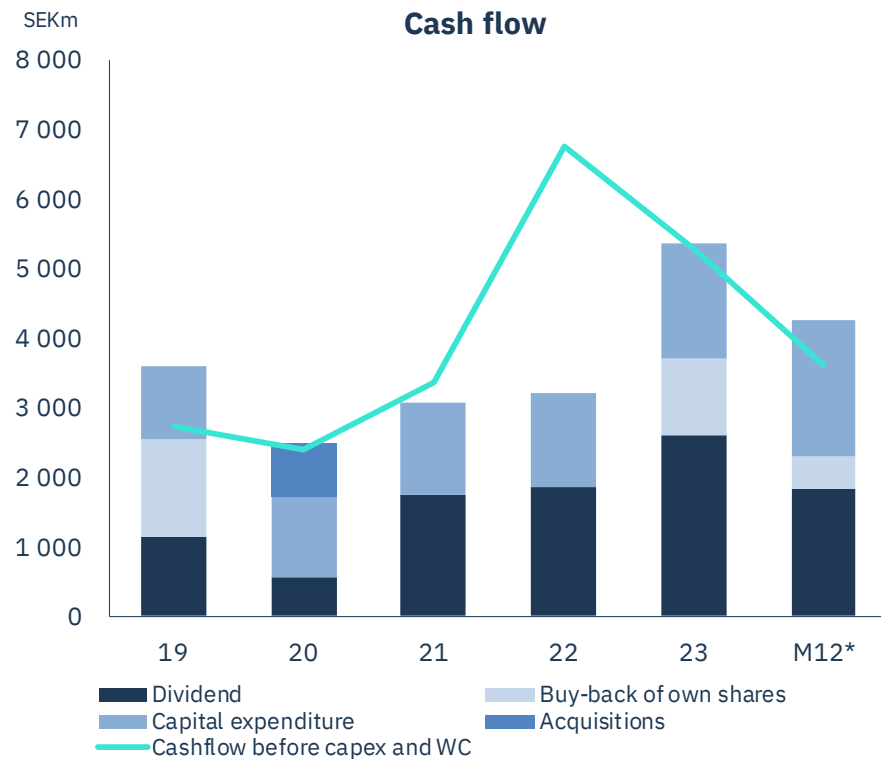
1.3 million ha total land area

Solid earnings despite slow cycle

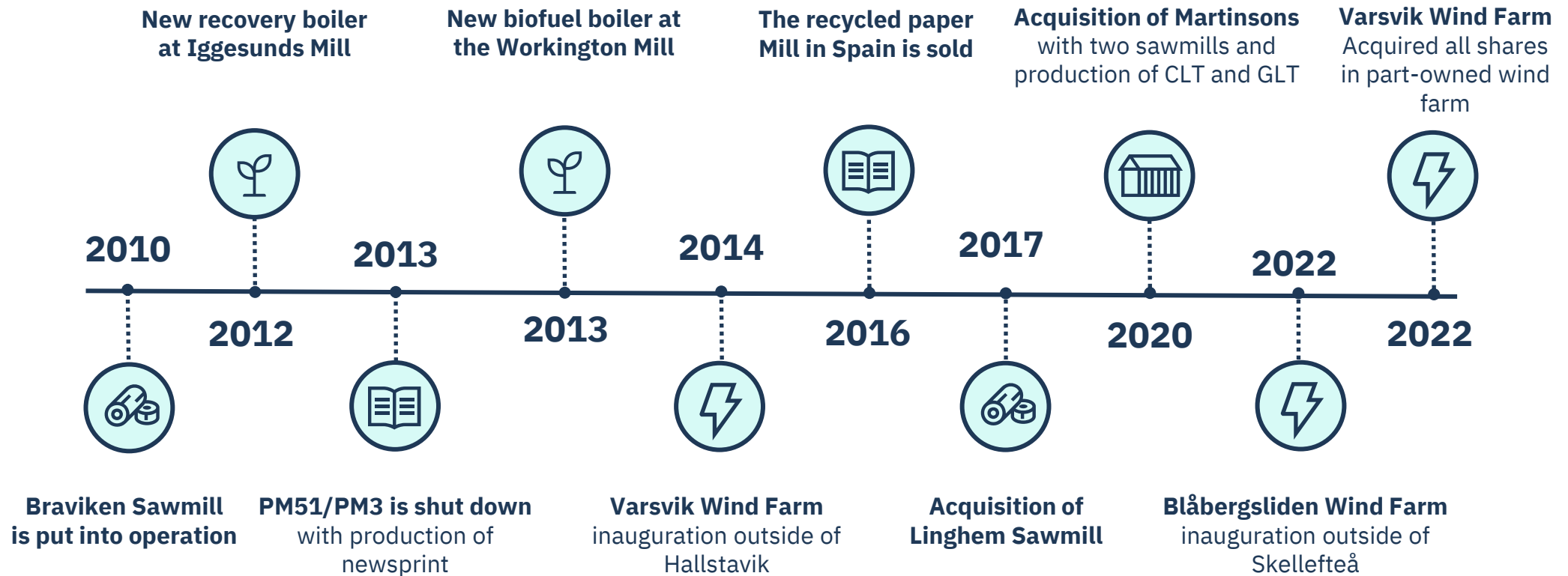


Dividends & buy-backs of SEK 6 bn 2023-2024

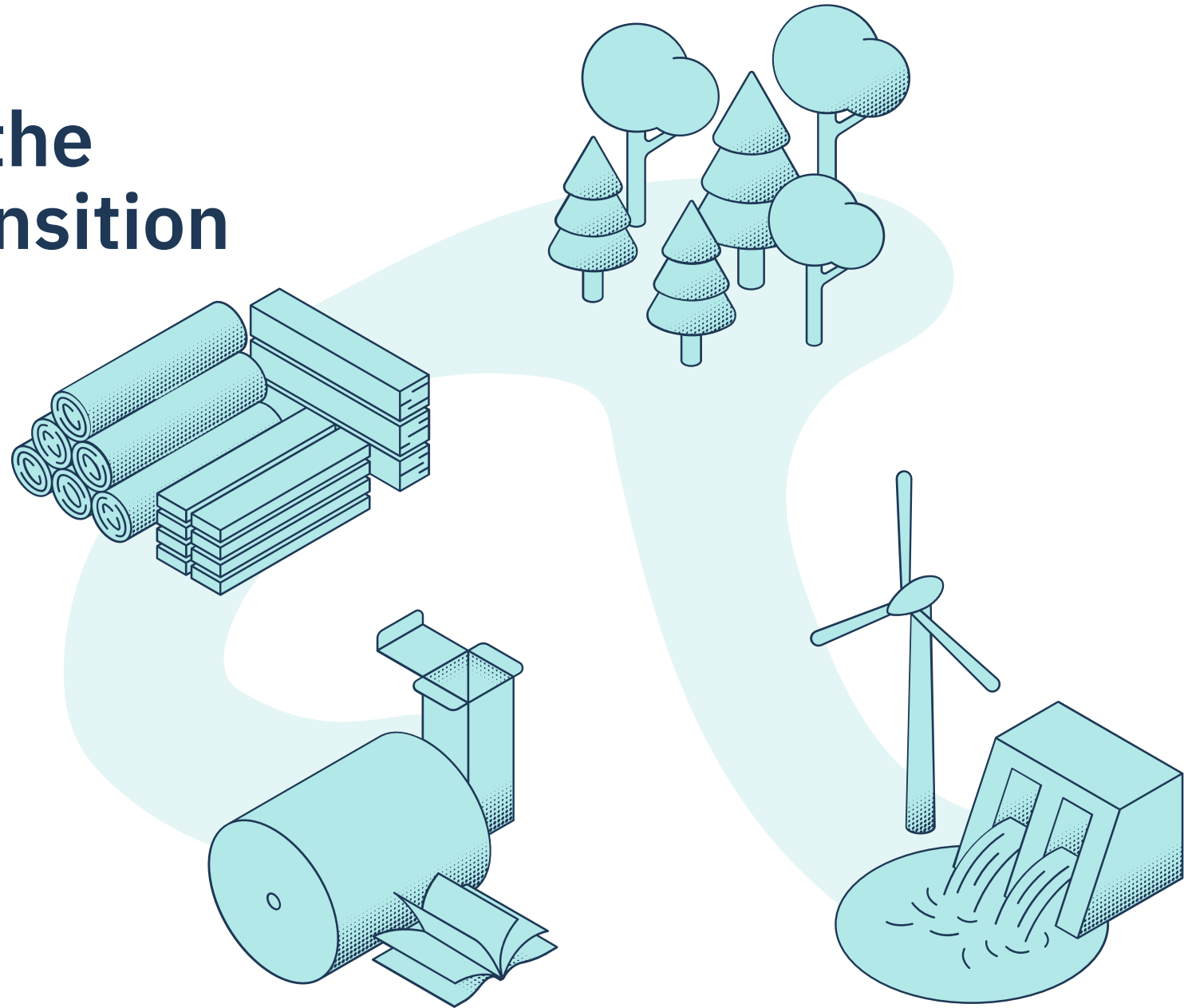
Net debt at 6% of equity



Expanding wood products and wind power

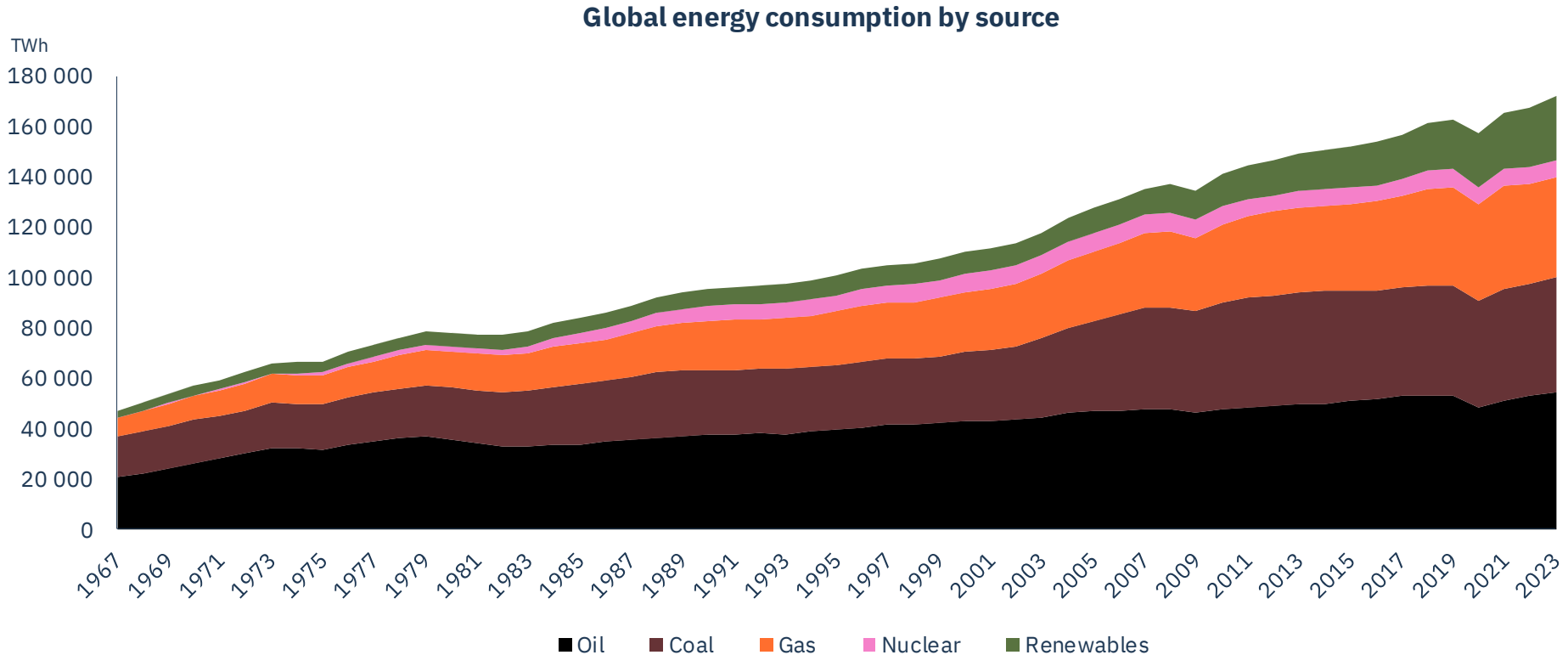


A bet on the green transition



The world is fossil fueled

Fossil energy has quadrupled last 50 years

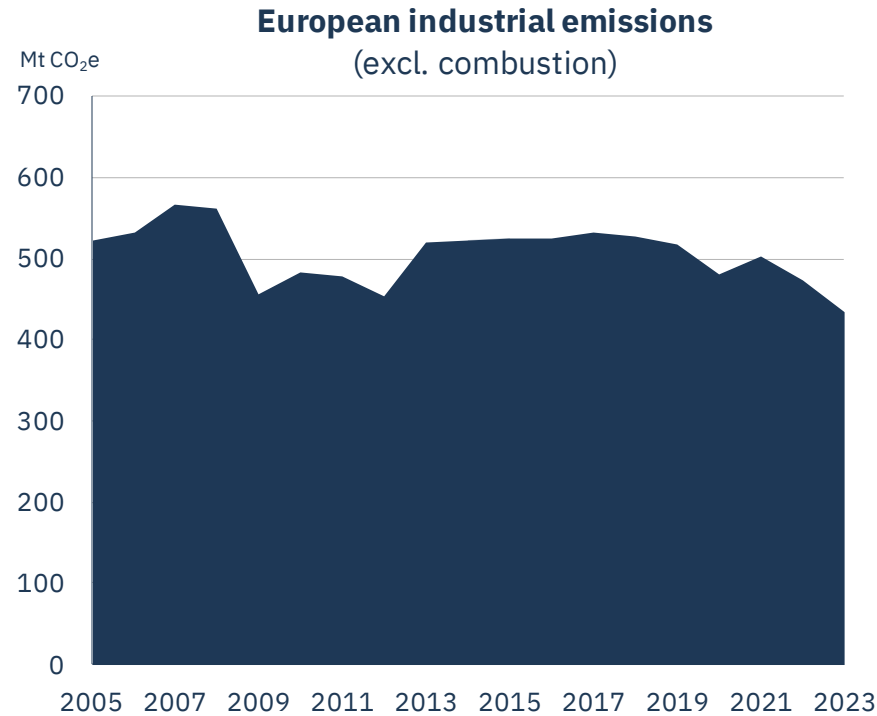


EU has high ambitions for climate & ecosystems

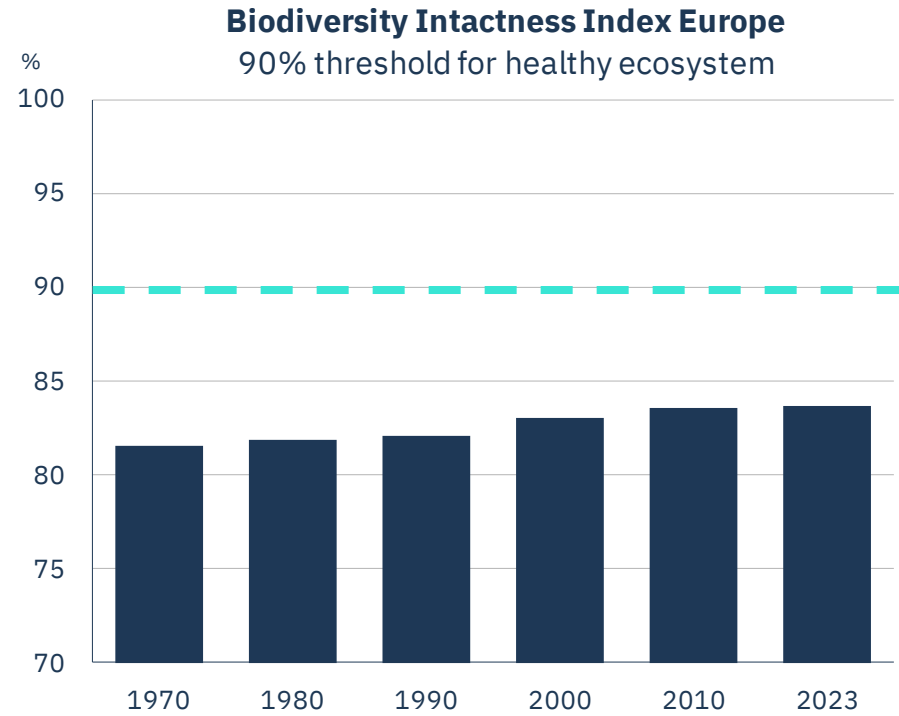


European industry has not decarbonised

Biodiversity is under pressure



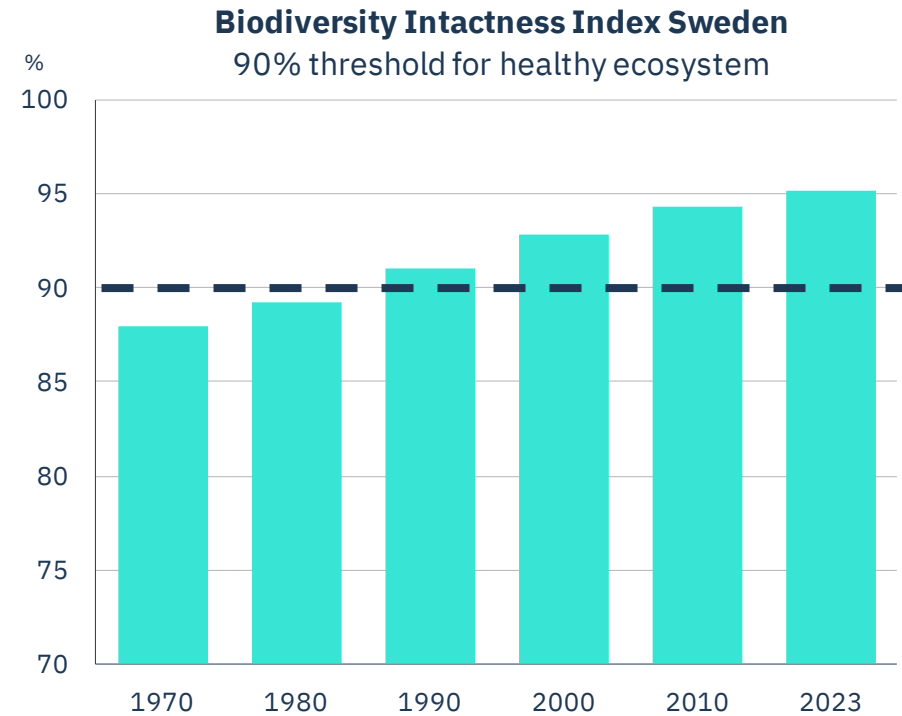
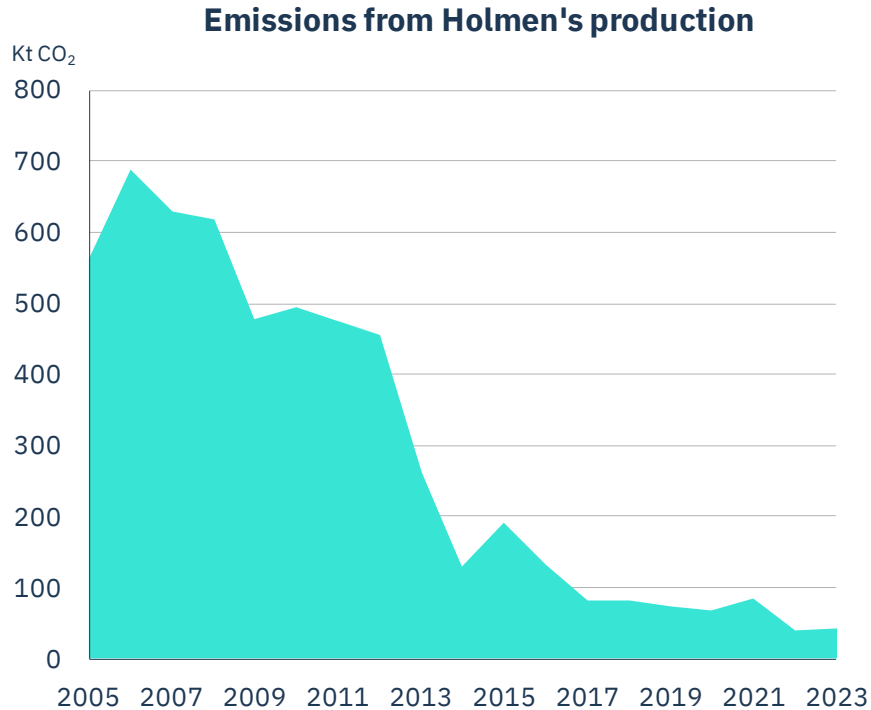
Source: European Environment Agency



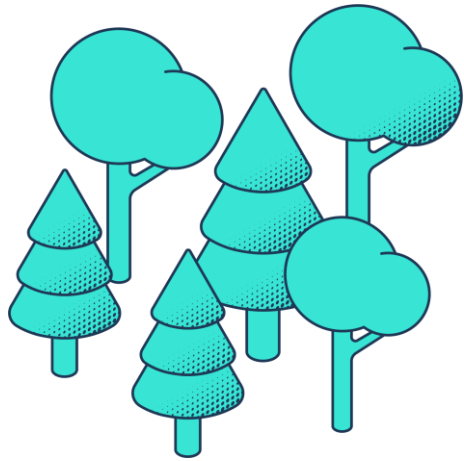
Source: [Natural History Museum](#)

We have lowered our fossil emissions by 90%

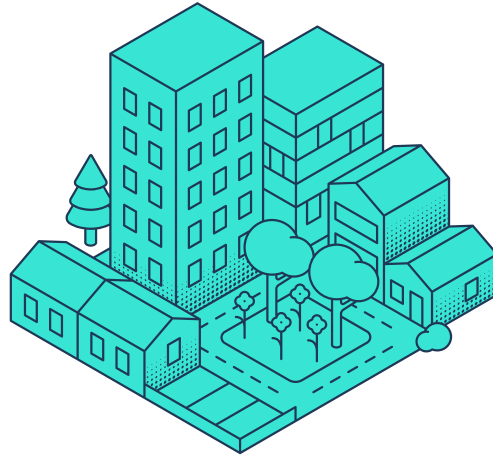
Swedish ecosystems are in balance



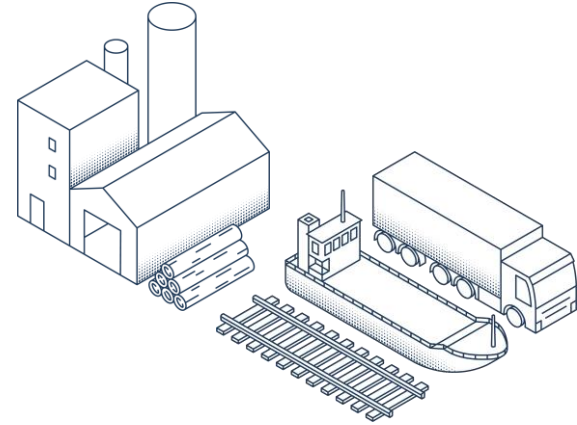
We're beyond net zero



1.6 Mt CO₂
Net increase in growing forest



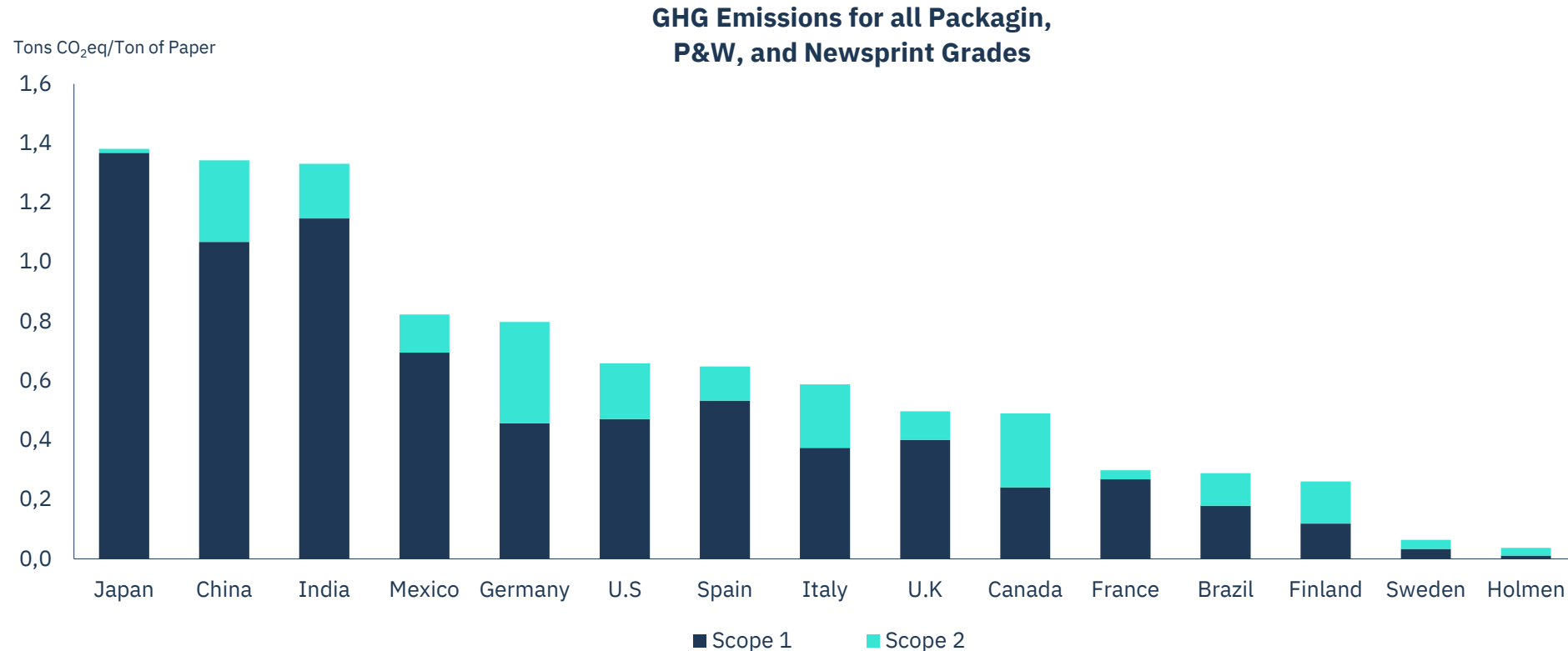
0.5 Mt CO₂
Net storage in buildings



-0.1 Mt CO₂e Scope 1+2
-0.6 Mt CO₂e Scope 3

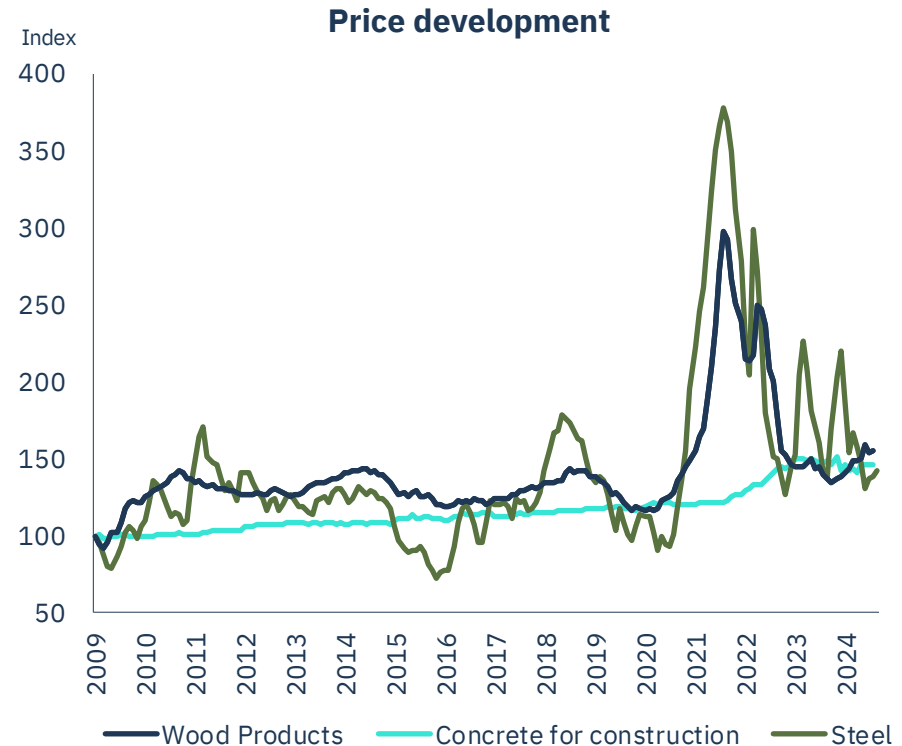
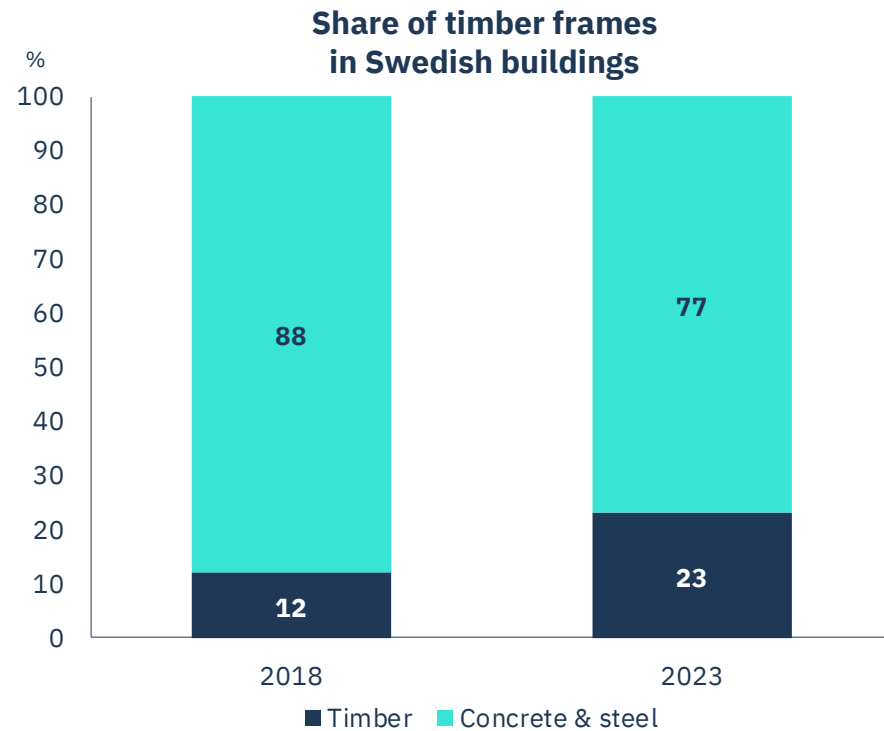
Helping our customers with their CO2 footprint

Consumer board, transport packaging, books & magazines

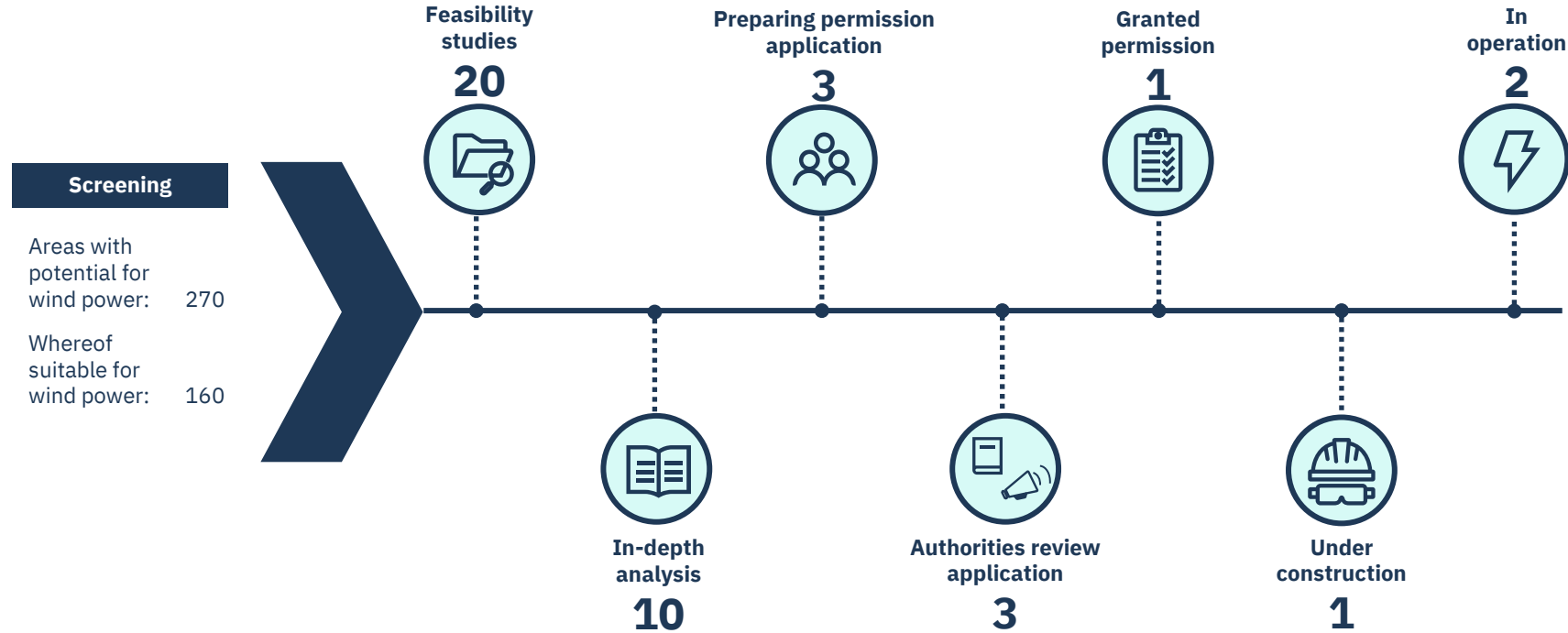


Offer a green alternative to concrete & steel

CBAM will push up the cost for building materials

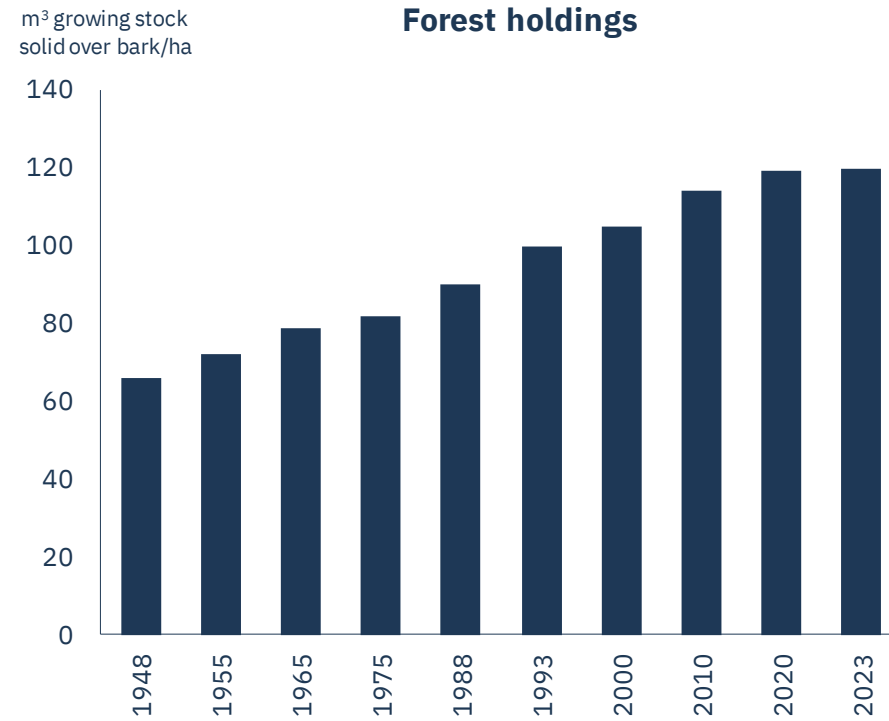
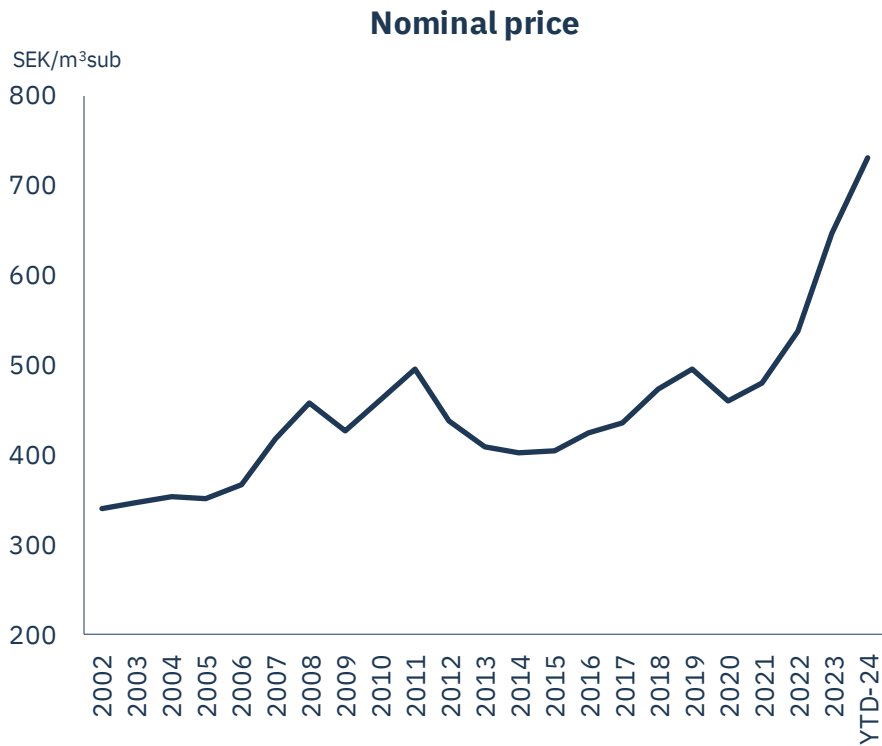


Developing a wind farm portfolio



Forests becoming more of a scarce resource

Supporting value and industrial operations



HOLMEN

holmen.com