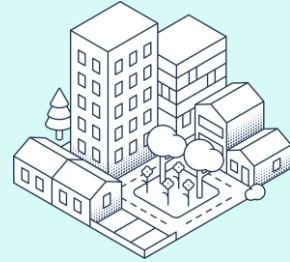
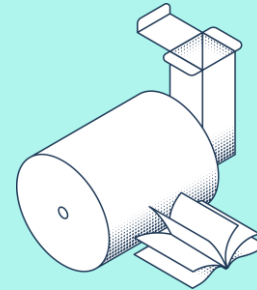
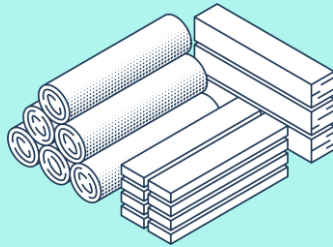


Growing a sustainable future



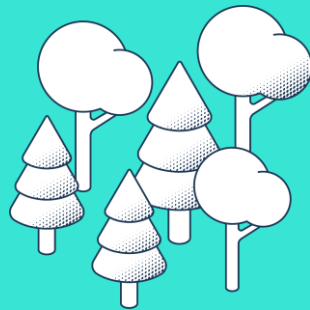


Wood products
1.5 Mm³



Packaging,
books & magazines
1.5 Mton

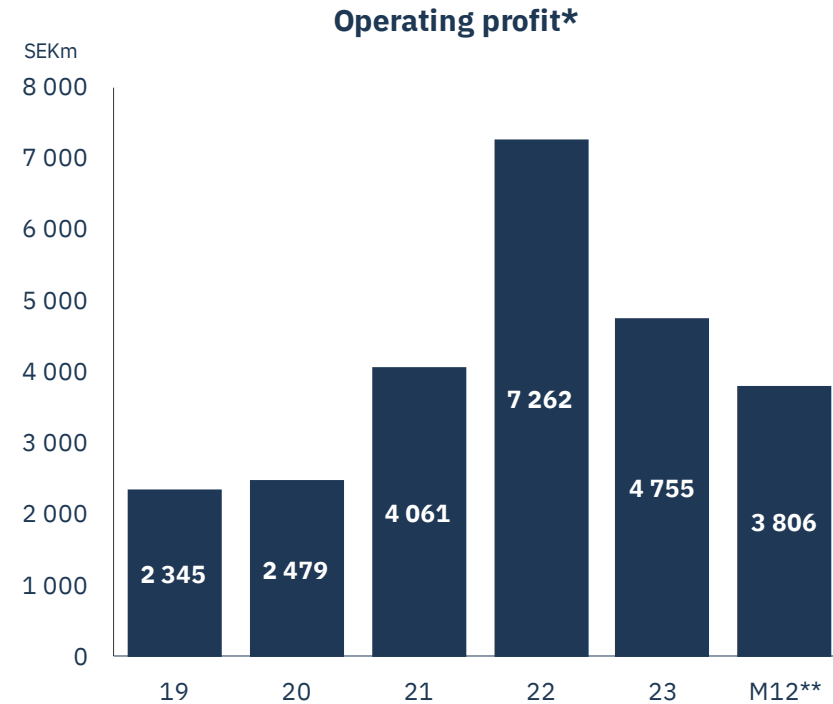
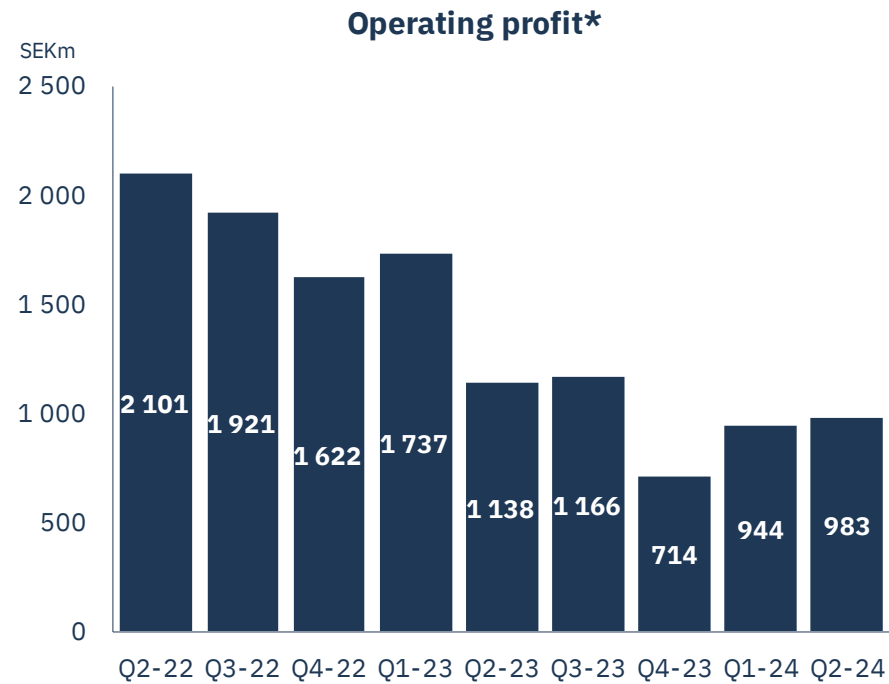
Harvest in own forests
2.8 Mm³



Hydro and wind power
1.8 TWh

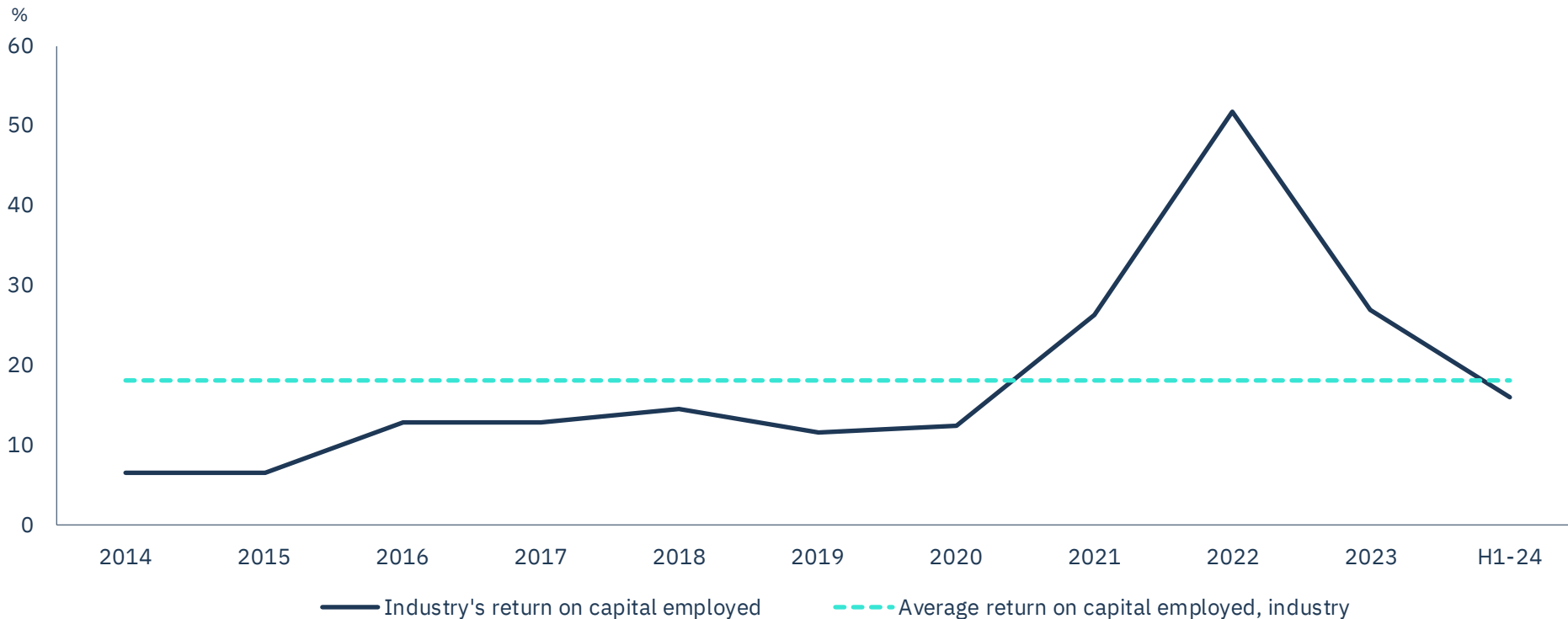
1.3 million ha total land area

Solid earnings despite slow cycle



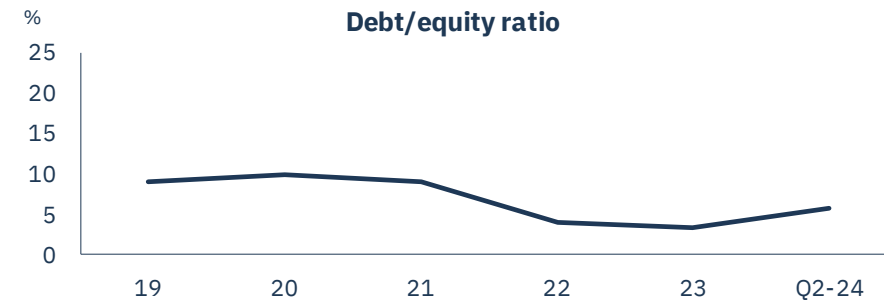
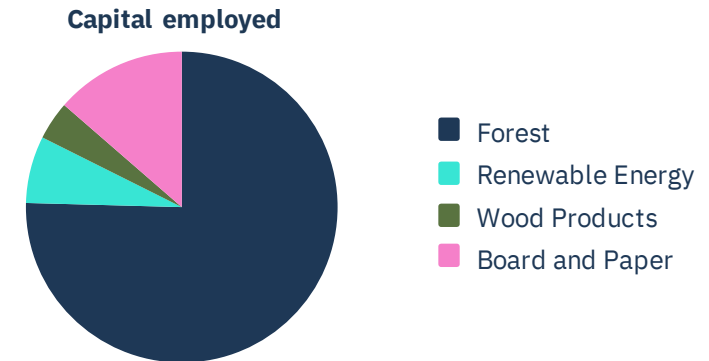
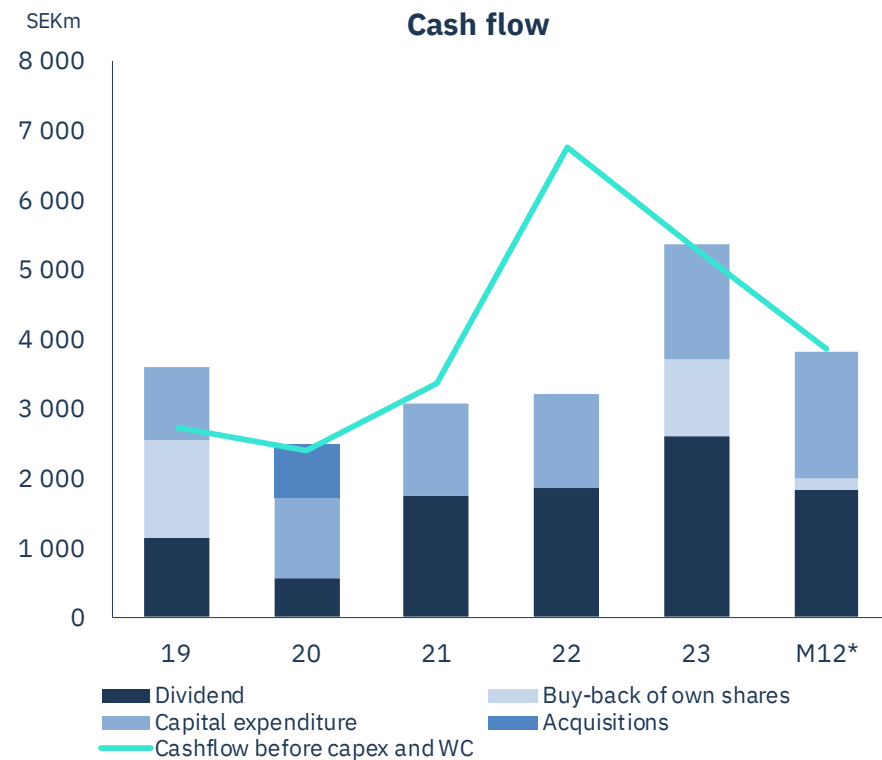
16% ROCE in our industry H1 2024

18% average for the last 10 years

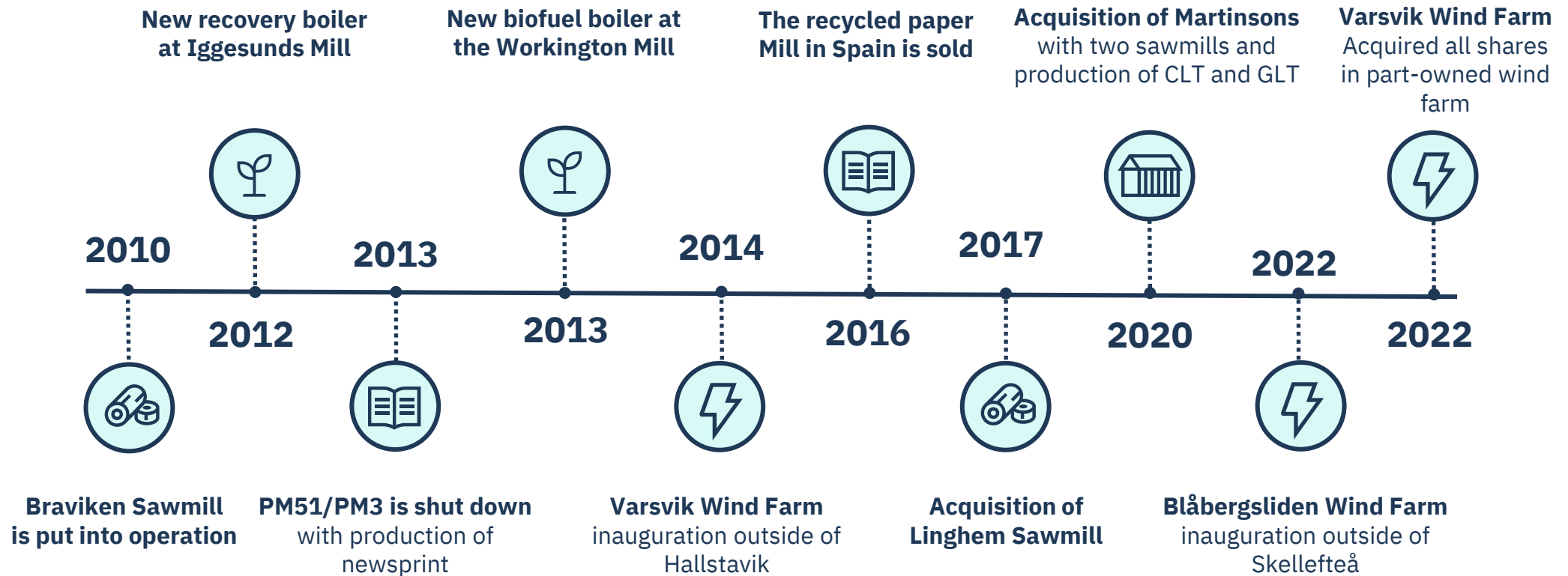


Net debt at 6% of equity

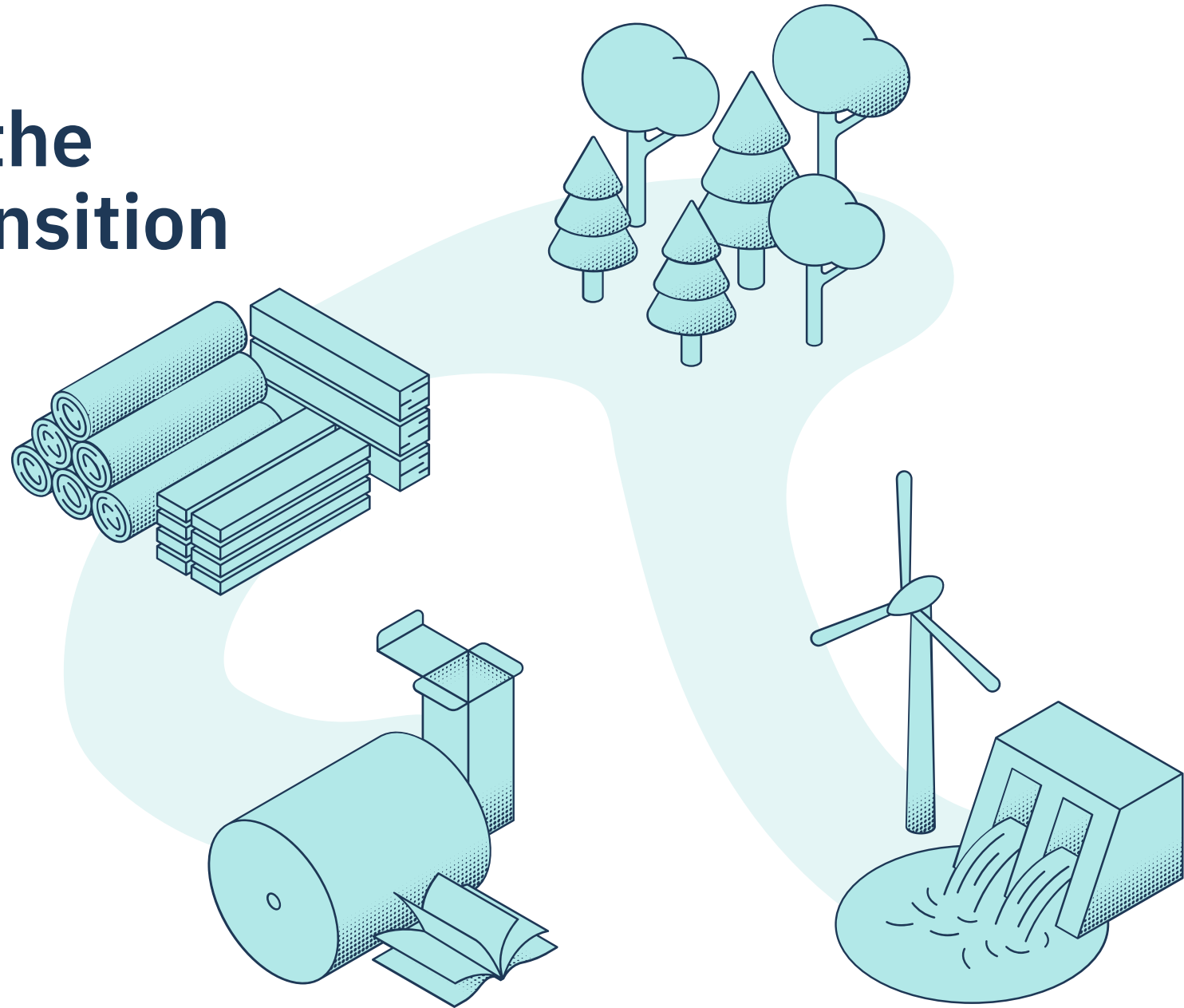
SEK 1.8 bn dividend distributed in Q2



Expanding wood products and wind power

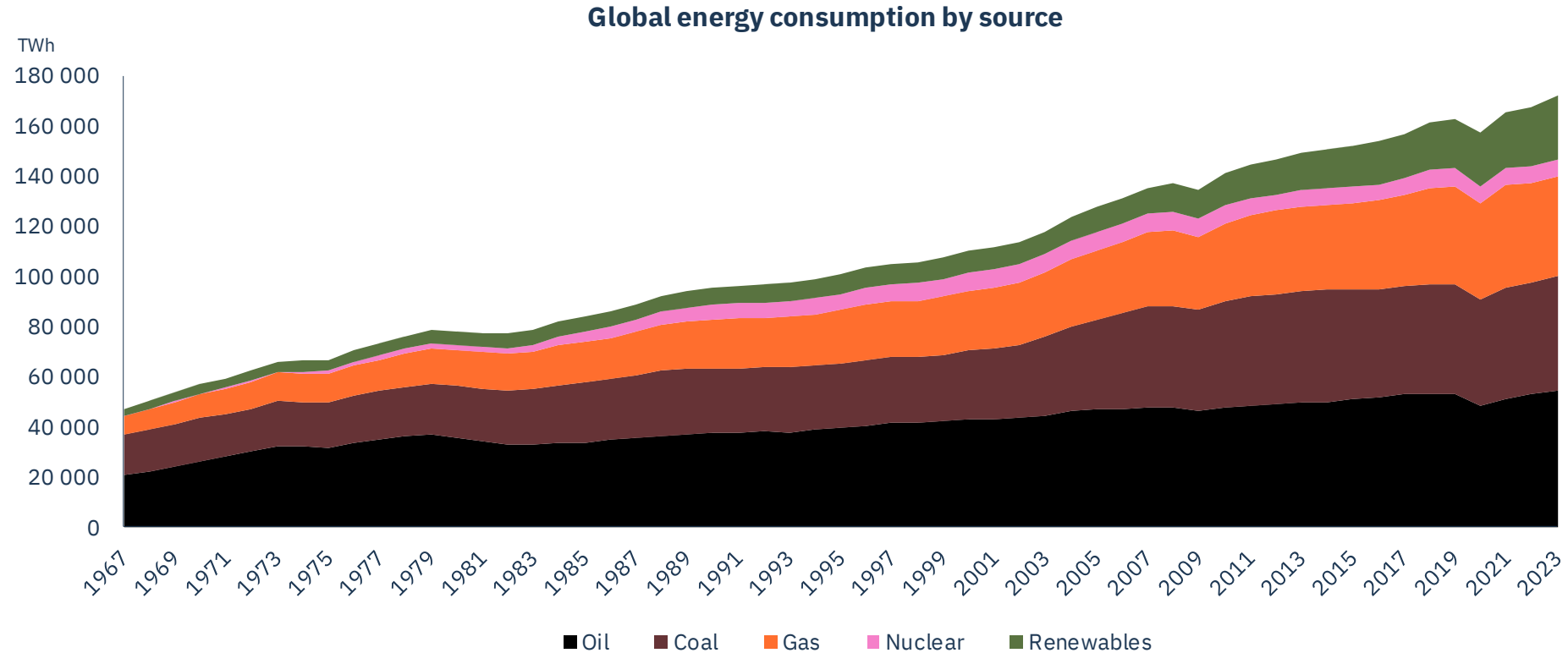


A bet on the green transition



The world is fossil fueled

Fossil energy has quadrupled last 50 years

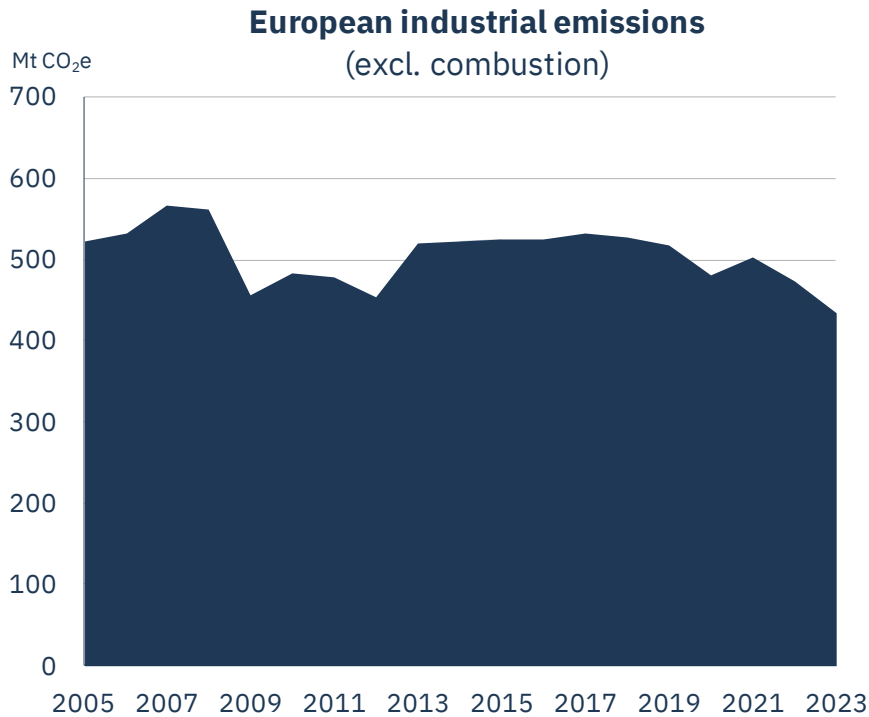


EU has high ambitions for climate & ecosystems

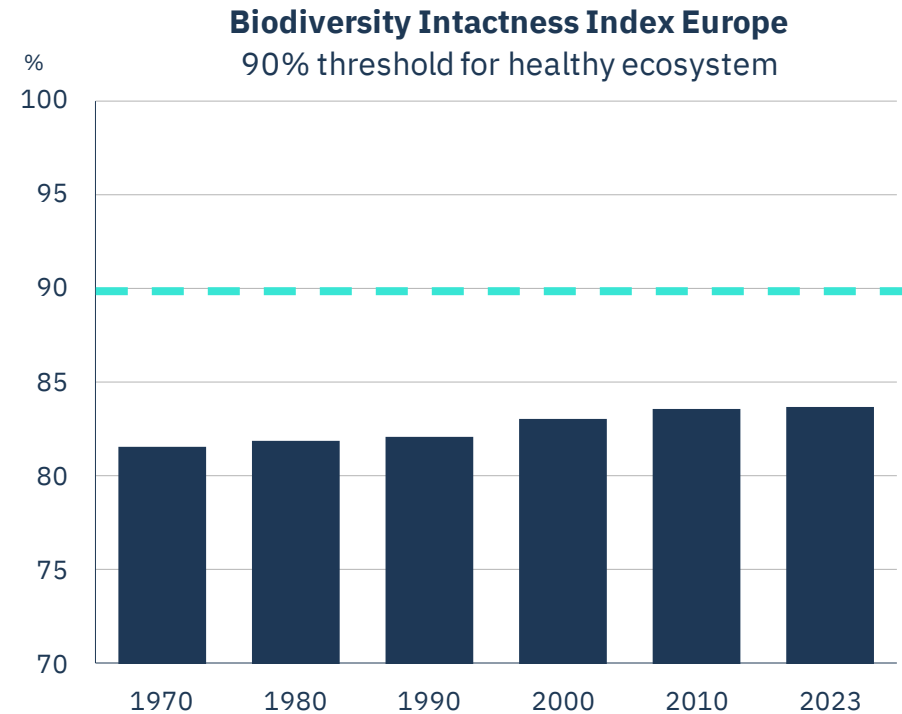


European industry has not decarbonised

Biodiversity is under pressure



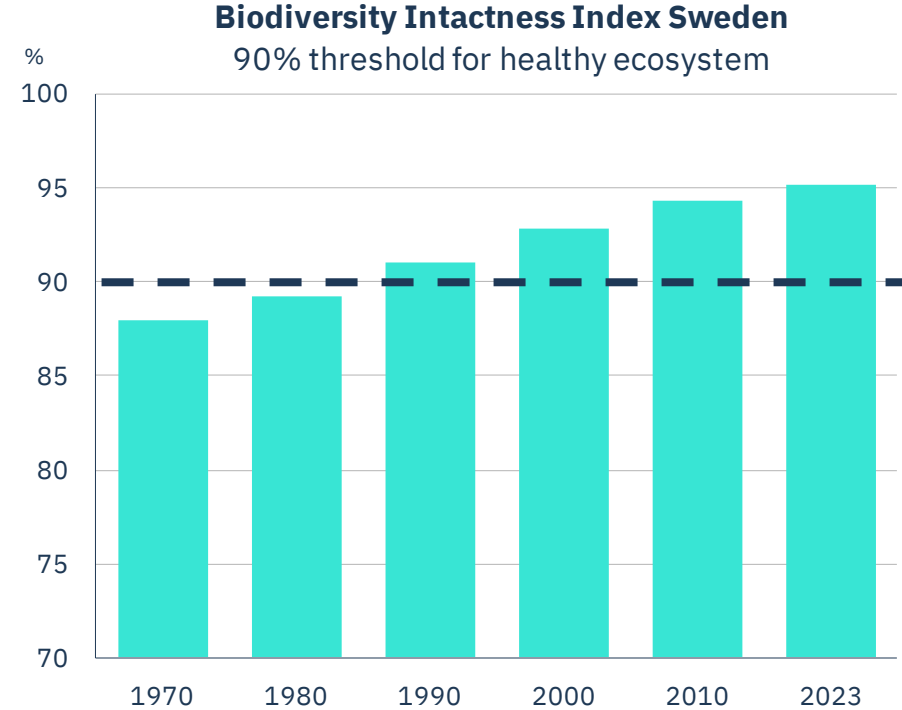
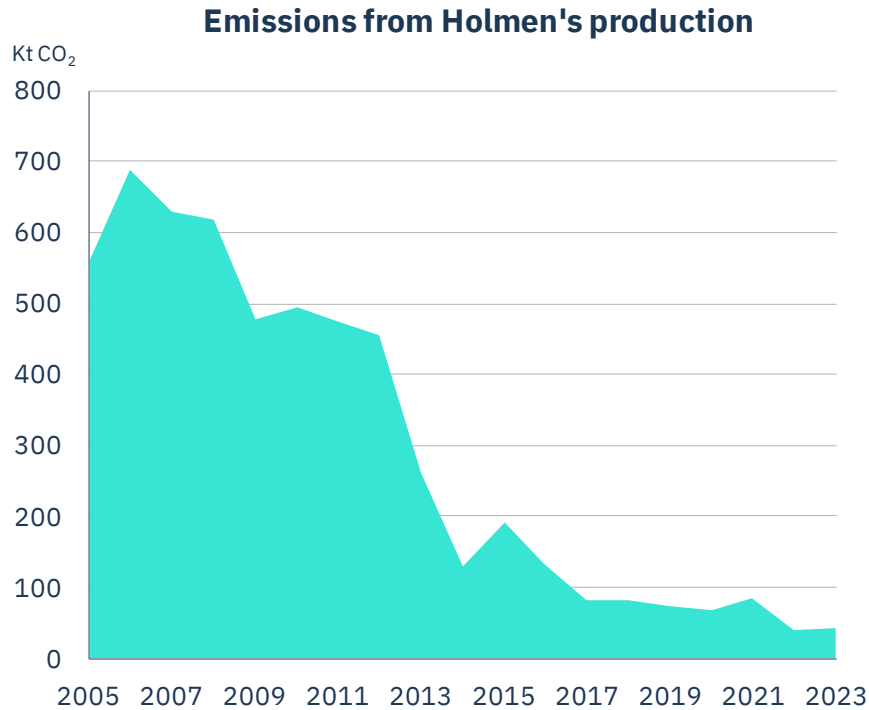
Source: European Environment Agency



Source: [Natural History Museum](#)

We have lowered our fossil emissions by 90%

Swedish ecosystems are in balance



Access to wood & fossil-free energy

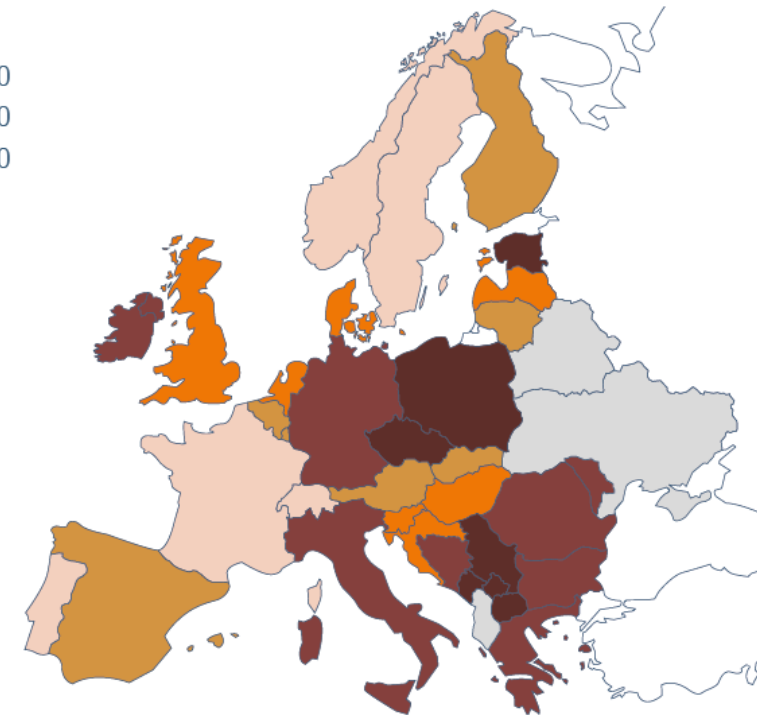
Forest assets*

- >65
- 51-65
- 31-50
- 11-30



Carbon intensity from electricity production**

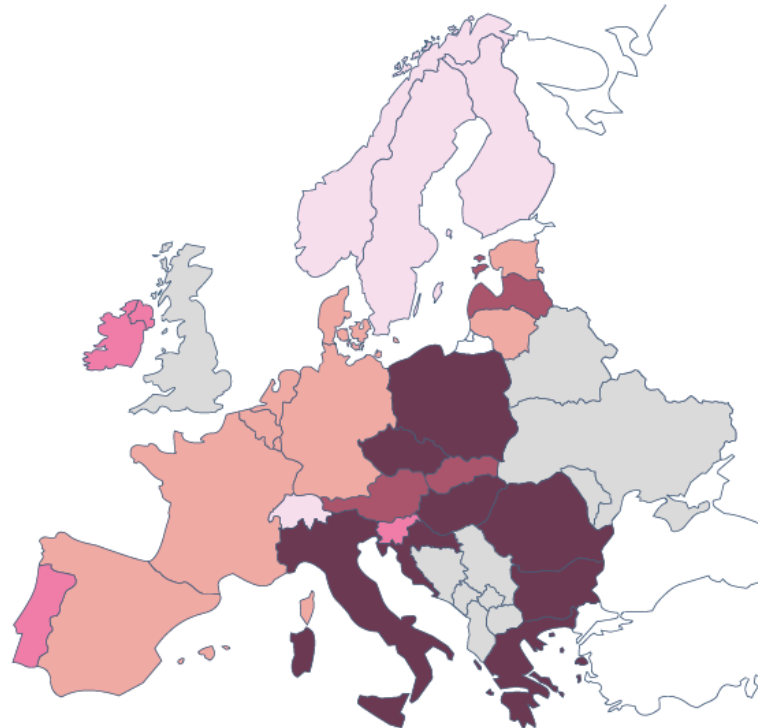
- <100
- 101-200
- 201-300
- 301-500
- >500
- No data



Clean air and plenty of water in the Nordics

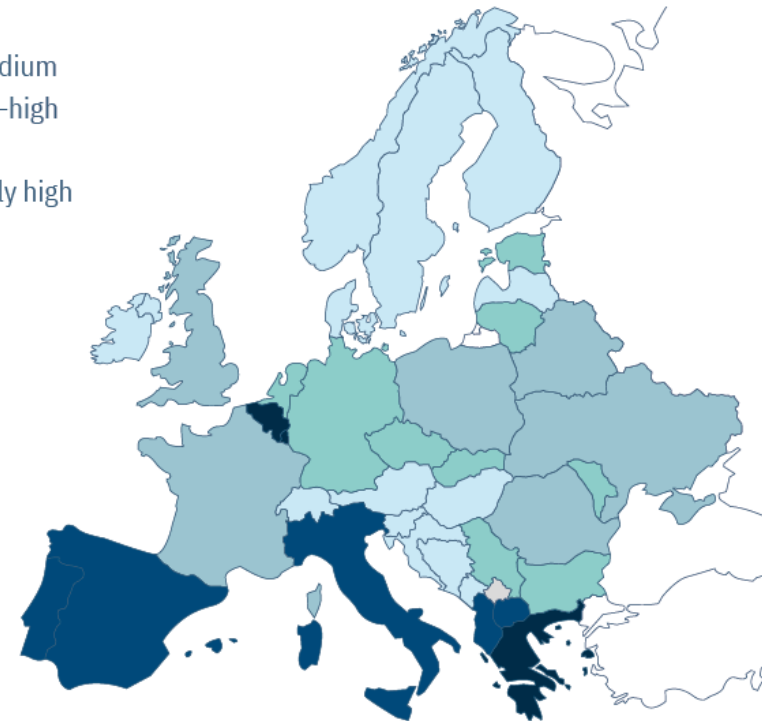
Air pollution*

- <8
- 8–9
- 10–11
- 12–14
- >14
- No data

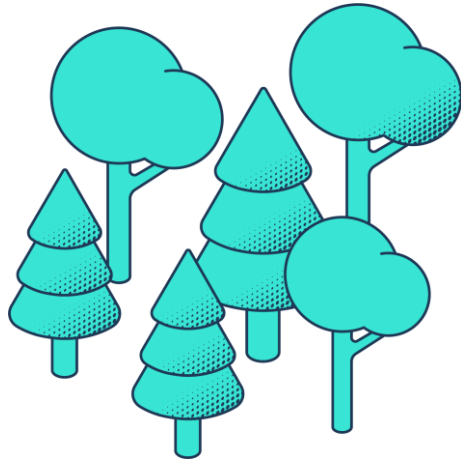


Water stress**

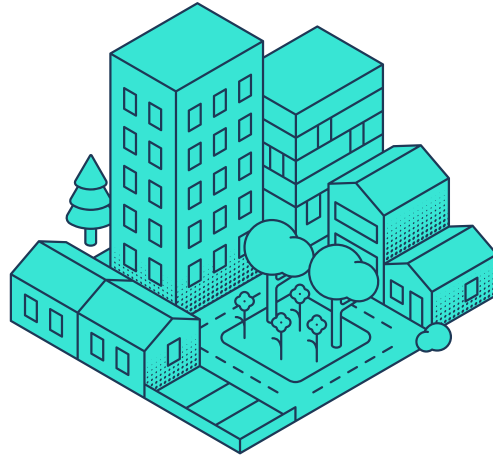
- Low
- Low–medium
- Medium–high
- High
- Extremely high
- No data



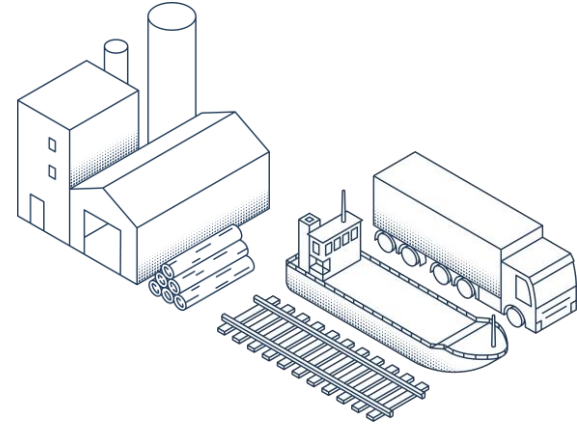
We're beyond net zero



1.6 Mt CO₂
Net increase in growing forest



0.5 Mt CO₂
Net storage in buildings



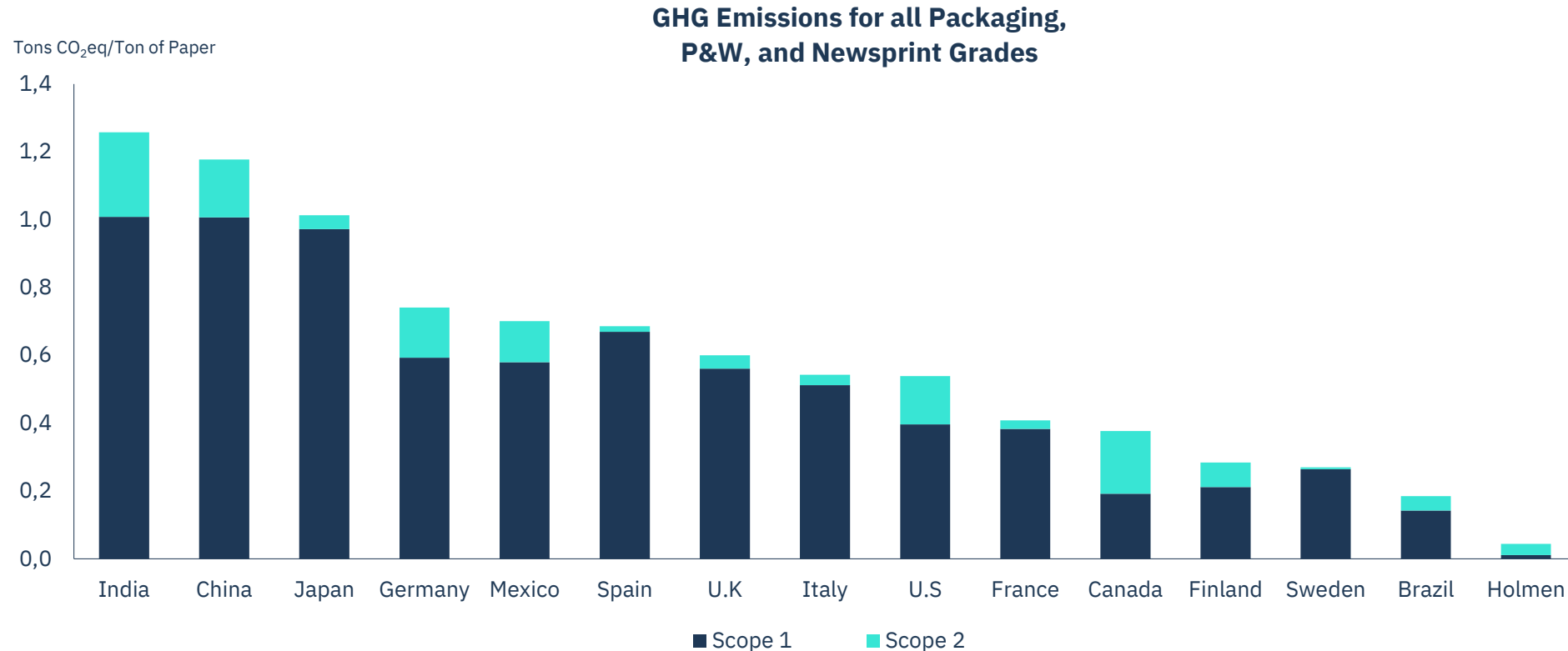
-0.1 Mt CO₂e Scope 1+2
-0.6 Mt CO₂e Scope 3

Board and Paper

1.5 million tonnes per year

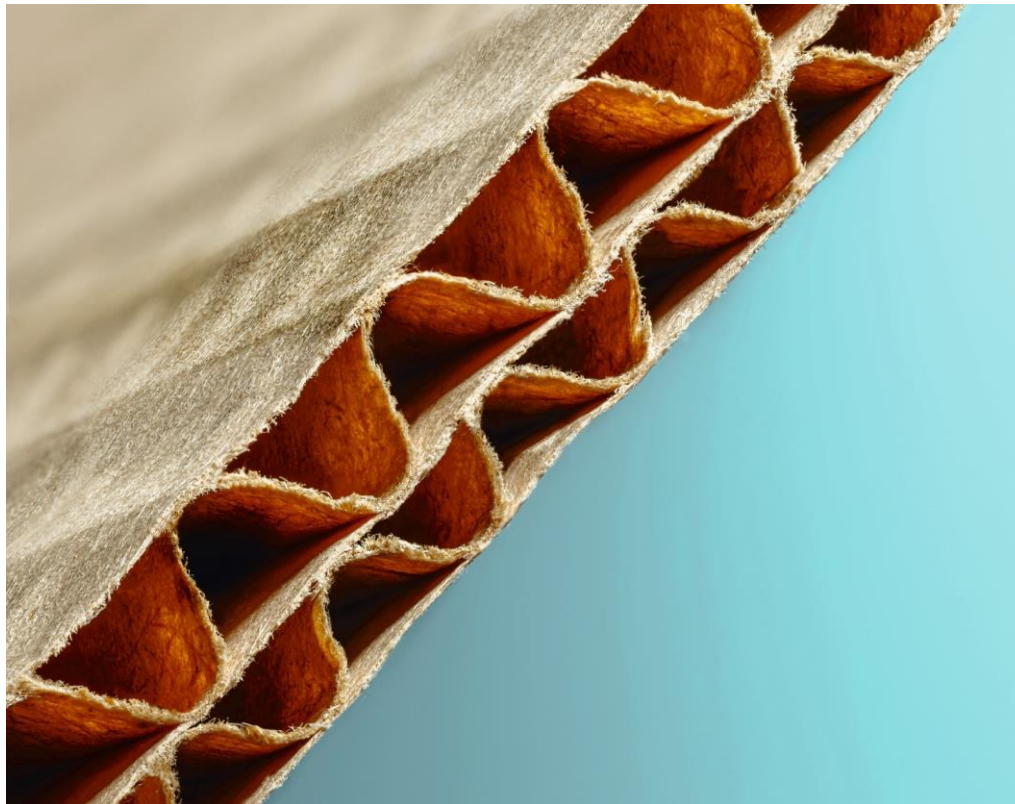
Helping our customers with their CO₂ footprint

Consumer board, transport packaging, books & magazines

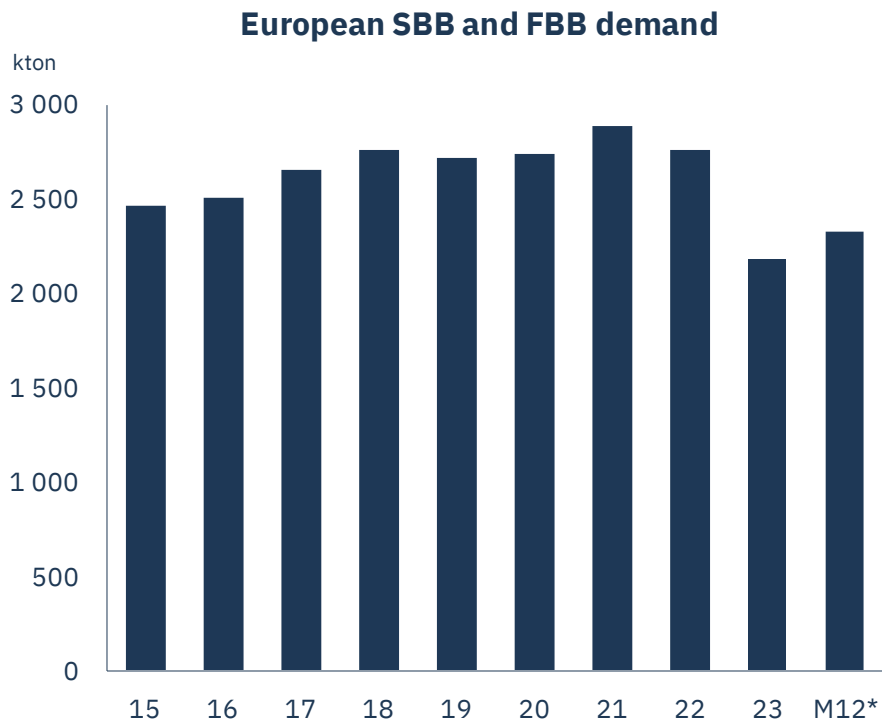


Investing to enter transport packaging

While strengthening the book offering



Board market gradually recovering



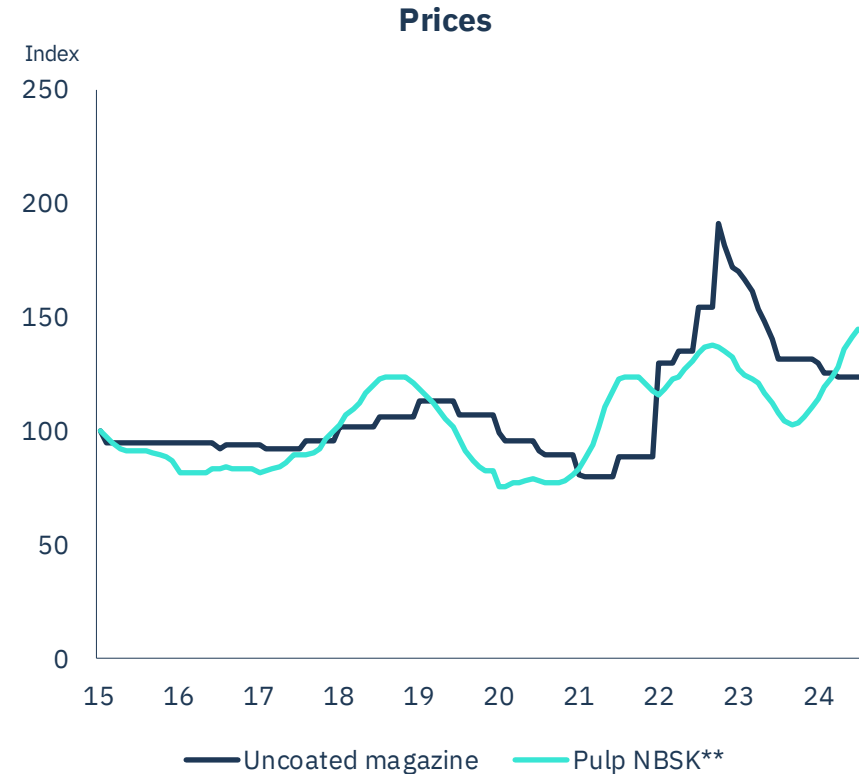
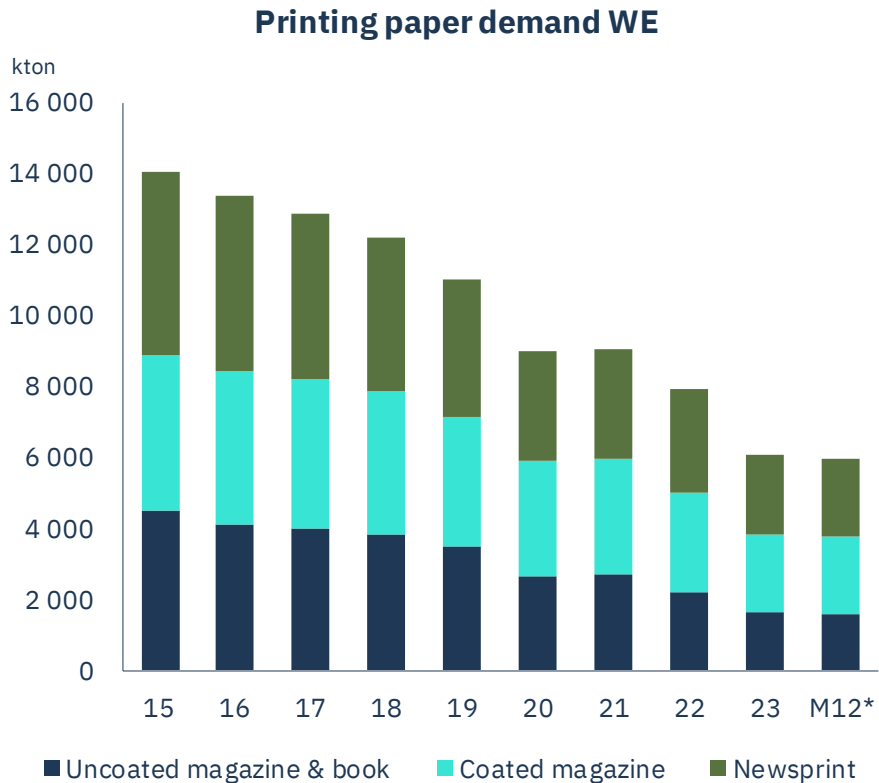
*Sep 2023 – Aug 2024

**Adjusted for rebates

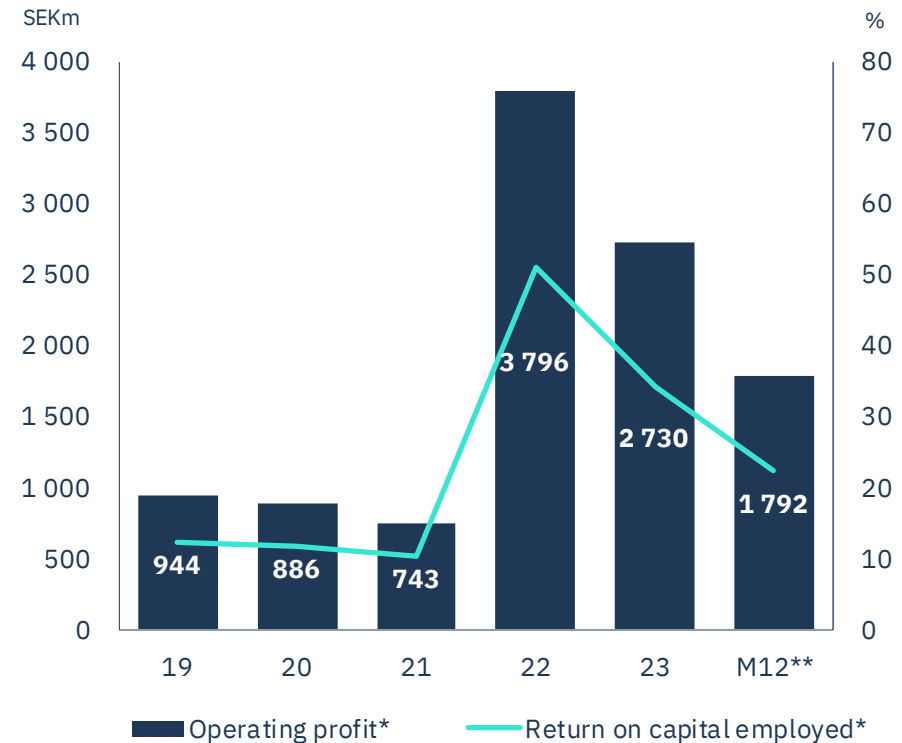
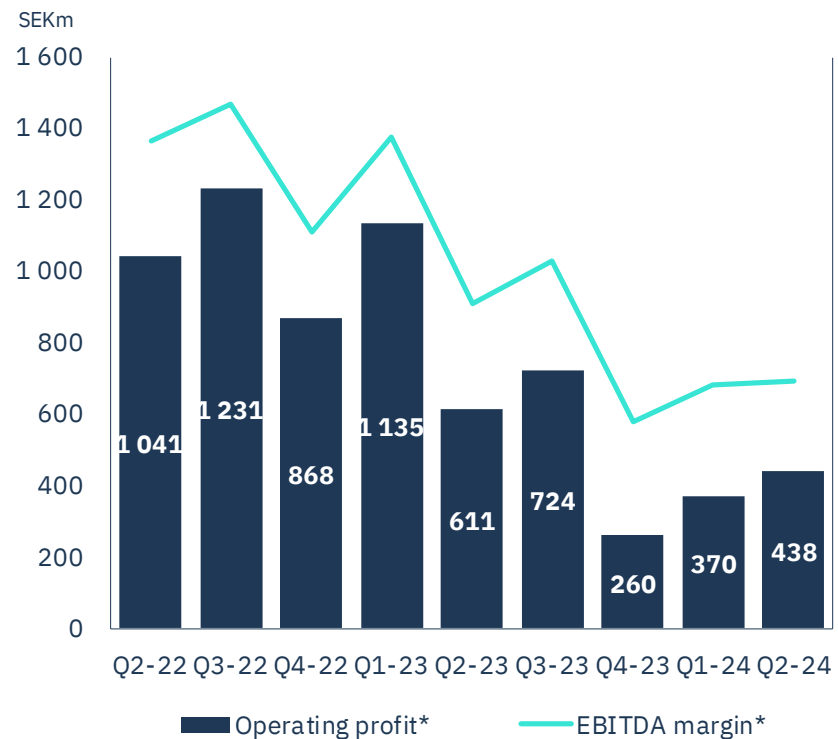
Source: CEPI and Fastmarkets RISI

Stable paper market

Supported by increasing fibre costs



Solid ROCE over time

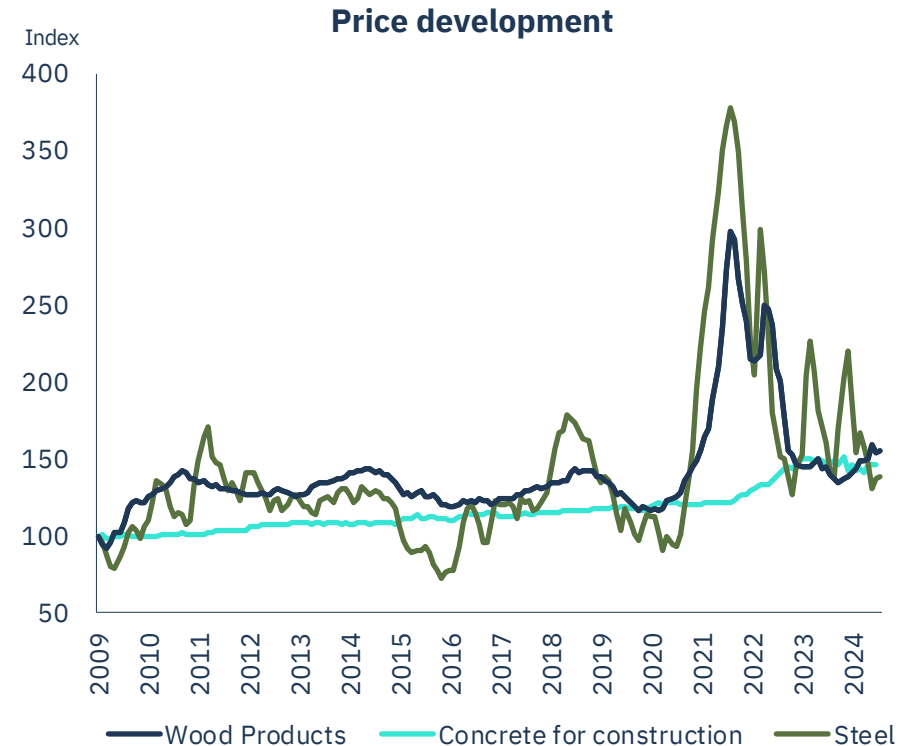
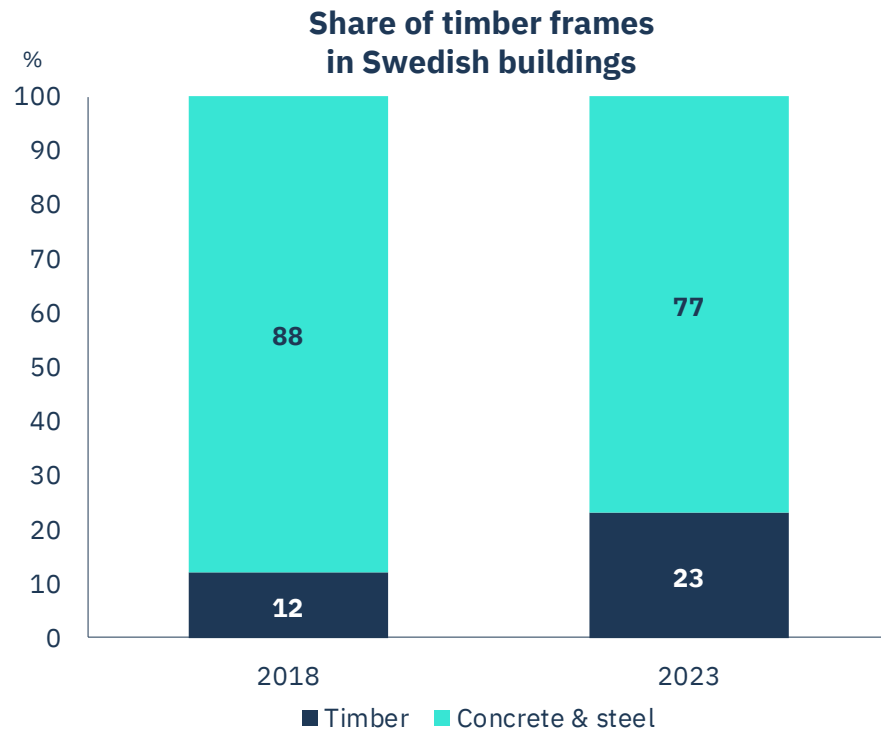


Wood Products

1.5 million m³ per year

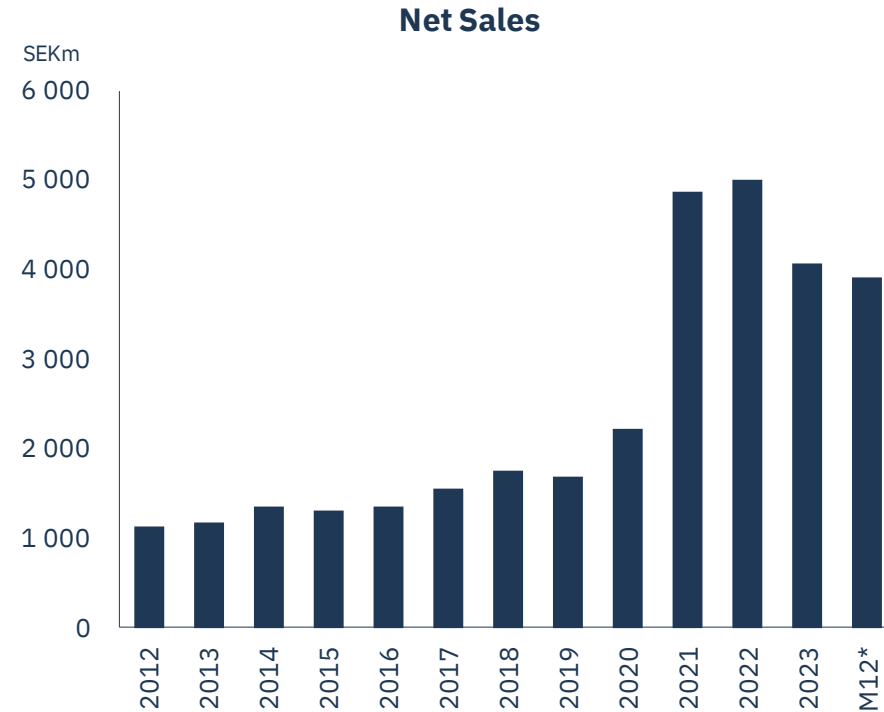
Offer a green alternative to concrete & steel

CBAM will push up the cost for building materials



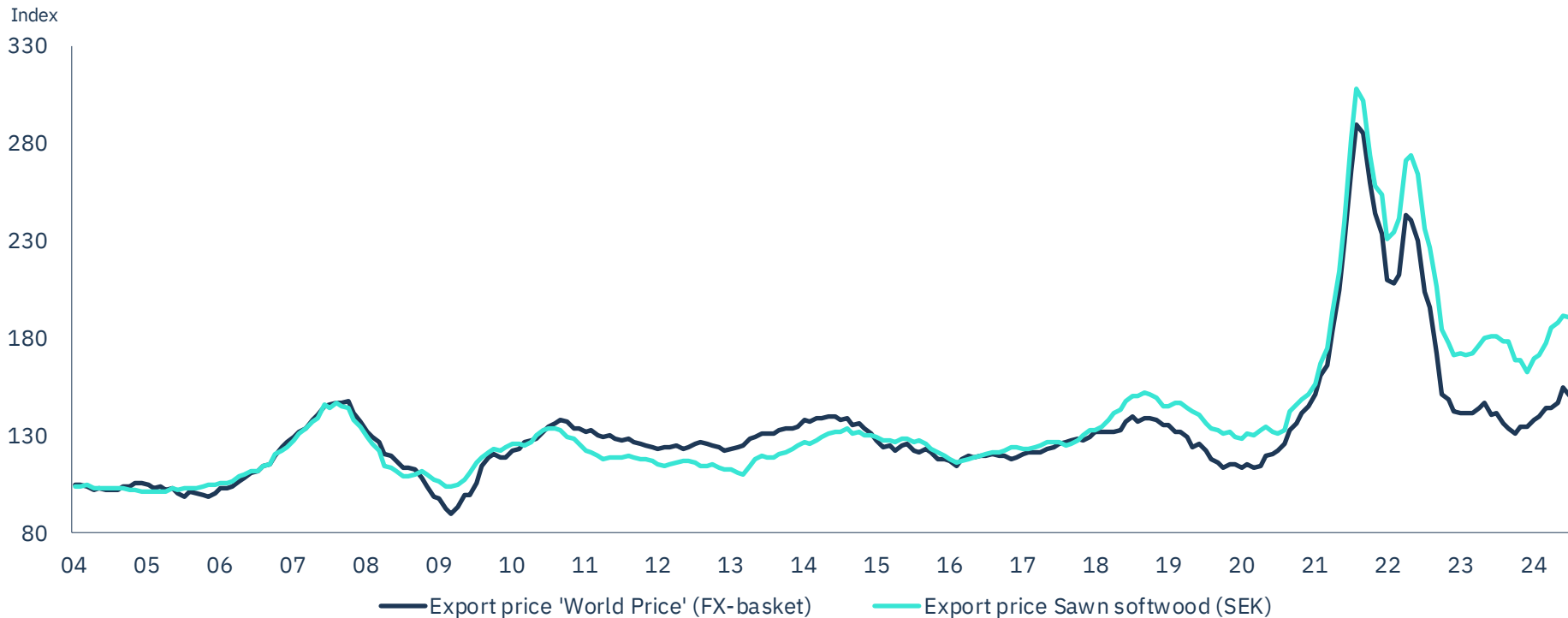
Developing our asset base with targeted Capex

- Finalising upgrade of Iggesund Sawmill
- Establishing a logistic hub at Braviken for GLT
- Ramping up CLT production after removing bottle-neck

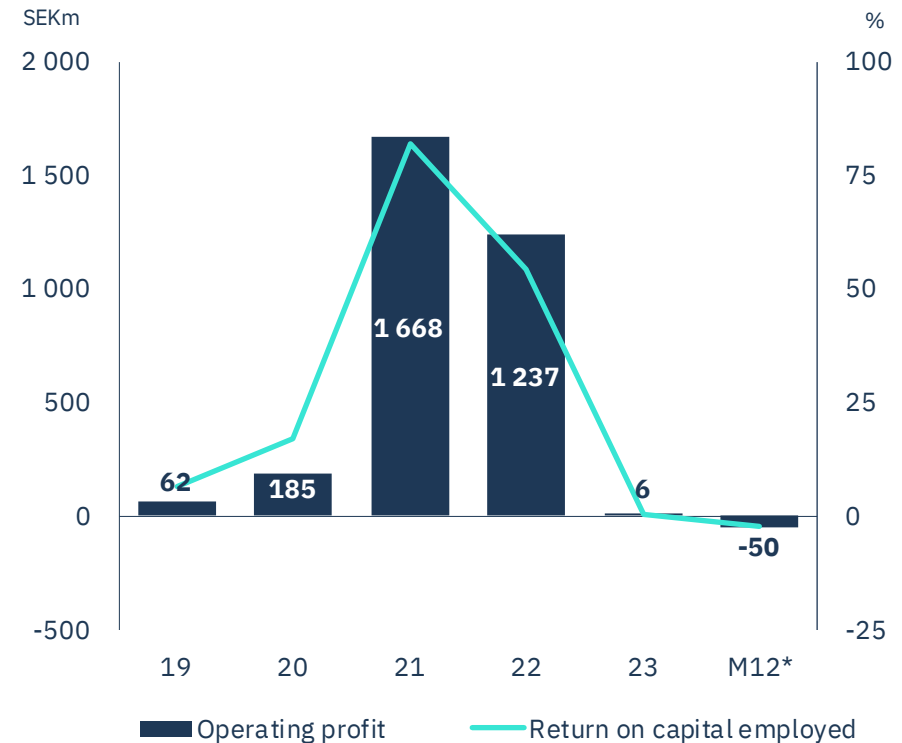
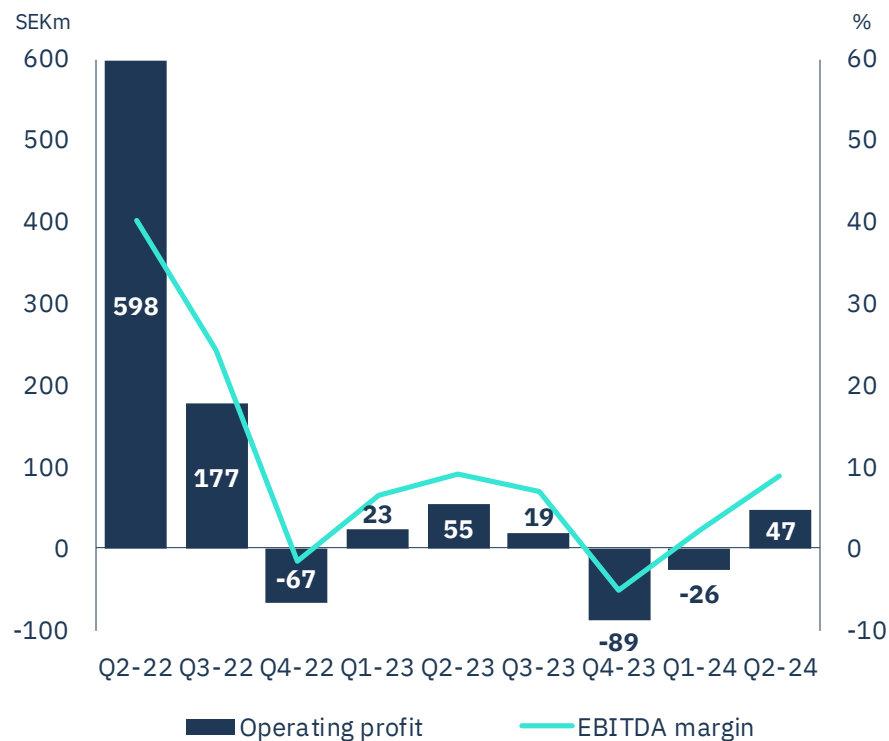


Slow constructional cycle

Price increase driven by seasonal uptick in demand



Margin under pressure from high log costs



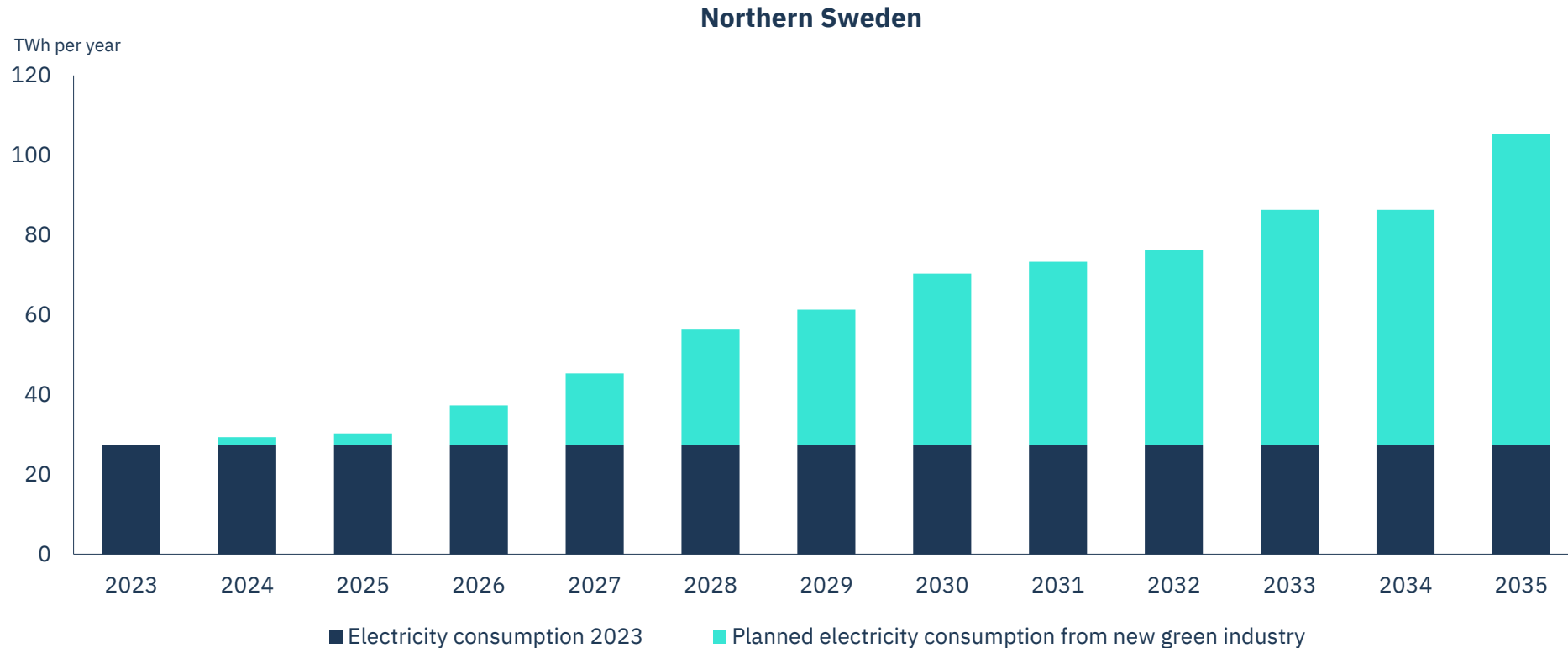
Renewable Energy

1.8 TWh per year

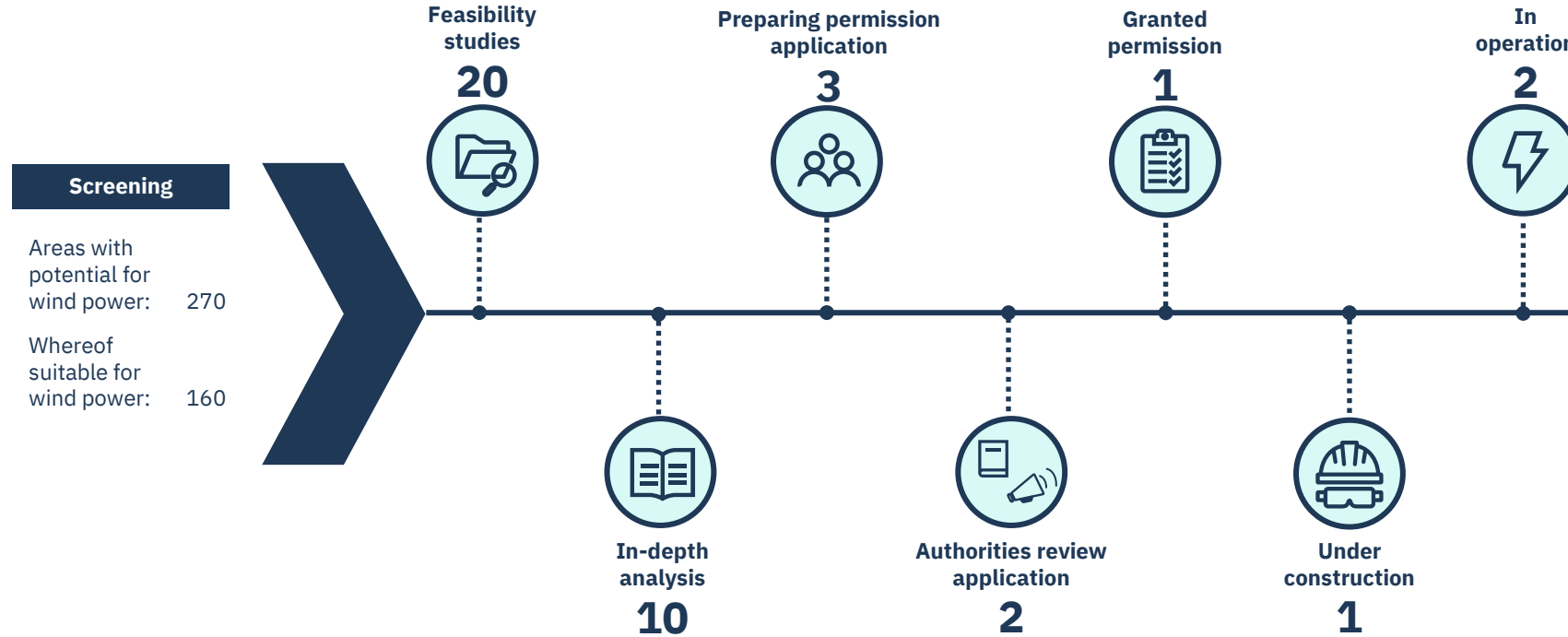


Supporting the emerging green industry

Blisterliden will grow our renewable production another 20%

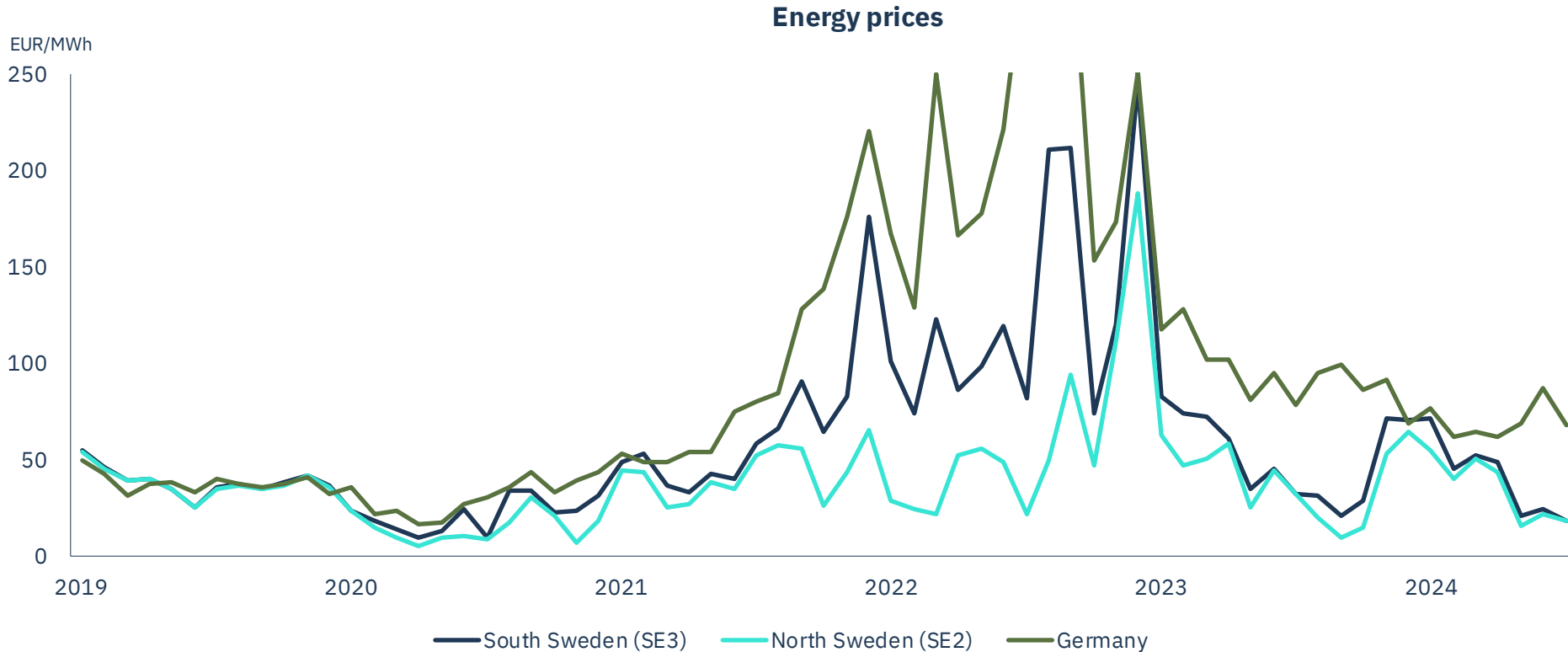


Developing a wind farm portfolio

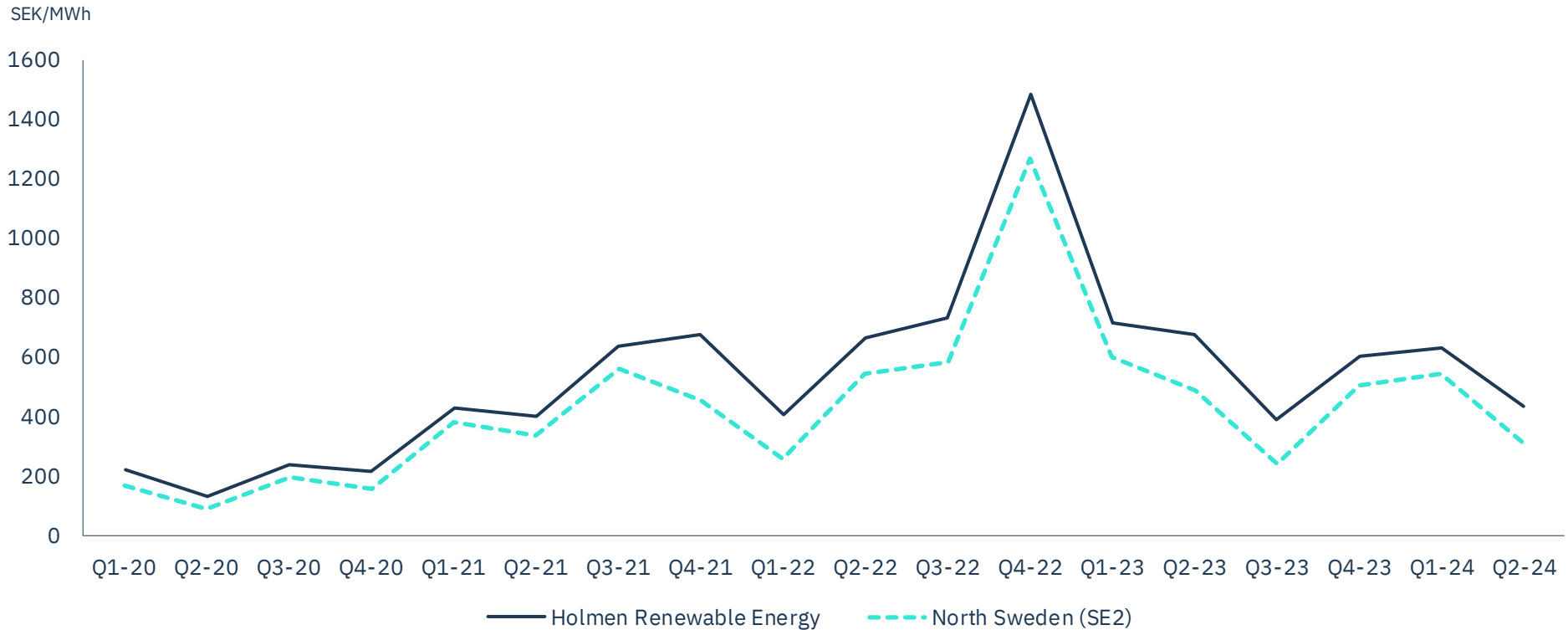


Spread vs Germany widened again in Q2

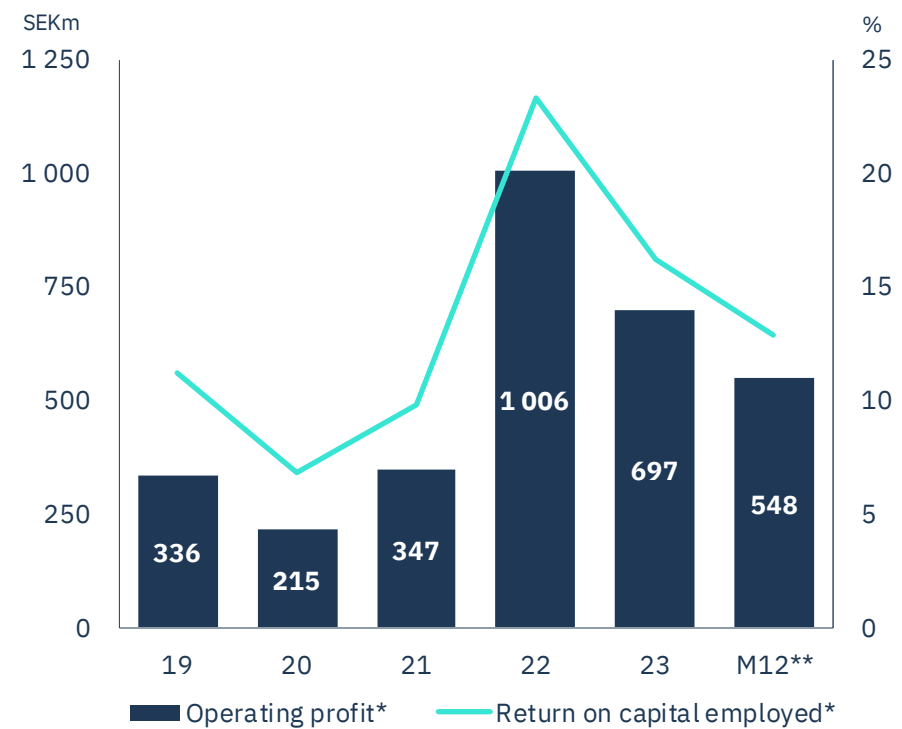
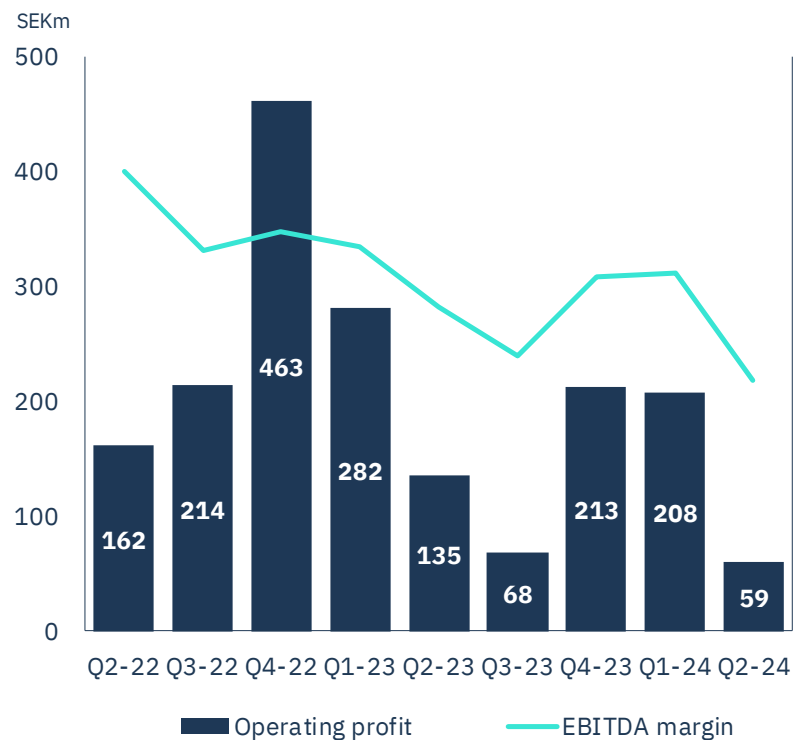
Nordic prices 20% below normal levels for a Q2



30% premium to market price



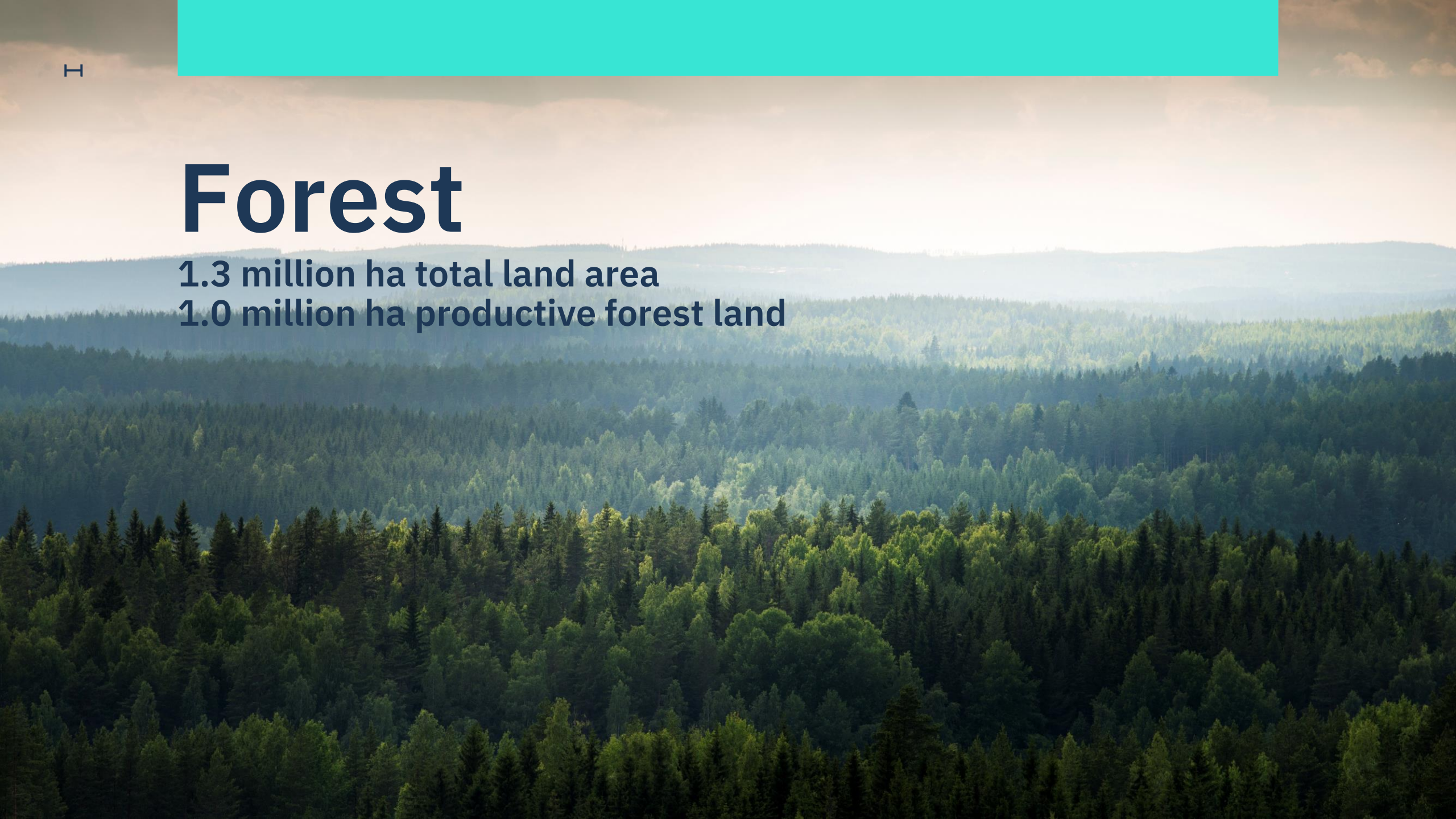
Low prices & production in Q2



Forest

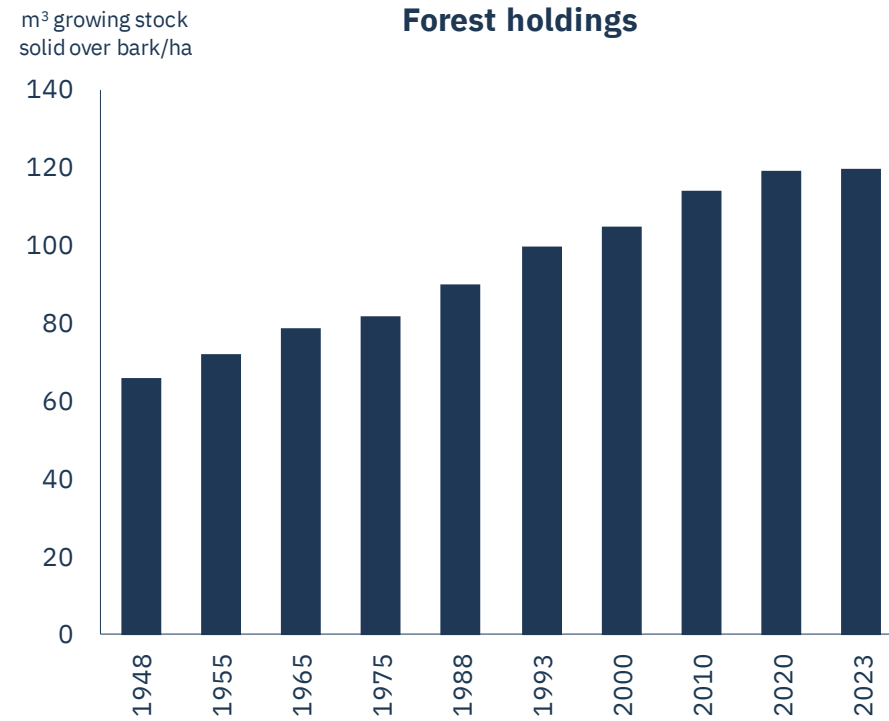
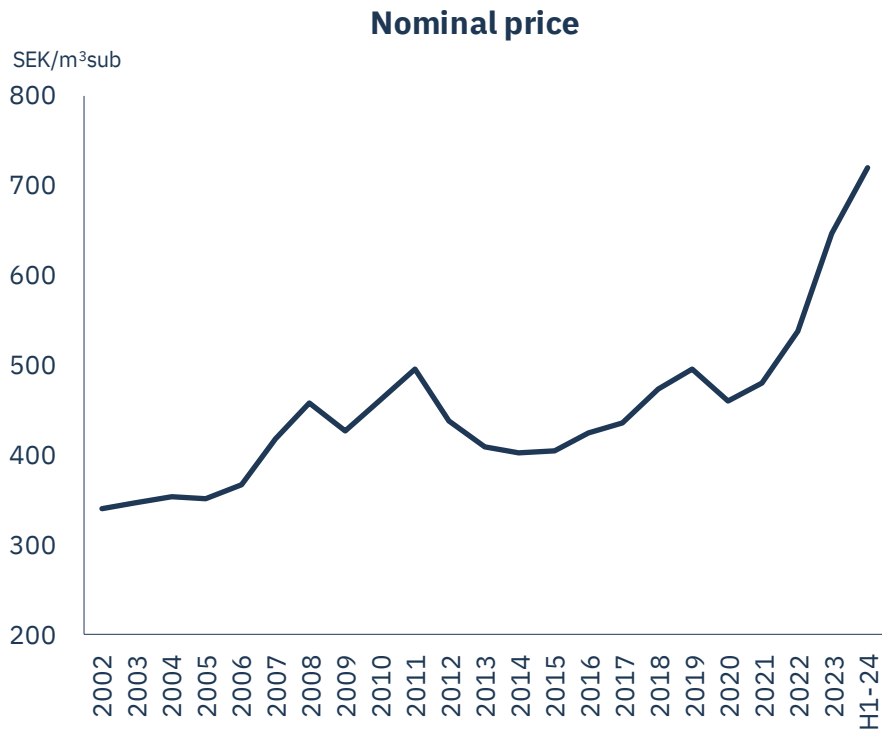
1.3 million ha total land area

1.0 million ha productive forest land

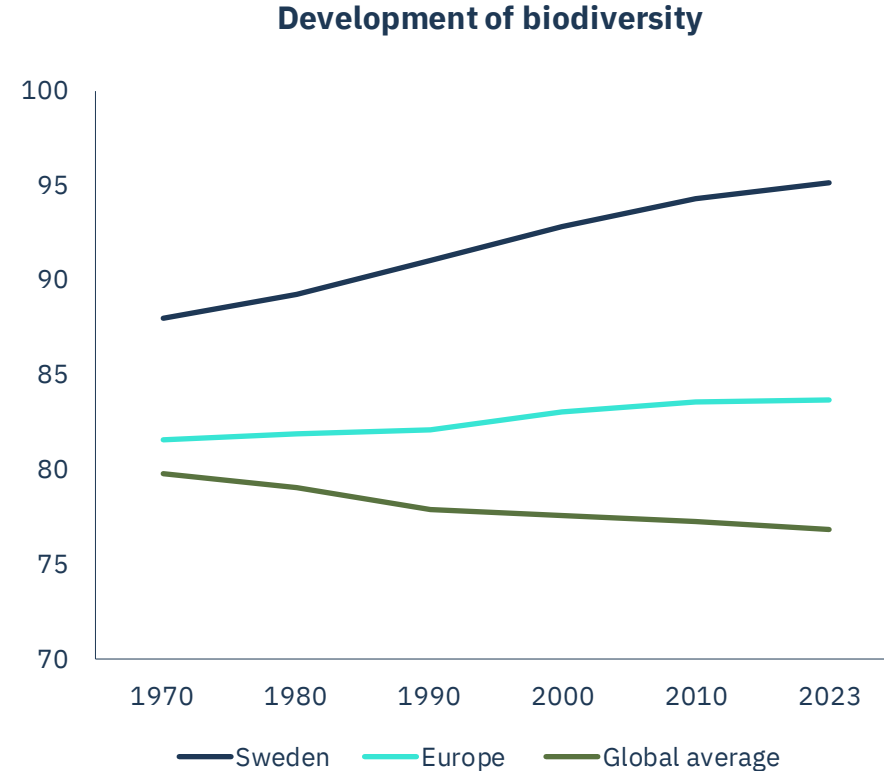
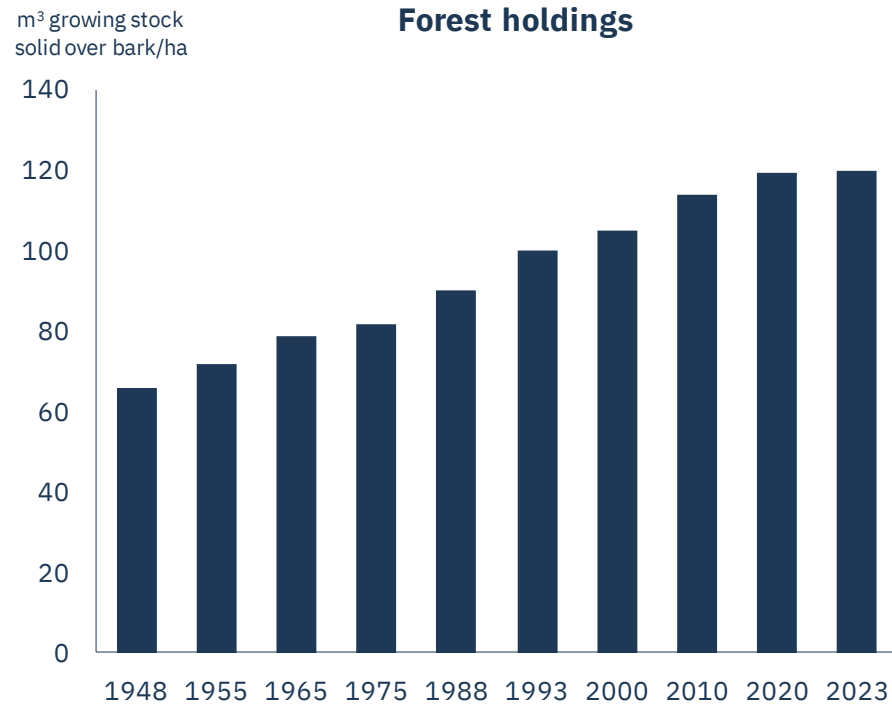


Real price increase of 1.6% p.a. last 20 years

Standing timber volume has grown by 0.6% per year

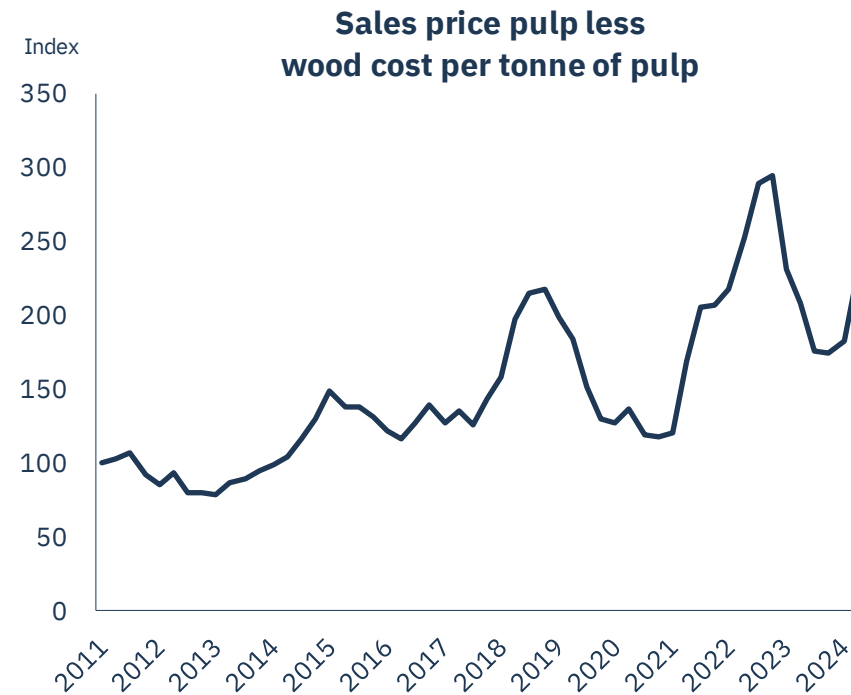


Growing forests with increased biodiversity

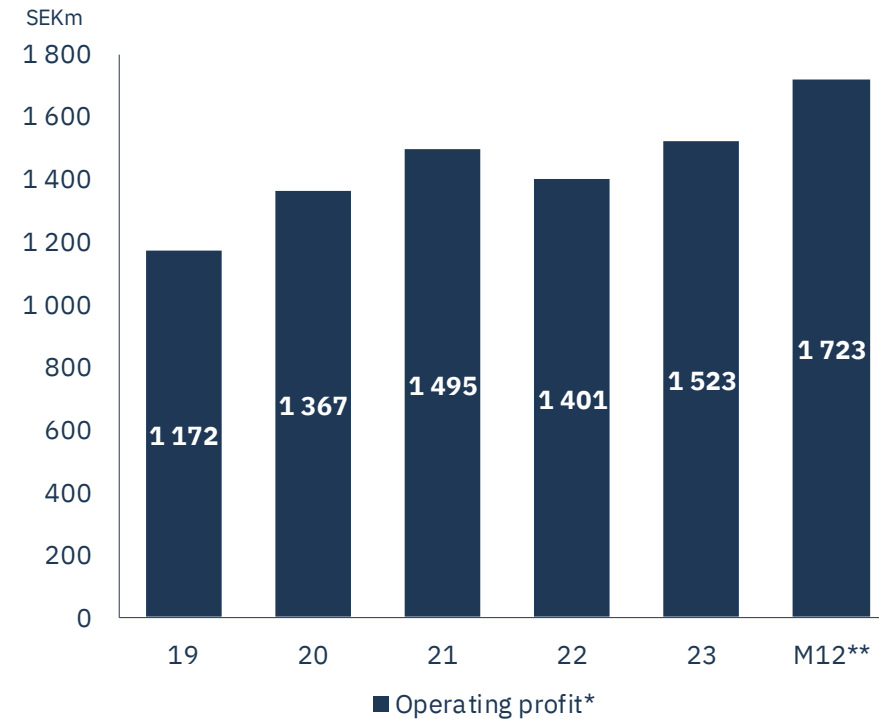
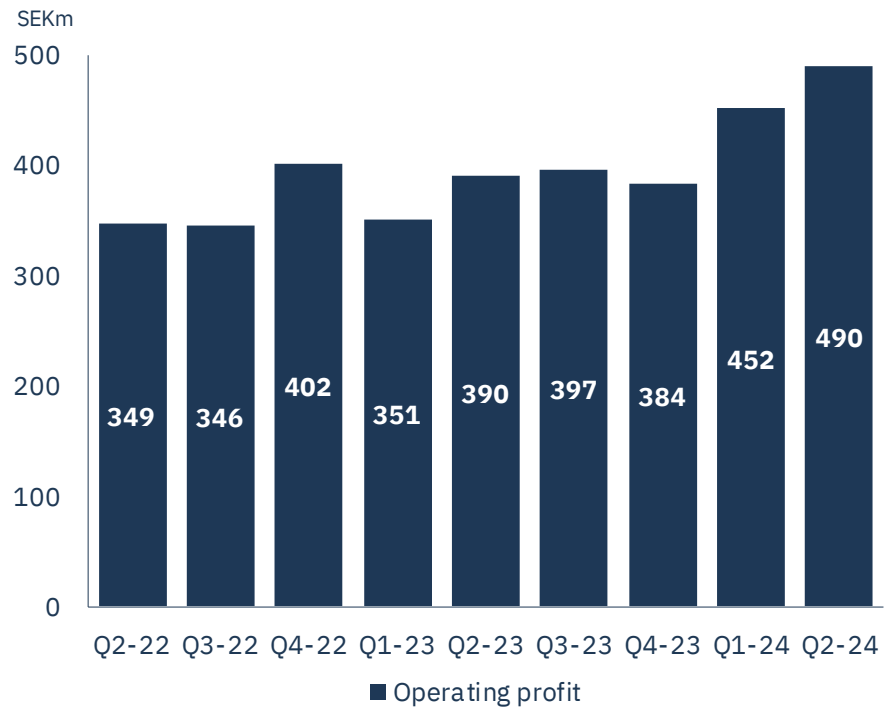


Still good mark-up on wood for pulp

Normal relationship between sawn wood & net log cost



Harvesting cash-flow has increased 60% in 3 years

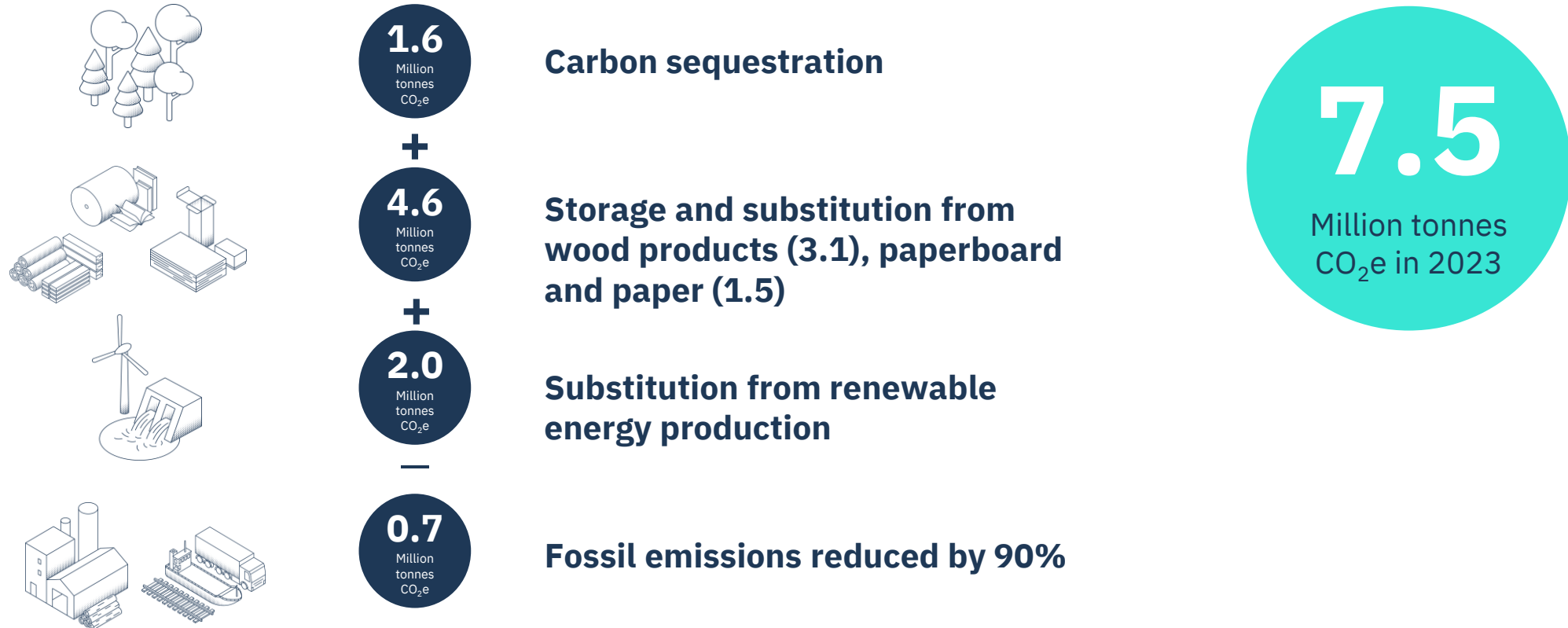


A photograph of a forest. In the foreground, a large, textured tree trunk is visible on the left side. The background is filled with many other trees, some of which are blurred, creating a sense of depth. The ground is covered with green grass and moss. The text "Growing a sustainable future" is overlaid in the center of the image in a bright cyan color.

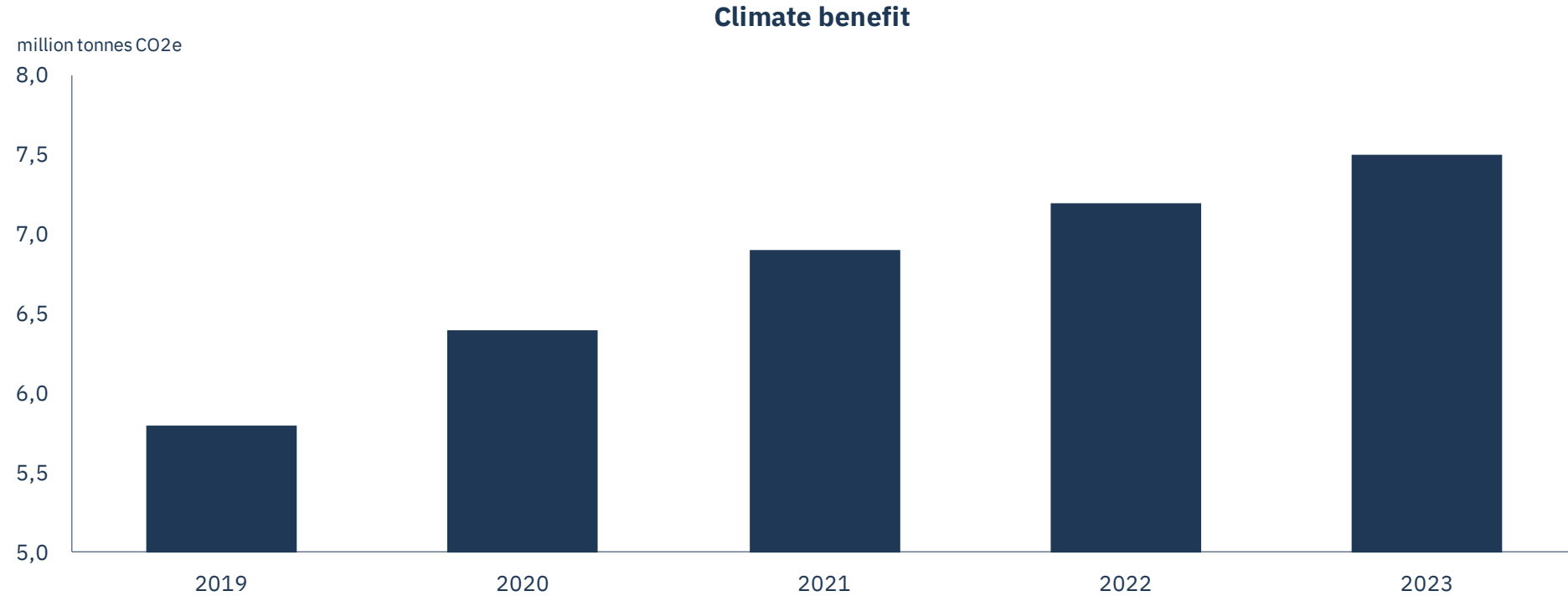
Growing a sustainable future

We grow houses

Leftovers are converted into renewable packaging and paper
We harvest the energy that blows and runs through our forests



Increasing our contribution to the climate



HOLMEN

holmen.com