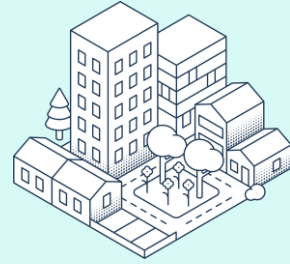
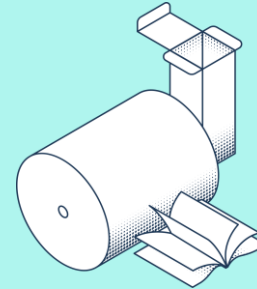
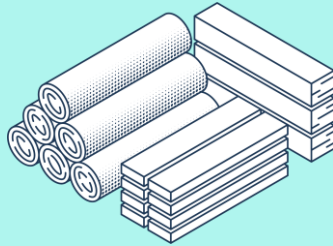


Growing a sustainable future



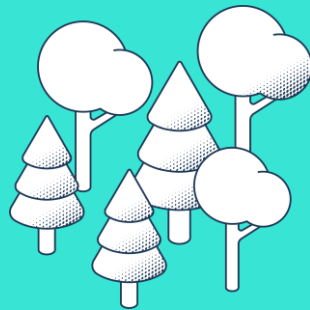


Wood products
1.5 Mm³



Packaging,
books & magazines
1.5 Mton

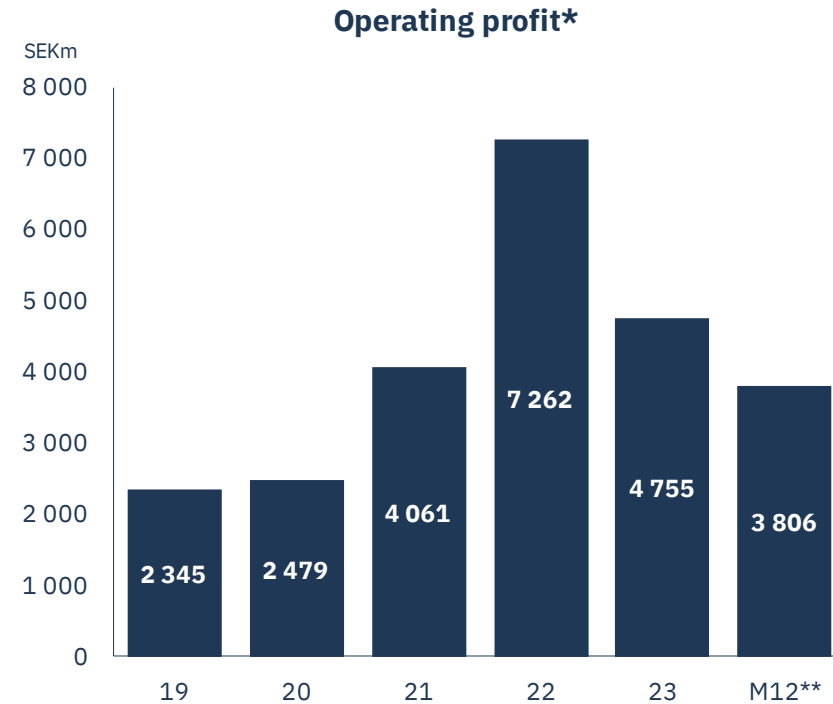
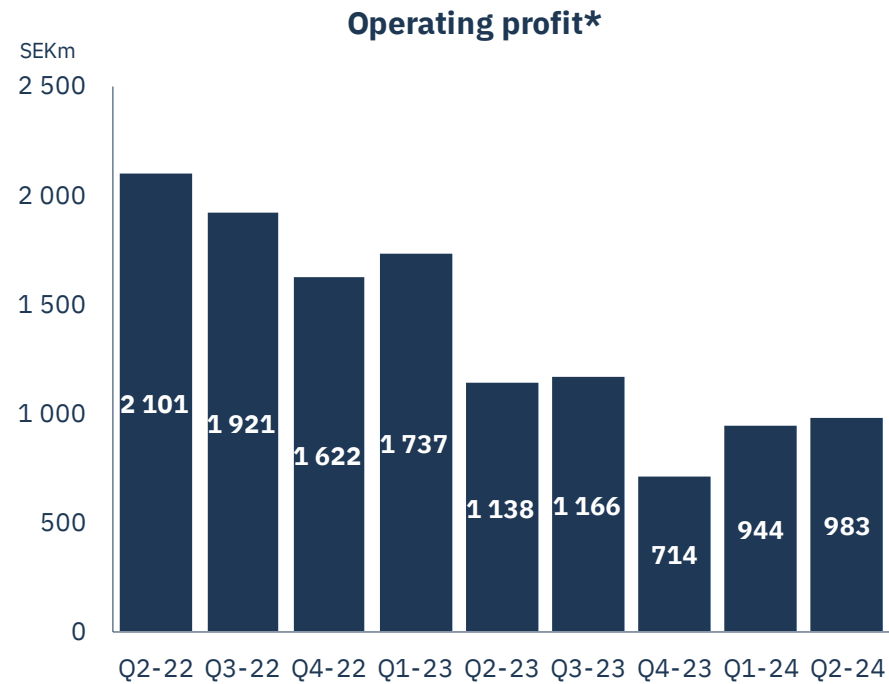
Harvest in own forests
2.8 Mm³



Hydro and wind power
1.8 TWh

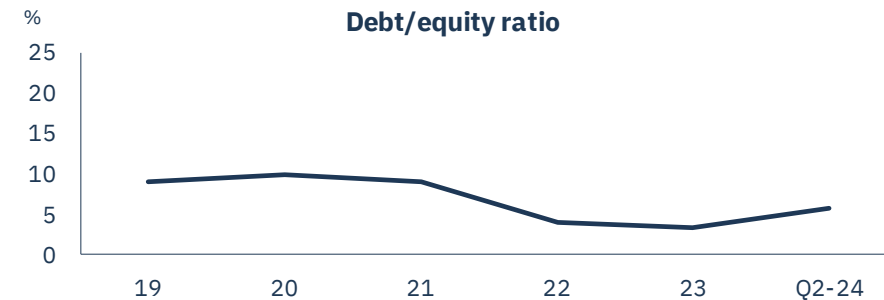
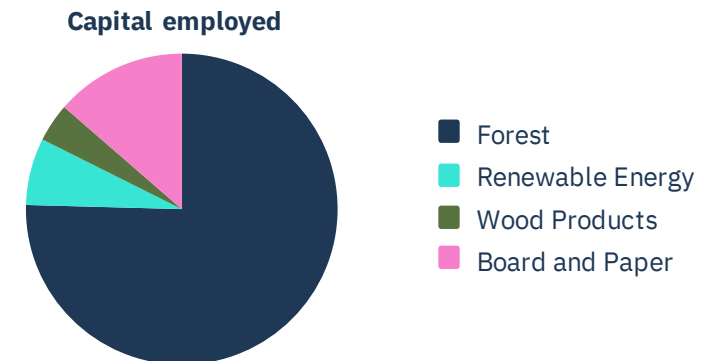
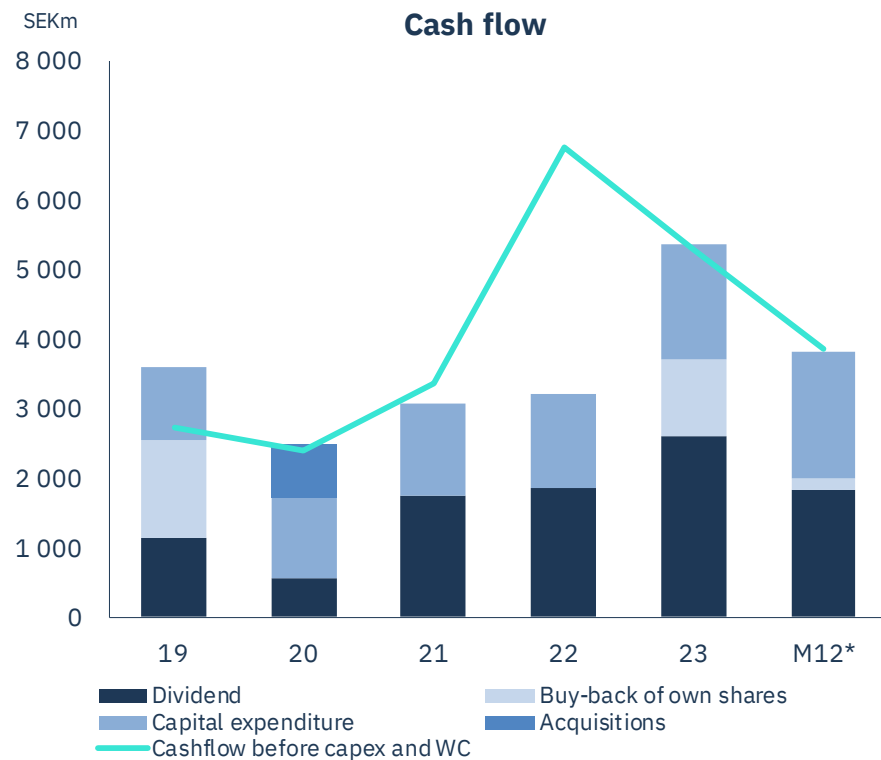
1.3 million ha total land area

Solid earnings despite slow cycle

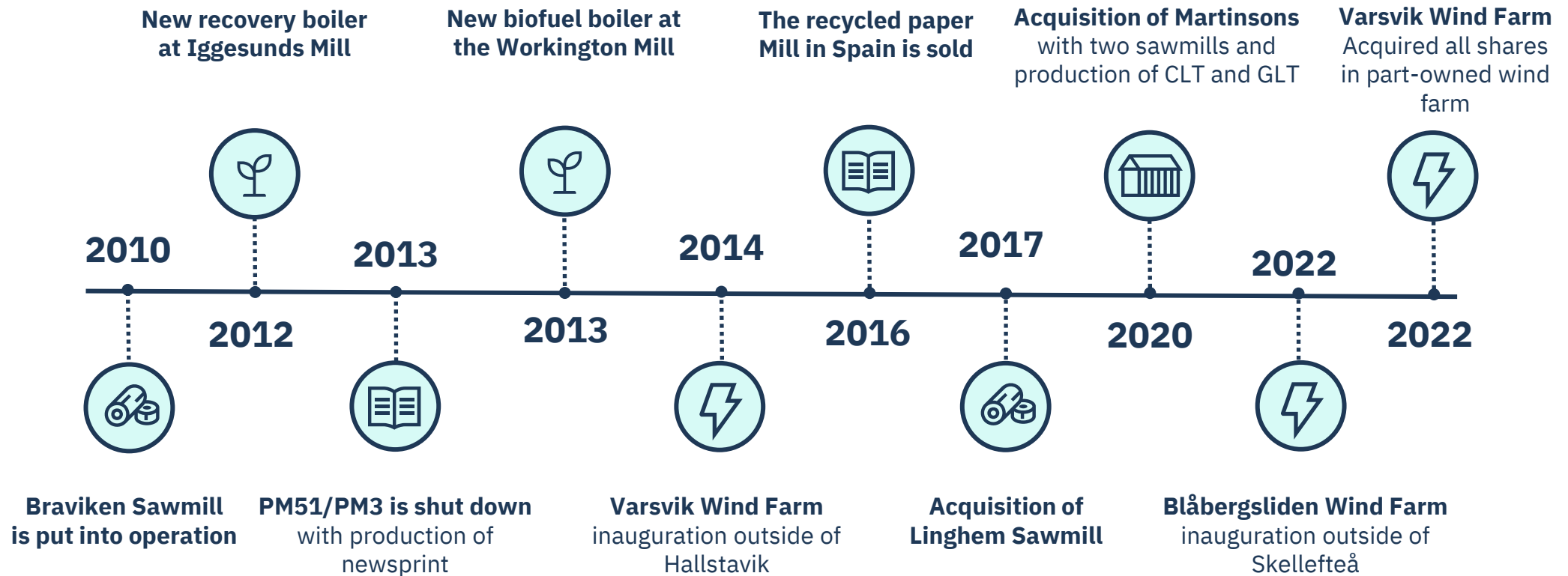


Net debt at 6% of equity

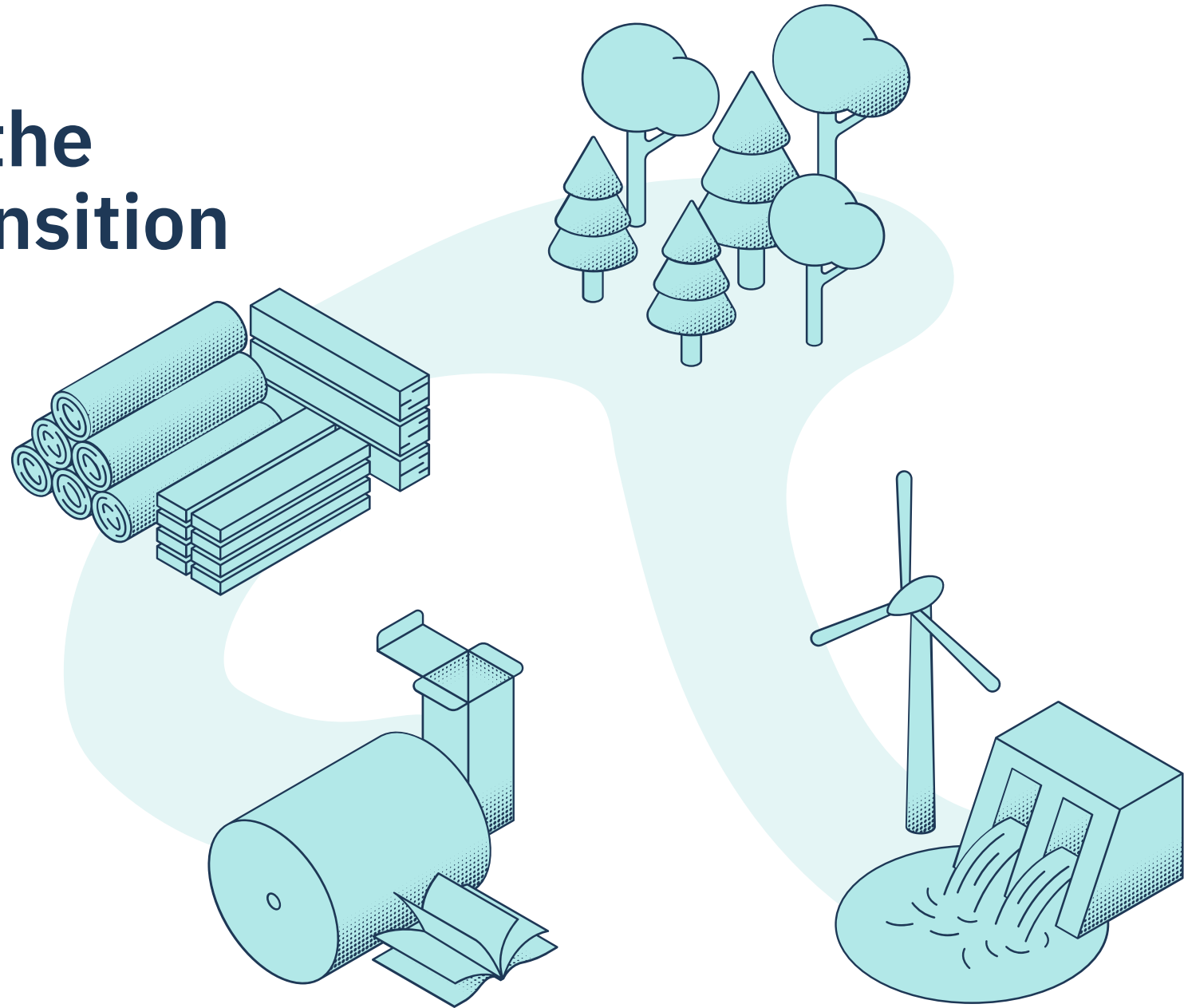
SEK 1.8 bn dividend distributed in Q2



Expanding wood products and wind power

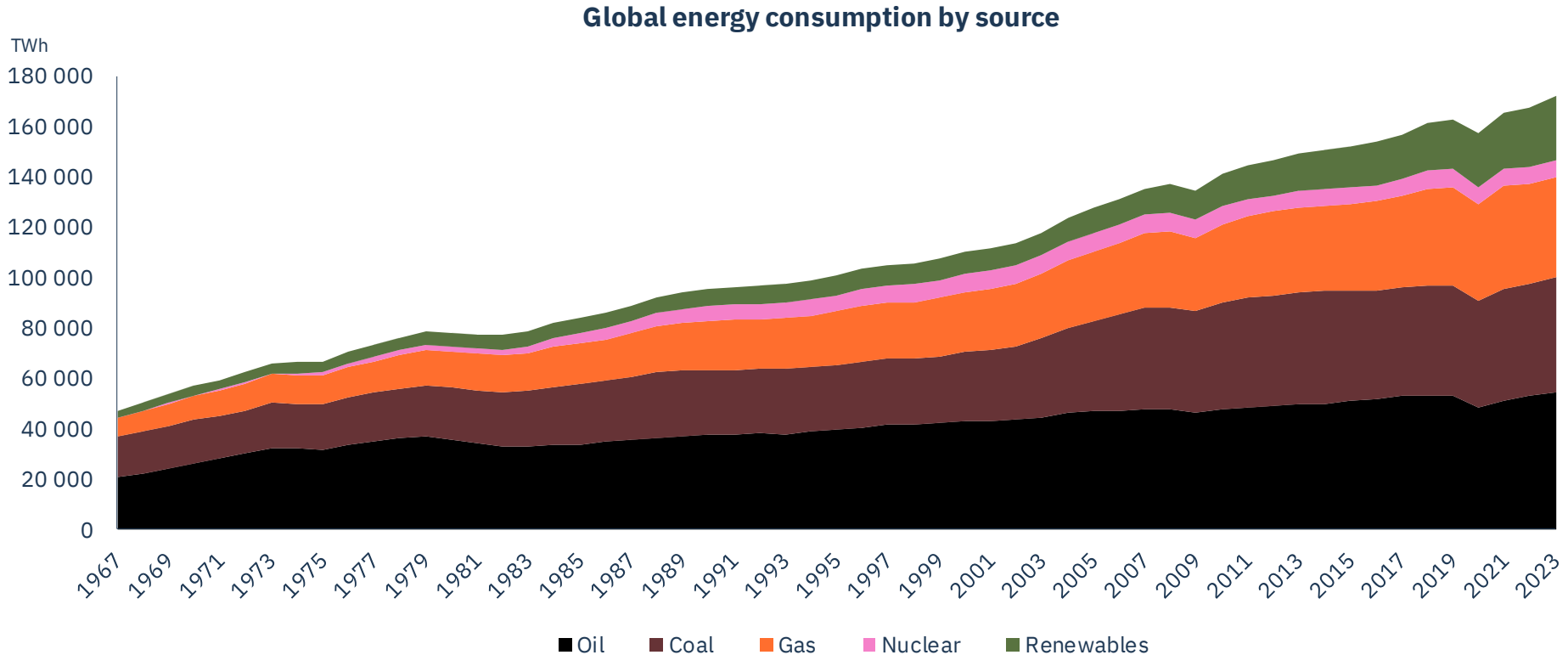


A bet on the green transition



The world is fossil fueled

Fossil energy has quadrupled last 50 years

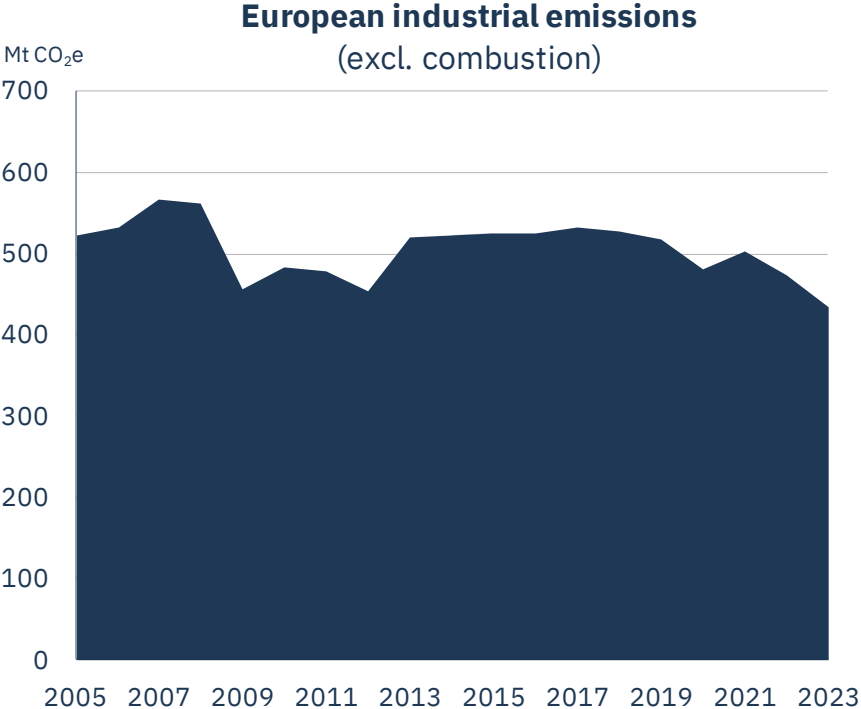


EU has high ambitions for climate & ecosystems

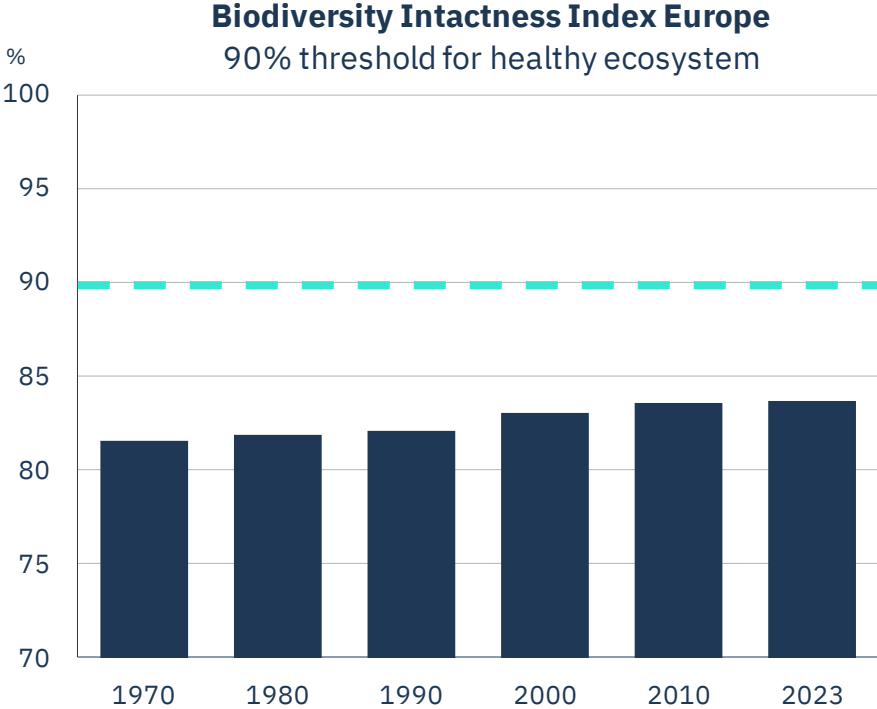


European industry has not decarbonised

Biodiversity is under pressure



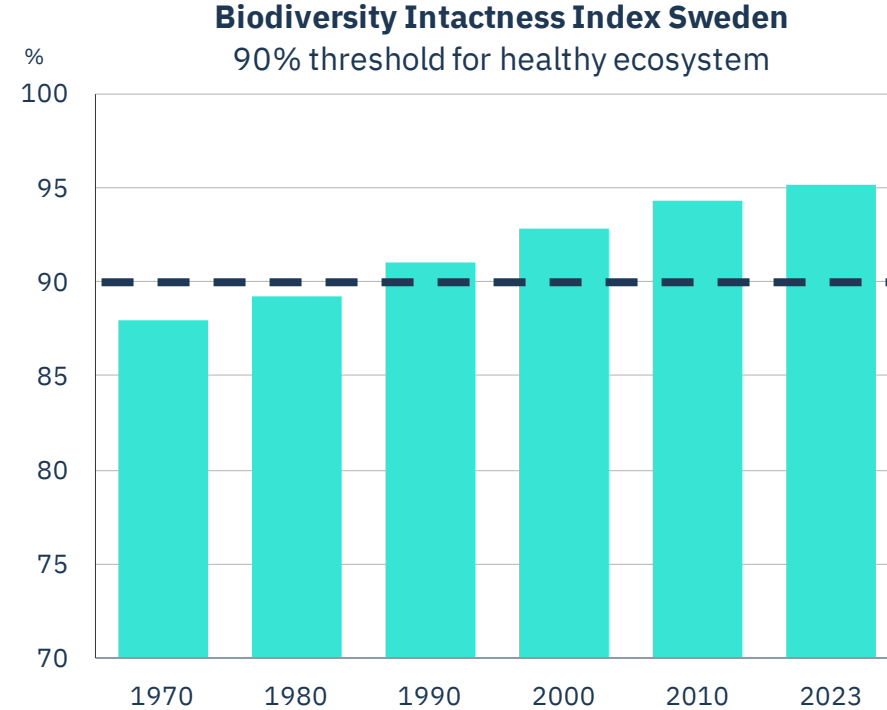
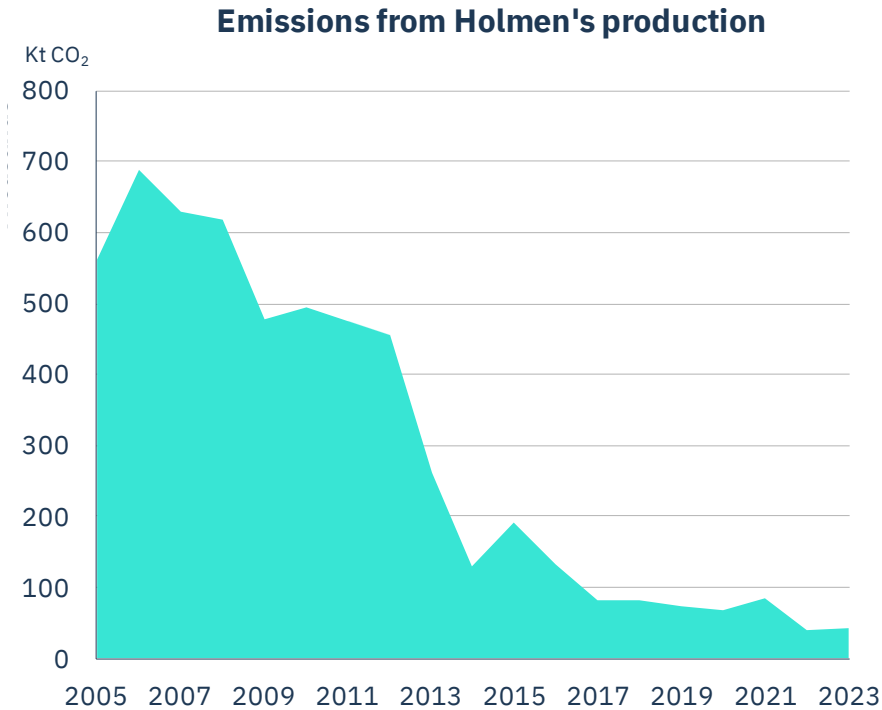
Source: European Environment Agency



Source: [Natural History Museum](#)

We have lowered our fossil emissions by 90%

Swedish ecosystems are in balance



Access to wood & fossil-free energy

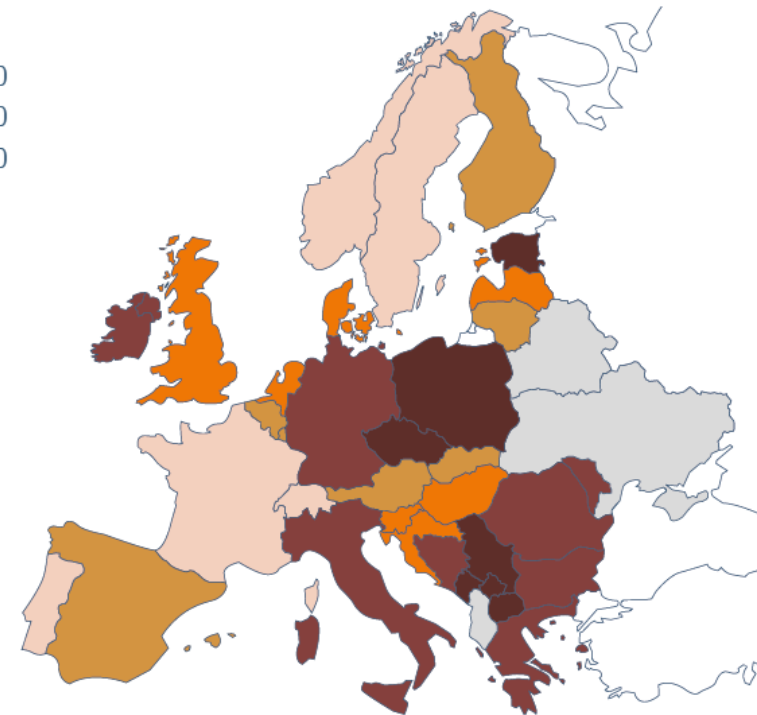
Forest assets*

- >65
- 51-65
- 31-50
- 11-30



Carbon intensity from electricity production**

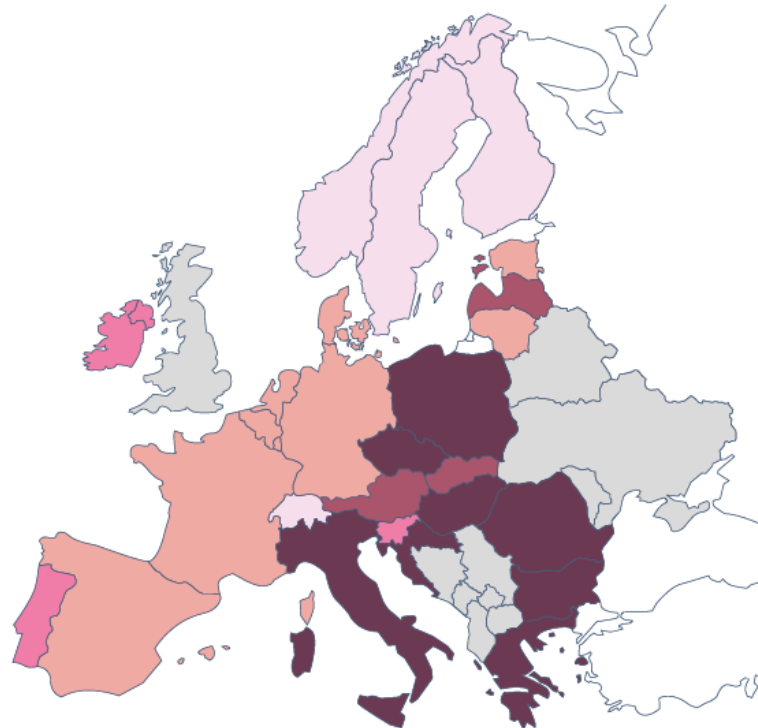
- <100
- 101-200
- 201-300
- 301-500
- >500
- No data



Clean air and plenty of water in the Nordics

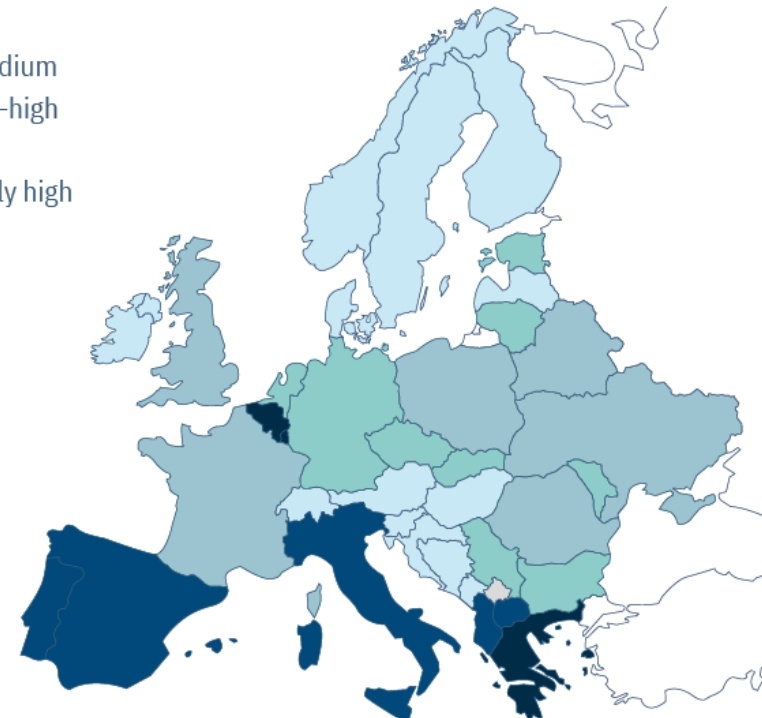
Air pollution*

- <8
- 8–9
- 10–11
- 12–14
- >14
- No data

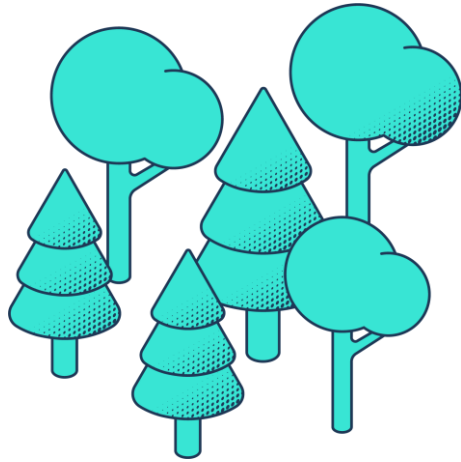


Water stress**

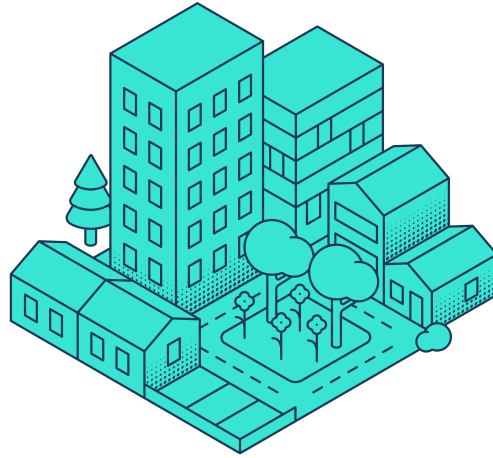
- Low
- Low–medium
- Medium–high
- High
- Extremely high
- No data



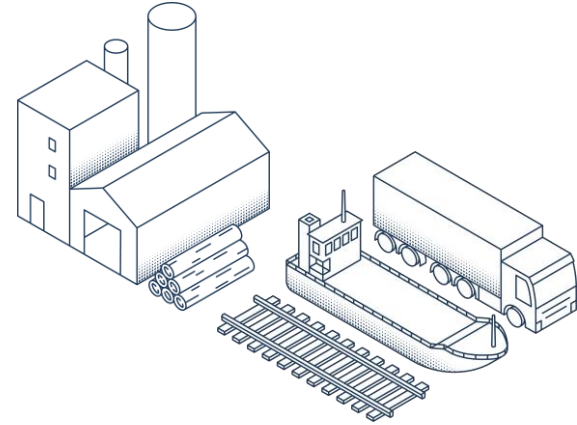
We're beyond net zero



1.6 Mt CO₂
Net increase in growing forest



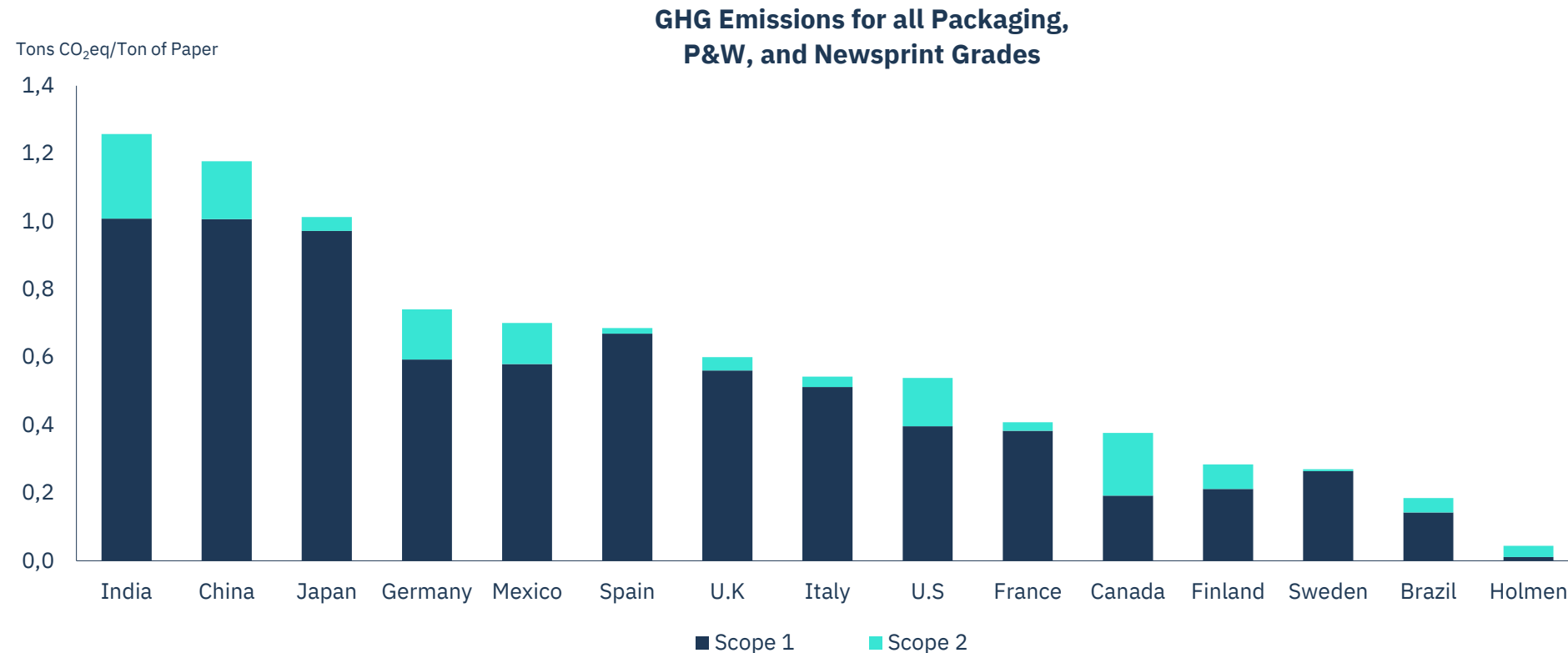
0.5 Mt CO₂
Net storage in buildings



-0.1 Mt CO₂e Scope 1+2
-0.6 Mt CO₂e Scope 3

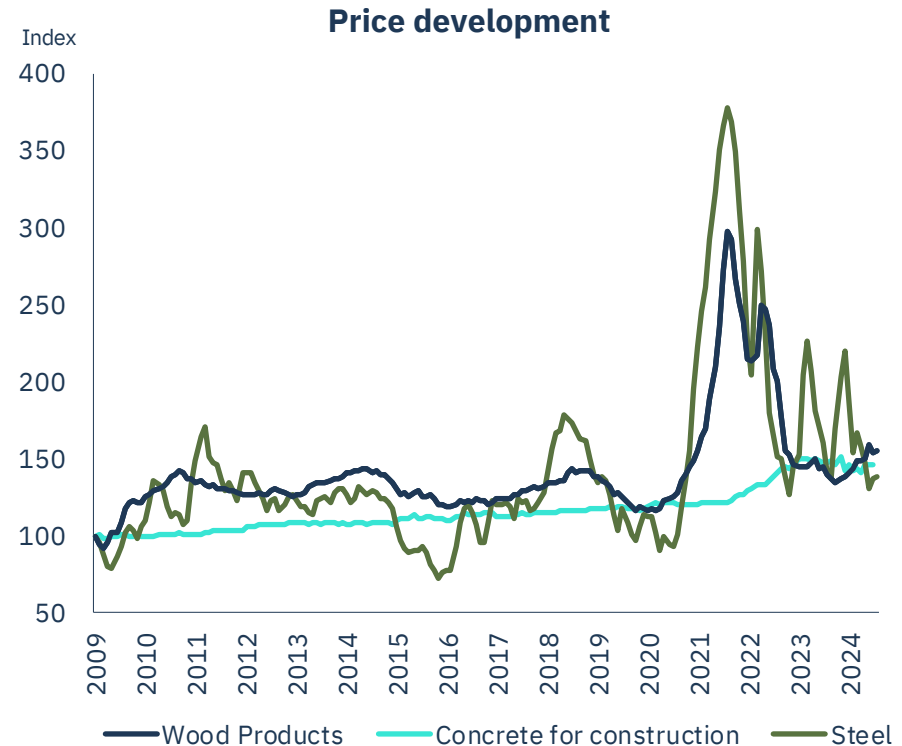
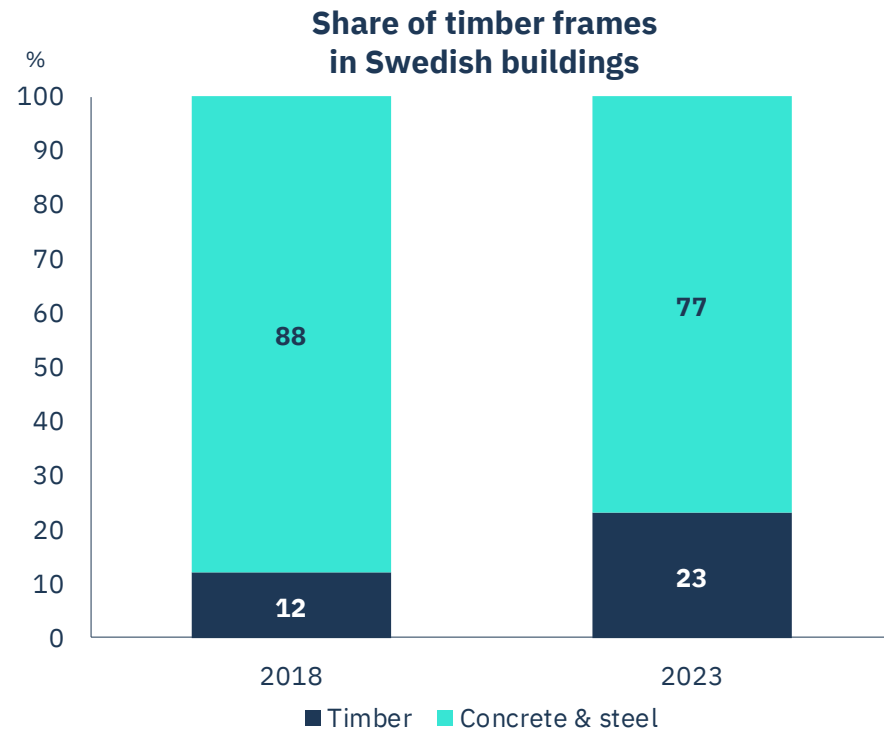
Helping our customers with their CO2 footprint

Consumer board, transport packaging, books & magazines

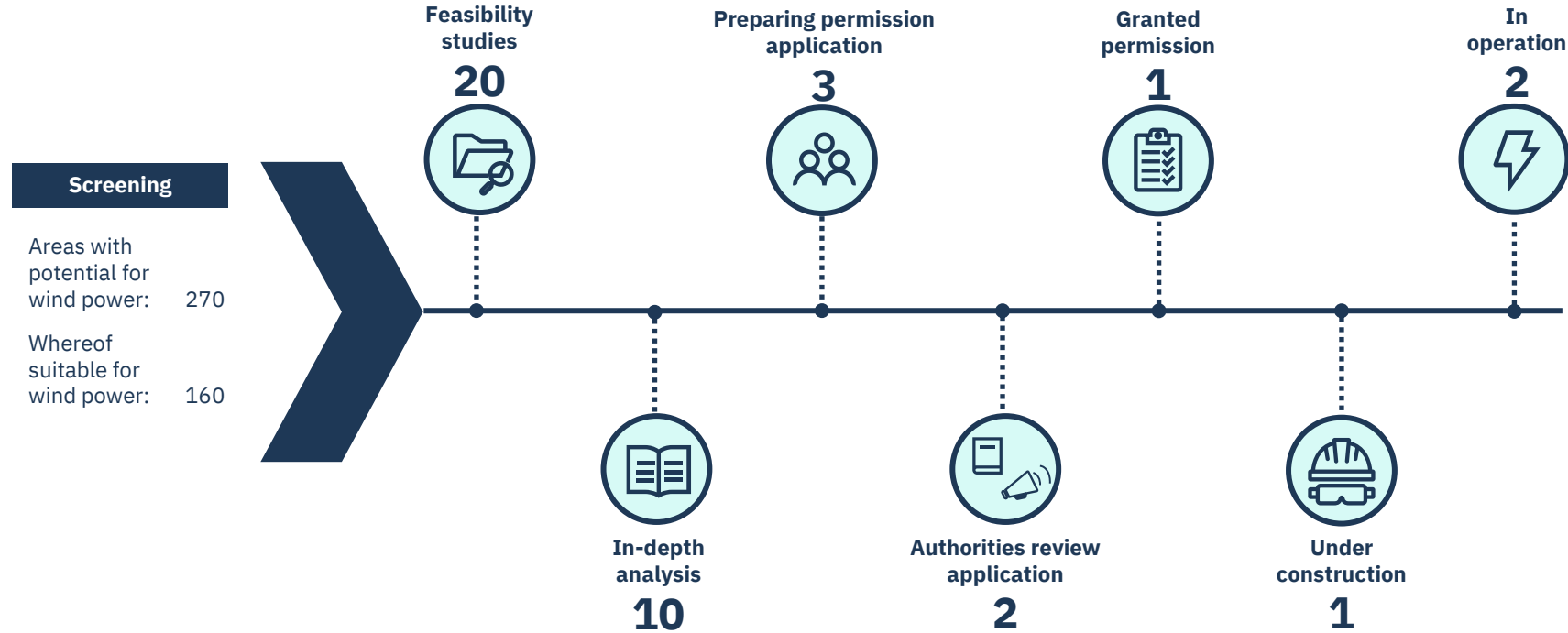


Offer a green alternative to concrete & steel

CBAM will push up the cost for building materials

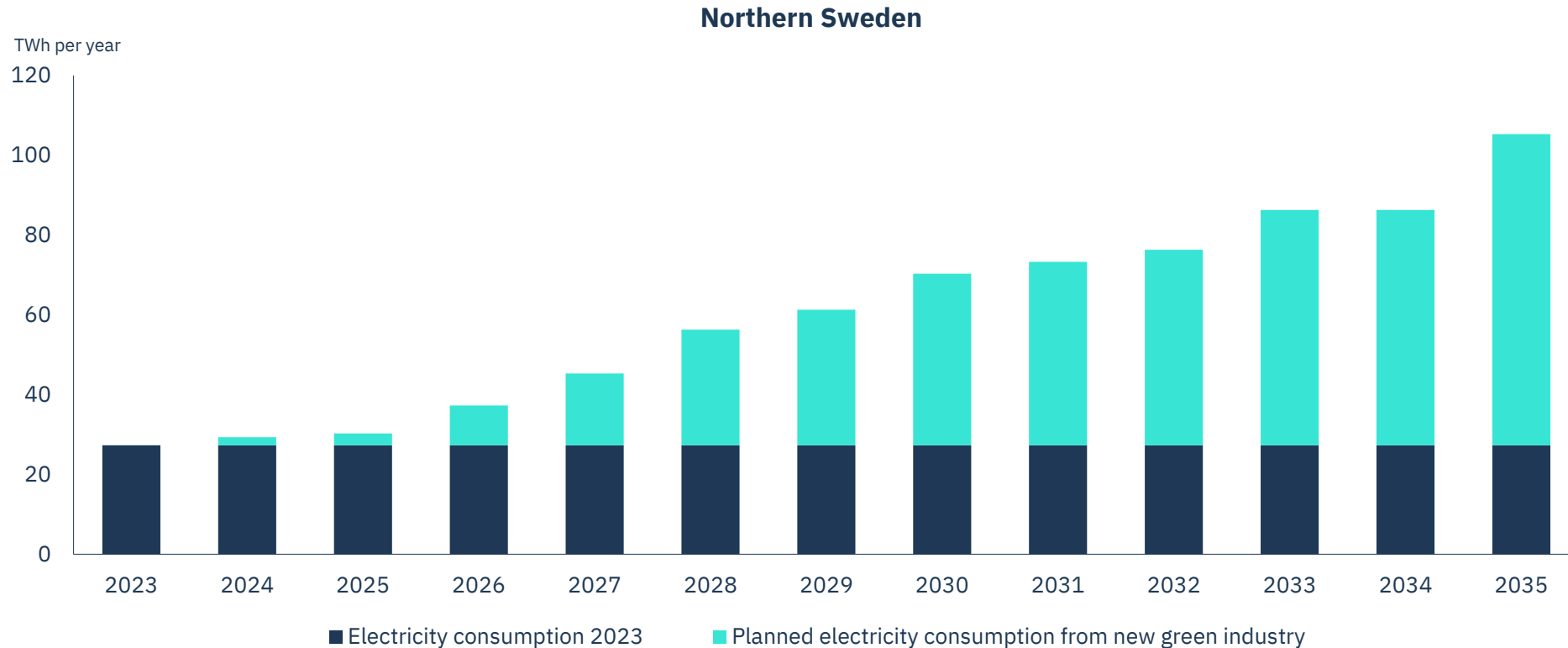


Developing a wind farm portfolio



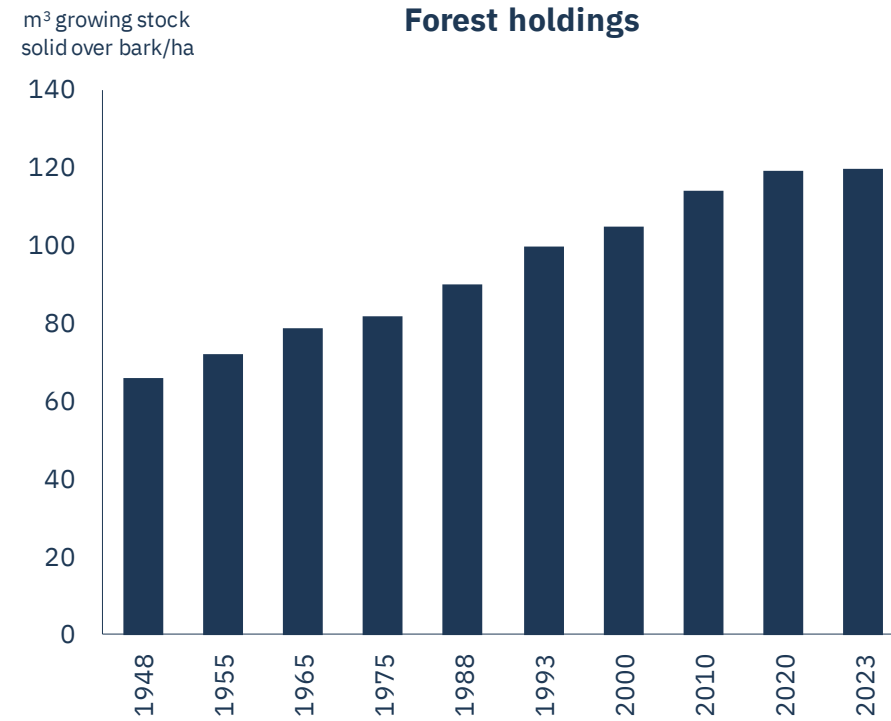
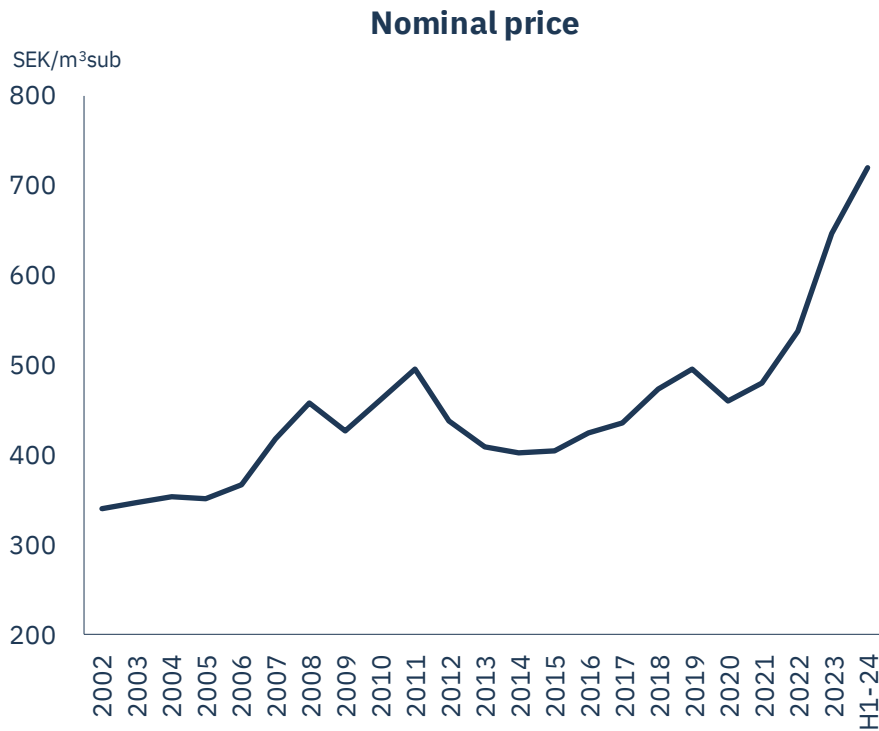
Supporting the emerging green industry

Blisterliden will grow our renewable production another 20%



Forests becoming more of a scarce resource

Supporting value and industrial operations



HOLMEN

holmen.com